

GENERAL INFORMATION**Service Reminder Indicators - General Motors (Except Cadillac)****OIL CHANGE REMINDERS**

NOTE: This article is only to be used for resetting maintenance reminder lights (when applicable). Some models (not all) may be equipped with one or more resetable maintenance reminder lights indicating maintenance is required. Once required maintenance services are performed, resetting of lights may be required. Information is provided to reset these lights where applicable.

NOTE: Most vehicles are equipped with a Malfunction Indicator Light (MIL) or check engine light. If light comes on and remains on while driving, the vehicle requires some type of repair. See appropriate service and repair information. After repairing fault(s) and clearing fault code(s), the MIL or check engine light should go out. Some models may use a dual-function indicator light, which is also used to indicate emission component service is due. After performing required service, reset indicator light.

NOTE: Most General Motors 1981-88 vehicles do not use a Service Reminder Indicator (SRI).

CHANGE ENGINE OIL LIGHT (PASSENGER CARS)**1989-92 OLDSMOBILE TORONADO & TROFEO****With Information Center Display**

1. OIL LIFE INDEX is one of 4 engine data displays used on models with Information Center display. It will display remaining oil life as estimated percentage of the useful life of oil. It will show 100 percent when the system is reset. After changing oil, reset oil life display.
2. To reset the display, press ENG DATA button (1989-90) or OPTIONS button (1991-92) until oil life index is displayed. Then, press and hold in ENG DATA and GAGE buttons (1989) or RESET/ENTER button (1990-92) for at least 5 seconds. This will reset remaining oil life to 100 percent.

With Visual Information Center

1. OIL LIFE is one of the displays used on models with a Visual Information Center (VIC). It will display data regarding previous oil change. A bar graph display shows full when oil is changed. Bar graph will go down as vehicle is driven and oil ages.

2002 Chevrolet Camaro

GENERAL INFORMATION Service Reminder Indicators - General Motors (Except Cadillac)

When bar graph reaches CHANGE OIL mark, oil should be changed. After changing oil, reset oil life display.

2. To reset the display, press INFO hard key and then OIL LIFE soft key to display oil life index. Press RESET soft key. A reset confirmation page will appear and ask if oil has been changed. Press YES soft key to reset bar graph, and update last oil change date and mileage information.

1990-91 CHEVROLET CORVETTE

1. Engine oil life monitor calculates engine oil temperature and RPM. It indicates when the oil is nearly worn out. A CHANGE OIL light on left side of instrument cluster is illuminated when it is time to change oil.
2. To reset oil life monitor, turn ignition on. Depress ENG MET button on trip monitor and release. Within 5 seconds, depress and release ENG MET button again. Within 5 seconds, depress and hold the RANGE button on trip monitor. The CHANGE OIL light should flash.
3. Hold the RANGE button depressed until the CHANGE OIL light stops flashing and goes out. When the light goes out, the engine oil life monitor is reset. This should take about 10 seconds. If the light does not reset, turn the ignition off and repeat the procedure.

1990-91 OLDSMOBILE CUTLASS CALAIS, CUTLASS SUPREME, CUTLASS CIERA, CUTLASS CRUISER, EIGHTY-EIGHT, NINETY-EIGHT & TOURING SEDAN

1. An oil change reminder displays estimated percentage of the remaining useful life of the oil. When vehicle is started, a tone will sound and approximate distance to next oil change will be displayed.
2. When remaining oil life is 10 percent or less, the system will calculate distance to next oil change. When the oil life is 0 percent, the display will show CHANGE OIL NOW. After changing oil, reset oil life display.
3. To reset the display, press and hold in OIL button to select the oil life display. Then, press and hold in RESET and OIL buttons for at least 5 seconds. This will reset oil life display to 100 percent.

1991-93 BUICK PARK AVENUE

1. CHANGE OIL SOON light will come on when engine oil has broken down enough to require changing. After changing oil, reset oil life display.
2. To reset light, locate reset button hole under passenger side of dash. Use a pencil or similar object to push and hold button (inside hole) for 5 seconds. The CHANGE OIL SOON light will flash 4 times to indicate light has been reset.

1992-96 CHEVROLET CORVETTE

1. The CHANGE OIL light, located on left side of instrument cluster is illuminated when

2002 Chevrolet Camaro

GENERAL INFORMATION Service Reminder Indicators - General Motors (Except Cadillac)

its time to change oil. When engine oil is changed, reset CHANGE OIL indicator even if indicator did not illuminate. This ensures indicator accuracy for next oil change.

2. To reset oil life monitor, turn ignition on. Ensure DLC terminal No. 12 is not grounded. Press ENG MET button, located on the trip monitor, and release. Within 5 seconds, press and release ENG MET button again. Within another 5 seconds, press and hold the GAUGES button located on the trip monitor.
3. CHANGE OIL light will begin flashing. Hold GAUGES button depressed until CHANGE OIL light goes out. When light goes out, engine oil life monitor is reset. This should take about 10 seconds. If light does not reset, turn ignition off and repeat procedure.

1992-93 OLDSMOBILE EIGHTY EIGHT & NINETY EIGHT

1. Oil change reminder display is similar to 1990-91 models, but reset procedures are different. After changing oil, reset oil life display.
2. To reset the display, press and release the TEST button. Press and release the OIL button. Press and hold the RESET button for at least 7 seconds. This will reset oil life display to 100 percent.

1994-99 BUICK LESABRE

1. CHANGE OIL SOON light will come on when engine oil has broken down enough to require changing. After changing oil, reset oil life display.
2. To reset light, turn ignition on. Open glove box to access oil reset button. Press and hold oil reset button in glove box for at least 5 seconds, but not longer than 60 seconds. The CHANGE OIL SOON light will flash 4 times to indicate light has been reset.

1994-96 BUICK PARK AVENUE

1. CHANGE OIL SOON light will come on when engine oil has broken down enough to require changing. After changing oil, reset oil life display.
2. To reset light, turn ignition on. Open glove box to access oil reset button. Press and hold oil reset button in glove box for at least 5 seconds, but not longer than 60 seconds. The CHANGE OIL SOON light will flash 4 times to indicate light has been reset.

1994 BUICK ROADMASTER

1. Engine oil life monitor calculates engine oil temperature and RPM. It indicates when the engine oil is nearly worn out. A CHANGE OIL light on the instrument cluster is illuminated when it is time to change the engine oil.
2. To reset CHANGE OIL light, press reset switch located behind fuse block access door.

1994 CHEVROLET CAPRICE

1. Engine oil life monitor calculates engine oil temperature and RPM. It indicates when

2002 Chevrolet Camaro

GENERAL INFORMATION Service Reminder Indicators - General Motors (Except Cadillac)

the engine oil is nearly worn out. A CHANGE OIL light on the instrument cluster is illuminated when it is time to change the engine oil.

2. To reset CHANGE OIL light, press reset switch located behind fuse block access door.

1995-96 BUICK ROADMASTER

1. Engine oil life monitor calculates engine oil temperature and RPM. It indicates when the engine oil is nearly worn out. A CHANGE OIL light on the instrument cluster is illuminated when it is time to change the engine oil.
2. To reset oil life monitor and turn off CHANGE OIL light, turn ignition switch to ON position with engine off. Depress accelerator pedal to wide open throttle 3 times within 5 seconds. This throttle signal will inform the PCM to reset the oil life monitor and turn off the light. If light does not turn off, turn ignition off and repeat procedure.

1995-96 CHEVROLET CAPRICE

1. Engine oil life monitor calculates engine oil temperature and RPM. It indicates when the engine oil is nearly worn out. A CHANGE OIL light on the instrument cluster is illuminated when it is time to change the engine oil.
2. To reset oil life monitor and turn off CHANGE OIL light, turn ignition switch to ON position with engine off. Depress accelerator pedal to wide open throttle 3 times within 5 seconds. This throttle signal will inform the PCM to reset the oil life monitor and turn off the light. If light does not turn off, turn ignition off and repeat procedure.

1995-99 OLDSMOBILE AURORA

1. The Driver Information Center (DIC) displays estimated percentage of the remaining useful life of engine oil or transaxle fluid. When remaining oil or fluid life is 0 percent, the display will show CHANGE OIL NOW or CHANGE TRNS FLUID NOW. After changing engine oil or transaxle fluid, reset oil life display.
2. To reset the display, turn ignition on with engine off. Press ENG button to select the OIL LIFE or TRNS FLUID LIFE percentage display. Then, press and hold in RESET for at least 5 seconds.
3. The word RESET will appear. Then, OIL LIFE 100 or TRNS FLUID 100 will be displayed.

1995-97 OLDSMOBILE EIGHTY EIGHT & NINETY EIGHT

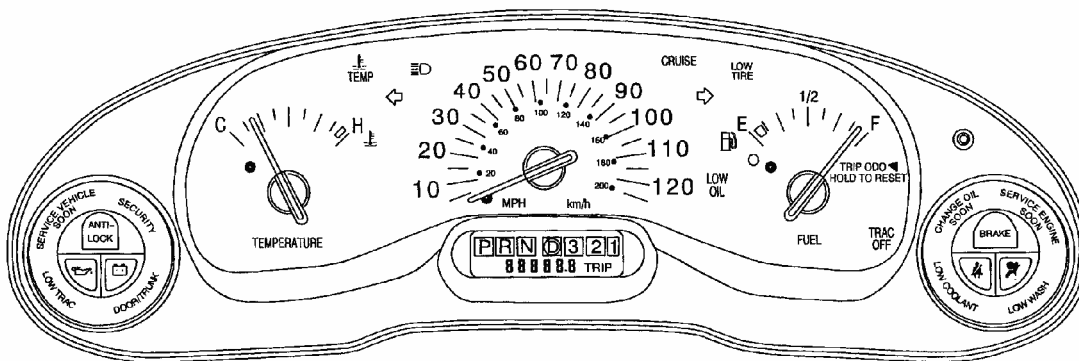
1. Oil change reminder display is similar to 1990-91 models, but reset procedures are different. After changing oil, reset oil life display.
2. To reset the display, press and release RESET button on Driver Information Center (DIC). Press SEL button (with down arrow) to select OIL. Press SEL button (with left and right arrows) to display oil life. Press and hold RESET button for about 5 seconds. A reset message will display, then oil life will display 100 percent.

2002 Chevrolet Camaro

GENERAL INFORMATION Service Reminder Indicators - General Motors (Except Cadillac)

1997-2004 BUICK CENTURY & REGAL

1. Engine oil life monitor calculates engine oil temperature and engine revolutions. It indicates when the engine oil is nearly worn out. CHANGE OIL or CHANGE OIL SOON light on the instrument cluster is illuminated when it is time to change the engine oil. See **Fig. 1** and **Fig. 2**.
2. To reset oil life monitor on a vehicle with a Driver Information Center, go to step 4. To reset the oil life monitor on a vehicle NOT equipped with a Driver Information Center, turn ignition switch to ON or RUN position with engine off. Depress accelerator pedal slowly to wide open throttle 3 times within 5 seconds.
3. On 1997-98 vehicles, if the CHANGE OIL or CHANGE OIL SOON light flashes 2 times, the system is reset. However, if light comes on for 5 seconds, system did not reset. Repeat reset procedure. On 1999-2004 vehicles, if the CHANGE OIL or CHANGE OIL SOON light flashes, the system is resetting. Turn ignition off. Start vehicle. If oil light comes back on and stays on, the oil life monitor has not reset. Repeat reset procedure.
4. If vehicle is equipped with a Driver Information Center (DIC), reset oil life monitor by pressing the Driver Information Center RESET button for 5 seconds while viewing the oil life display.

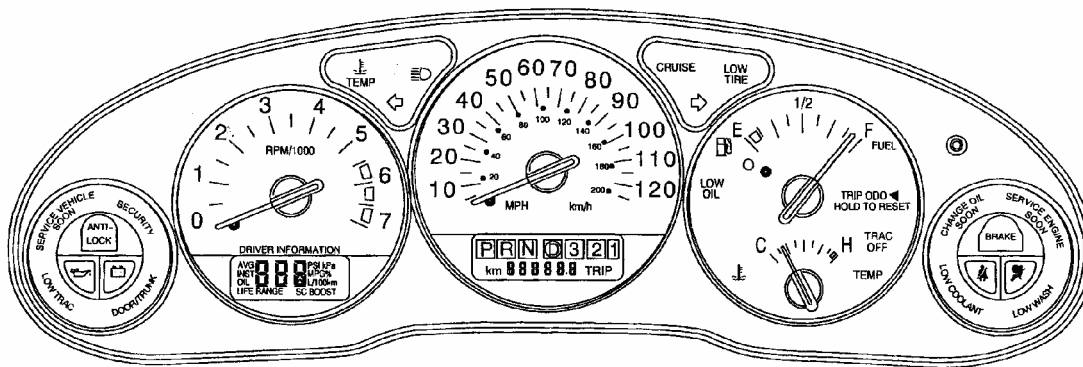


G00032224

Fig. 1: Identifying Instrument Cluster (2002-04 Buick Century)
Courtesy of GENERAL MOTORS CORP.

2002 Chevrolet Camaro

GENERAL INFORMATION Service Reminder Indicators - General Motors (Except Cadillac)

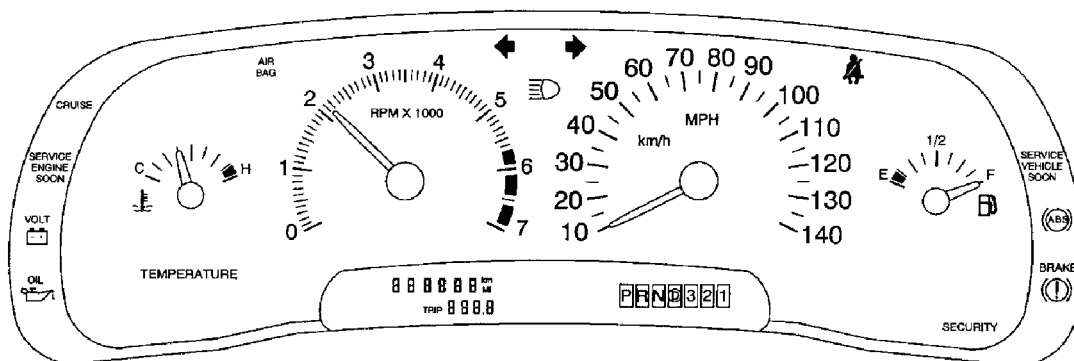


G00032225

Fig. 2: Identifying Instrument Cluster (2002-04 Buick Regal)
Courtesy of GENERAL MOTORS CORP.

1997-2004 BUICK PARK AVENUE

1. To display this light, press the GAGE INFO or GAGES button on the Driver Information Center (DIC). To identify oil maintenance light, see **Fig. 3** and **Fig. 4**. When oil life index is less than 10 percent, display will show OIL LIFE INDEX CHANGE OIL. After changing oil, reset system.
2. To reset light, display OIL LIFE INDEX. Hold RESET button for more than 5 seconds. After reset, oil life will change to 100 percent.

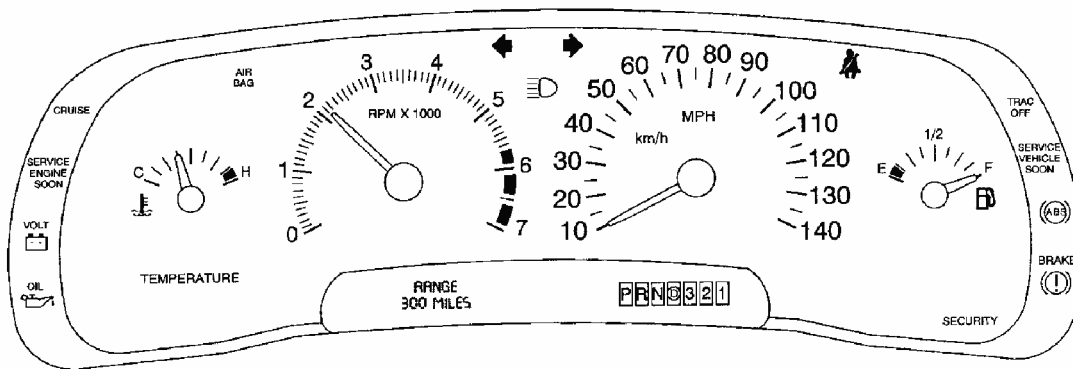


G00275752

Fig. 3: Identifying Base Instrument Cluster
Courtesy of GENERAL MOTORS CORP.

2002 Chevrolet Camaro

GENERAL INFORMATION Service Reminder Indicators - General Motors (Except Cadillac)



G00275753

Fig. 4: Identifying Instrument Cluster With Driver Information Center
Courtesy of GENERAL MOTORS CORP.

1997-2000 CHEVROLET CORVETTE

1. The CHANGE OIL light is illuminated when its time to change engine oil, usually between 3000 and 10,000 miles since last oil change. The Driver Information Center (DIC) will display CHANGE OIL NOW when an oil change is due.
2. To reset oil life monitor, turn ignition switch to RUN position, with engine off. Press TRIP button, located on DIC switch to display OIL LIFE. Message will display percentage of oil life remaining.
3. Press and hold RESET button on DIC for at least 2 seconds. Word RESET will appear, then OIL LIFE 99. Turn ignition off.

1997-2001 CHEVROLET LUMINA

1. Engine oil life monitor calculates engine oil temperature and engine revolutions. It indicates when the engine oil is nearly worn out. CHANGE OIL or CHANGE OIL SOON light on the instrument cluster is illuminated when it is time to change the engine oil.
2. To reset oil life monitor on a vehicle with a Driver Information Center, go to step 4. To reset the oil life monitor on a vehicle NOT equipped with a Driver Information Center, turn ignition switch to ON or RUN position with engine off. Depress accelerator pedal slowly to wide open throttle 3 times within 5 seconds.
3. On 1997-98 vehicles, if the CHANGE OIL or CHANGE OIL SOON light flashes 2 times, the system is reset. However, if light comes on for 5 seconds, system did not reset. Repeat reset procedure. On 1999-2001 vehicles, if the CHANGE OIL or CHANGE OIL SOON light flashes, the system is resetting. Turn ignition off. Start vehicle. If oil light comes back on and stays on, the oil life monitor has not reset. Repeat reset procedure.
4. If vehicle is equipped with a Driver Information Center (DIC), reset oil life monitor by

2002 Chevrolet Camaro

GENERAL INFORMATION Service Reminder Indicators - General Motors (Except Cadillac)

pressing the Driver Information Center RESET button for 5 seconds while viewing the oil life display.

1997-1999 CHEVROLET MONTE CARLO

1. Engine oil life monitor calculates engine oil temperature and engine revolutions. It indicates when the engine oil is nearly worn out. CHANGE OIL or CHANGE OIL SOON light on the instrument cluster is illuminated when it is time to change the engine oil.
2. To reset oil life monitor on a vehicle with a Driver Information Center, go to step 4. To reset the oil life monitor on a vehicle NOT equipped with a Driver Information Center, turn ignition switch to ON or RUN position with engine off. Depress accelerator pedal slowly to wide open throttle 3 times within 5 seconds.
3. On 1997 vehicles, if the CHANGE OIL or CHANGE OIL SOON light flashes 2 times, the system is reset. However, if light comes on for 5 seconds, system did not reset. Repeat reset procedure. On 1999 vehicles, if the CHANGE OIL or CHANGE OIL SOON light flashes, the system is resetting. Turn ignition off. Start vehicle. If oil light comes back on and stays on, the oil life monitor has not reset. Repeat reset procedure.
4. If vehicle is equipped with a Driver Information Center (DIC), reset oil life monitor by pressing the Driver Information Center RESET button for 5 seconds while viewing the oil life display.

1997-2003 PONTIAC GRAND PRIX

1. Engine oil life monitor calculates engine oil temperature and engine revolutions. It indicates when the engine oil is nearly worn out. CHANGE OIL SOON or OIL LIFE light is illuminated when it is time to change the engine oil.
2. To reset the oil life monitor on a vehicle equipped with a Driver Information Center, turn ignition switch to RUN position with engine off. Depress accelerator pedal slowly to wide open throttle 3 times within 5 seconds. If the CHANGE OIL SOON light flashes, the system is resetting. Turn ignition off. Start vehicle. If CHANGE OIL SOON light comes back on and stays on, the oil life monitor has not reset. Repeat procedure.
3. To reset the oil life monitor on a vehicle equipped with a Trip Computer, press the MODE button until the light appears lit next to OIL LIFE. Press and hold the RESET button for 3 seconds. Oil life percentage should change to 100 percent.

1998-2002 CHEVROLET CAMARO

1. The CHANGE OIL (or CHANGE ENGINE OIL) message is displayed when its time to change engine oil, usually between 3000 and 7500 miles since last oil change.
2. To reset the oil life monitor, turn the ignition switch to RUN position, with engine off. Press the TRIP/OIL RESET button on the instrument panel for 12 seconds. The OIL CHANGE light will start to flash to confirm that system is reset. Reset is complete

2002 Chevrolet Camaro

GENERAL INFORMATION Service Reminder Indicators - General Motors (Except Cadillac)

when OIL CHANGE light goes out.

1998-2002 OLDSMOBILE INTRIGUE

1. Engine oil life monitor calculates engine oil temperature and engine revolutions. It indicates when the engine oil is nearly worn out. CHANGE OIL or CHANGE OIL SOON light on the instrument cluster is illuminated when it is time to change the engine oil.
2. To reset oil life monitor on a vehicle with a Driver Information Center, go to step 4. To reset the oil life monitor on a vehicle NOT equipped with a Driver Information Center, turn ignition switch to ON or RUN position with engine off. Depress accelerator pedal slowly to wide open throttle 3 times within 5 seconds.
3. If the CHANGE OIL or CHANGE OIL SOON light flashes, the system is resetting. Turn ignition off. Start vehicle. If oil light comes back on and stays on, the oil life monitor has not reset. Repeat reset procedure.
4. If vehicle is equipped with a Driver Information Center (DIC), reset oil life monitor by pressing the Driver Information Center RESET button for 5 seconds while viewing the oil life display.

1998-2002 PONTIAC FIREBIRD

1. The CHANGE OIL (or CHANGE ENGINE OIL) message is displayed when its time to change engine oil, usually between 3000 and 7500 miles since last oil change.
2. To reset the oil life monitor, turn the ignition switch to RUN position, with engine off. Press the TRIP/OIL RESET button on the instrument panel for 12 seconds. The OIL CHANGE light will start to flash to confirm that system is reset. Reset is complete when OIL CHANGE light goes out.

1999-2003 OLDSMOBILE ALERO

1. The CHANGE OIL (or CHANGE ENGINE OIL) message is displayed when its time to change engine oil, usually between 3000 and 7500 miles since last oil change.
2. To reset the engine oil life monitor, turn ignition on with engine off. Press and release the RESET button. RESET button is located inside of driver's side instrument panel fuse block/panel (left end of instrument panel). The CHANGE OIL/CHANGE ENGINE OIL light will begin to flash. Press and hold the RESET button again. Reset procedure is complete when chimes sound and light goes out.

1999-2003 PONTIAC GRAND AM

1. The CHANGE OIL (or CHANGE ENGINE OIL) message is displayed when its time to change engine oil, usually between 3000 and 7500 miles since last oil change.
2. To reset the engine oil life monitor, turn ignition on with engine off. Press and release the RESET button. RESET button is located inside of driver's side instrument panel

2002 Chevrolet Camaro

GENERAL INFORMATION Service Reminder Indicators - General Motors (Except Cadillac)

fuse block/panel (left end of instrument panel). The CHANGE OIL/CHANGE ENGINE OIL light will begin to flash. Press and hold the RESET button again. Reset procedure is complete when chimes sound and light goes out.

2000-2004 BUICK LESABRE

1. To display this light, press the GAGE INFO or GAGES button on the Driver Information Center (DIC). To identify oil maintenance light, see **Fig. 5** and **Fig. 6**. When oil life index is less than 10 percent, display will show OIL LIFE INDEX CHANGE OIL. After changing oil, reset system.
2. To reset light, display OIL LIFE INDEX. Hold RESET button for more than 5 seconds. After reset, oil life will change to 100 percent.

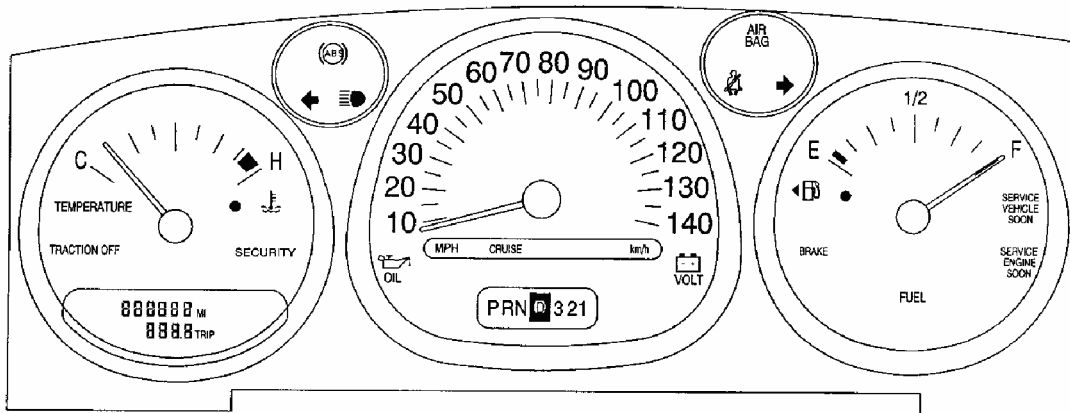


Fig. 5: Identifying Standard Instrument Cluster
Courtesy of GENERAL MOTORS CORP.

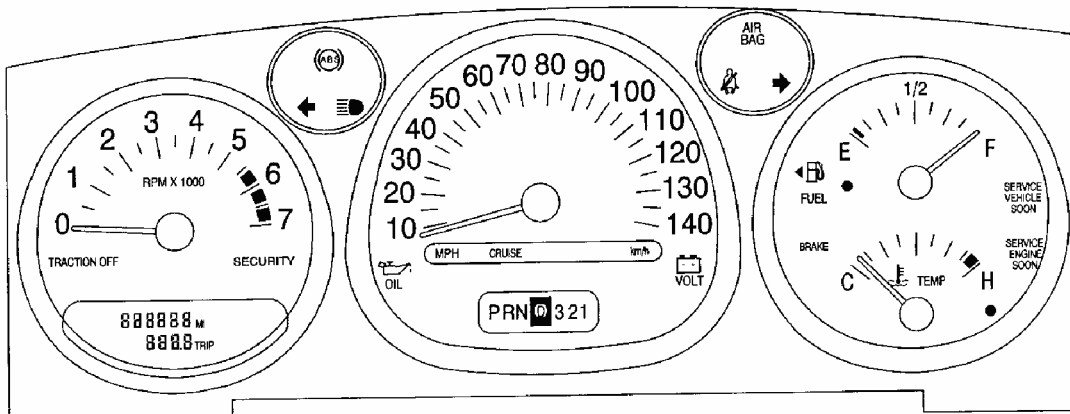


Fig. 6: Identifying Instrument Cluster With Tachometer
Courtesy of GENERAL MOTORS CORP.

2002 Chevrolet Camaro

GENERAL INFORMATION Service Reminder Indicators - General Motors (Except Cadillac)

2000-01 CHEVROLET IMPALA & MONTE CARLO

1. The CHANGE ENGINE OIL message is displayed when its time to change engine oil, usually between 3000 and 7500 miles since last oil change. The oil change interval is not based on mileage, but on engine revolutions and engine operating temperature.
2. There are 2 ways to reset the engine oil life monitor. To reset the engine oil life monitor using the accelerator pedal, go to step 5. To reset the engine oil life monitor using the radio, turn the radio off. Turn ignition to ACC or ON, with the engine off. Press and hold the DISP button on the radio for at least 5 seconds until SETTINGS is displayed.
3. Press the SEEK up or down arrow to scroll through the main menu. Scroll until OIL LIFE appears on the display. Press the PREV or NEXT button to enter the sub-menu. RESET will be displayed.
4. Press the DISP button to reset. A chime will sound to verify the new setting and DONE will be displayed for one second. Once the message indicator has been reset, scroll through the menu until EXIT appears on the display. Press the DISP button to exit the program. A chime will sound to verify the exit.
5. To reset the engine oil life monitor using the accelerator pedal, turn ignition on with engine off. Fully depress and release the accelerator pedal slowly 3 times within 5 seconds. If CHANGE ENGINE OIL light flashes, oil life monitor is reset. If the CHANGE ENGINE OIL light comes back on and stays on, oil life monitor has not reset. Repeat reset procedure.

2000-03 PONTIAC BONNEVILLE

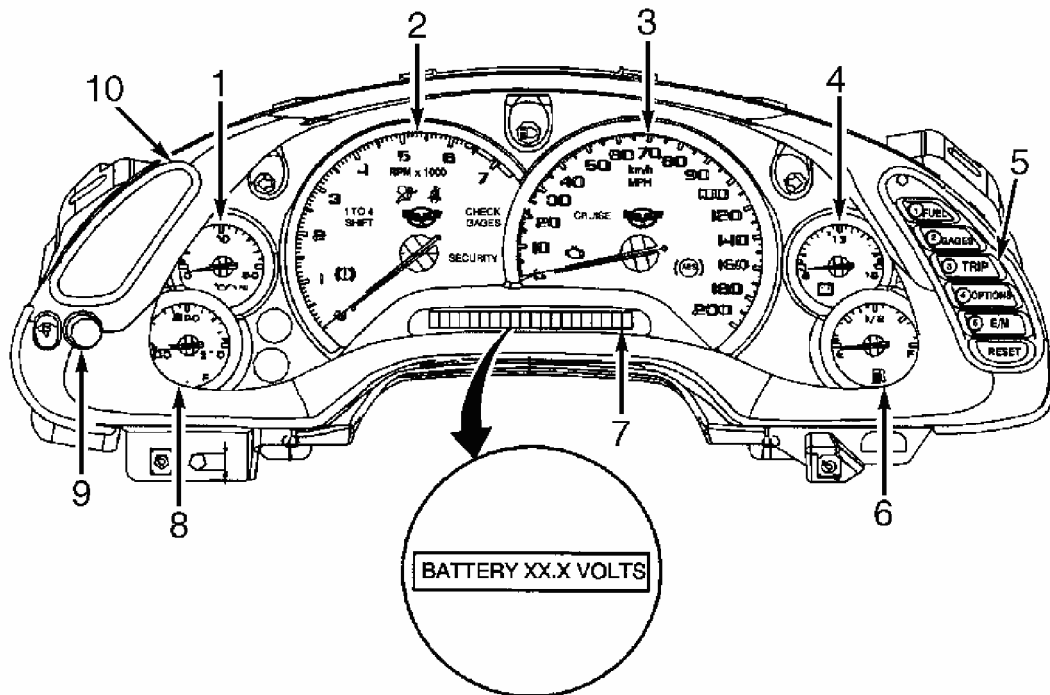
1. Press the SELECT button on the Driver Information Panel until OIL LIFE INDEX function displays. When oil life index is less than 10 percent, the display will show ENGINE OIL CHANGE SOON.
2. To reset the oil life monitor, display OIL LIFE INDEX function. Press and hold the RESET button for more than 5 seconds while OIL LIFE INDEX is displayed. Oil life monitor is reset when oil life index changes to 100 percent.

2001-04 CHEVROLET CORVETTE

1. The CHANGE OIL SOON light is illuminated when its time to change engine oil, usually between 3000 and 10,000 miles since last oil change. See **Fig. 7**. The Driver Information Center (DIC) will display CHANGE OIL NOW when an oil change is due.
2. To reset oil life monitor, turn ignition switch to ON or RUN position, with engine off. Press TRIP button, located on DIC switch to display OIL LIFE. Message will display percentage of oil life remaining.
3. Press and hold RESET button on DIC for at least 2 seconds. OIL LIFE REMAIN 100 percent will appear. Turn ignition off.

2002 Chevrolet Camaro

GENERAL INFORMATION Service Reminder Indicators - General Motors (Except Cadillac)



- | | |
|--|--------------------------------------|
| 1. Oil Pressure Gauge | 6. Fuel Gauge |
| 2. Tachometer | 7. Driver's Information Center (DIC) |
| 3. Speedometer | 8. Coolant Temperature Gauge |
| 4. Battery Voltage Gauge | 9. Dimmer Knob |
| 5. Driver's Information Center (DIC) Buttons | 10. Heads-Up Display (HUD) Controls |

G99J03932

Fig. 7: Identifying Instrument Cluster (2002-04 Chevrolet Corvette)
Courtesy of GENERAL MOTORS CORP.

2001-03 OLDSMOBILE AURORA

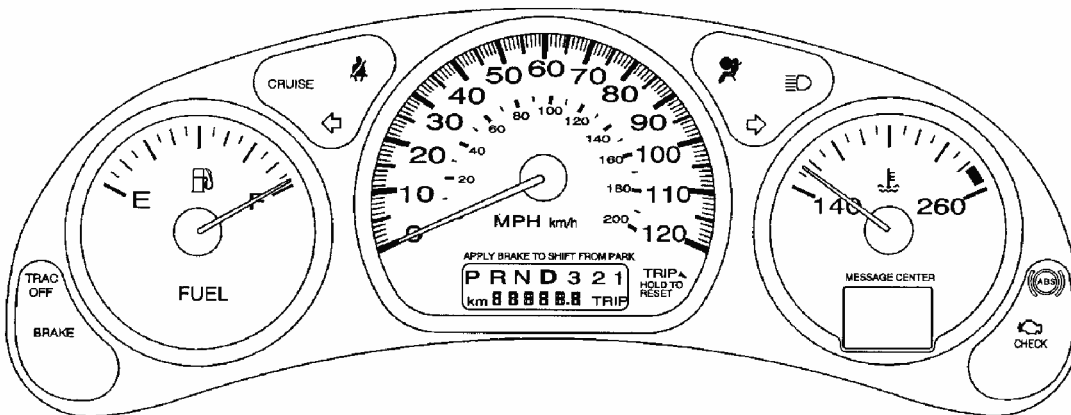
1. The Driver Information Center (DIC) displays estimated percentage of the remaining useful life of engine oil. When remaining oil life is close to 0 percent remaining, the display will show CHANGE OIL NOW or CHANGE OIL SOON. After changing oil, reset oil life percentage display.
2. To reset the display, turn ignition on with engine off. Press Driver Information Center (DIC) SELECT right arrow button to select OIL LIFE percentage display. Then, press and hold DIC RESET button for at least 5 seconds. When DIC RESET button is released, OIL LIFE 100 percent will be displayed.

2002-04 CHEVROLET IMPALA & MONTE CARLO

1. The CHANGE ENGINE OIL message is displayed when its time to change engine oil,

usually between 3000 and 7500 miles since last oil change. The oil change interval is not based on mileage, but on engine revolutions and engine operating temperature. See **Fig. 8-Fig. 11** .

2. There are 2 ways to reset the engine oil life monitor. To reset the engine oil life monitor using the accelerator pedal, go to step 5. To reset the engine oil life monitor using the radio, turn the radio off. Turn ignition to ACC or ON, with the engine off. Press and hold the TUNE DISP button on the radio for at least 5 seconds until SETTINGS is displayed.
3. On Impala, press the SEEK PTYPE up or down arrow to scroll through the main menu. On Monte Carlo, press the SEEK PSCAN up or down arrow to scroll through the main menu. On all models, scroll until OIL LIFE appears on the display. Press the 1 PREV or 2 NEXT button to enter the sub-menu. RESET will be displayed.
4. Press the TUNE DISP button to reset. A chime will sound to verify the new setting and DONE will be displayed for one second. Once the message indicator has been reset, scroll through the menu until EXIT appears on the display. Press the TUNE DISP button to exit the program. A chime will sound to verify the exit.
5. To reset the engine oil life monitor using the accelerator pedal, turn ignition on with engine off. Fully depress and release the accelerator pedal slowly 3 times within 5 seconds. If CHANGE ENGINE OIL light flashes, oil life monitor is reset. If the CHANGE ENGINE OIL light comes back on and stays on, oil life monitor has not reset. Repeat reset procedure.

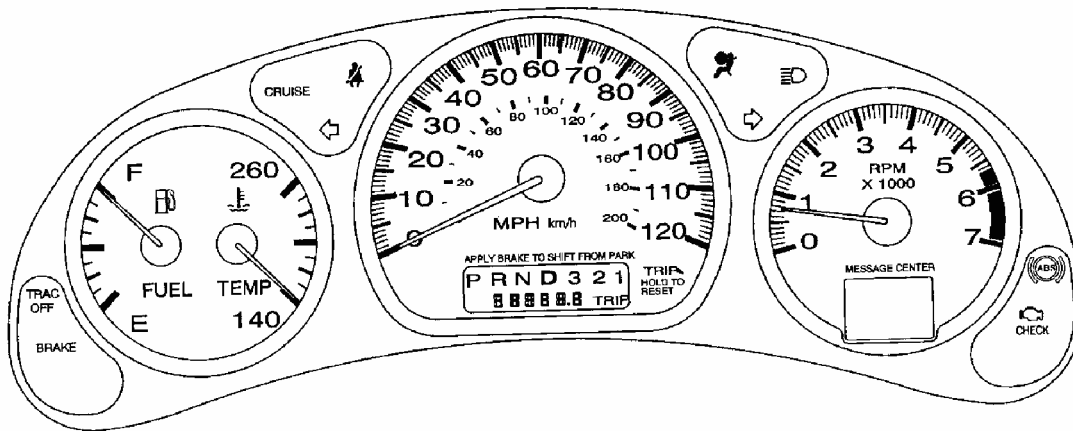


G00275763

Fig. 8: Identifying Instrument Cluster (2004 Chevrolet Impala & Monte Carlo V6)
Courtesy of GENERAL MOTORS CORP.

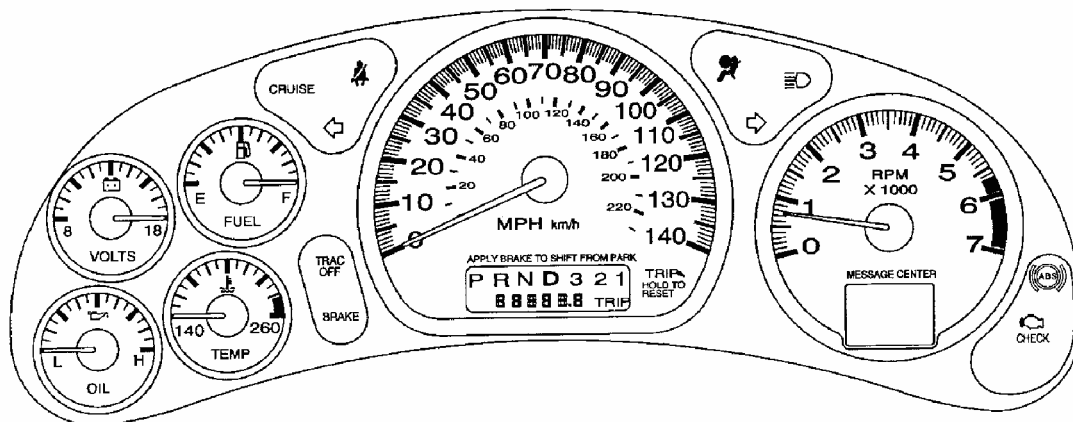
2002 Chevrolet Camaro

GENERAL INFORMATION Service Reminder Indicators - General Motors (Except Cadillac)



G00275764

Fig. 9: Identifying Instrument Cluster (2004 Chevrolet Impala V6)
Courtesy of GENERAL MOTORS CORP.

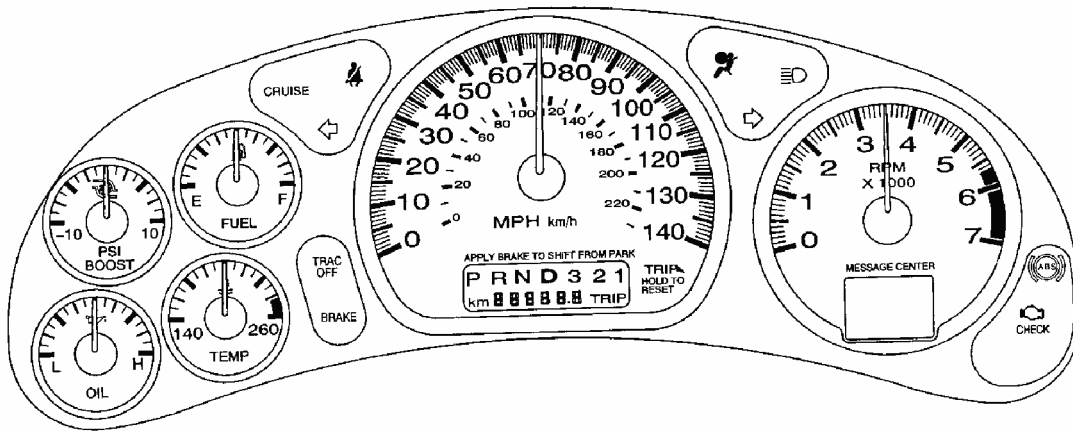


G00275766

Fig. 10: Identifying Instrument Cluster (2004 Monte Carlo V6)
Courtesy of GENERAL MOTORS CORP.

2002 Chevrolet Camaro

GENERAL INFORMATION Service Reminder Indicators - General Motors (Except Cadillac)



G00275765

Fig. 11: Identifying Instrument Cluster (2004 Chevrolet Impala & Monte Carlo Supercharged V6)
Courtesy of GENERAL MOTORS CORP.

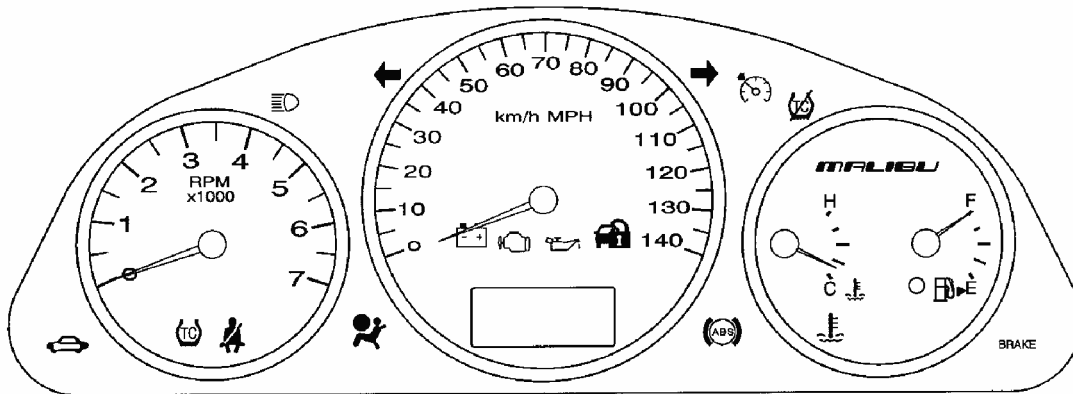
2004 CHEVROLET MALIBU

GM Oil Life System calculates when to change your engine oil and filter based on vehicle use. See **Fig. 12**. Anytime your oil is changed, reset the system so it can calculate when the next oil change is required. If a situation occurs where you change your oil prior to a Change Oil Soon message being turned on, reset the system. After changing the engine oil, reset the system.

1. Display OIL LIFE RESET on the DIC.
2. Press and hold ENTER button for at least one second. An ACKNOWLEDGED display message will appear for 3 seconds or until the next button is pressed. This will tell you the system has been reset.
3. Turn key to OFF.
4. If Change Oil Soon message comes back on when you start your vehicle, engine oil life system has not reset. Repeat the procedure.

2002 Chevrolet Camaro

GENERAL INFORMATION Service Reminder Indicators - General Motors (Except Cadillac)



G00275767

Fig. 12: Identifying Instrument Cluster (2004 Chevrolet Malibu)
Courtesy of GENERAL MOTORS CORP.

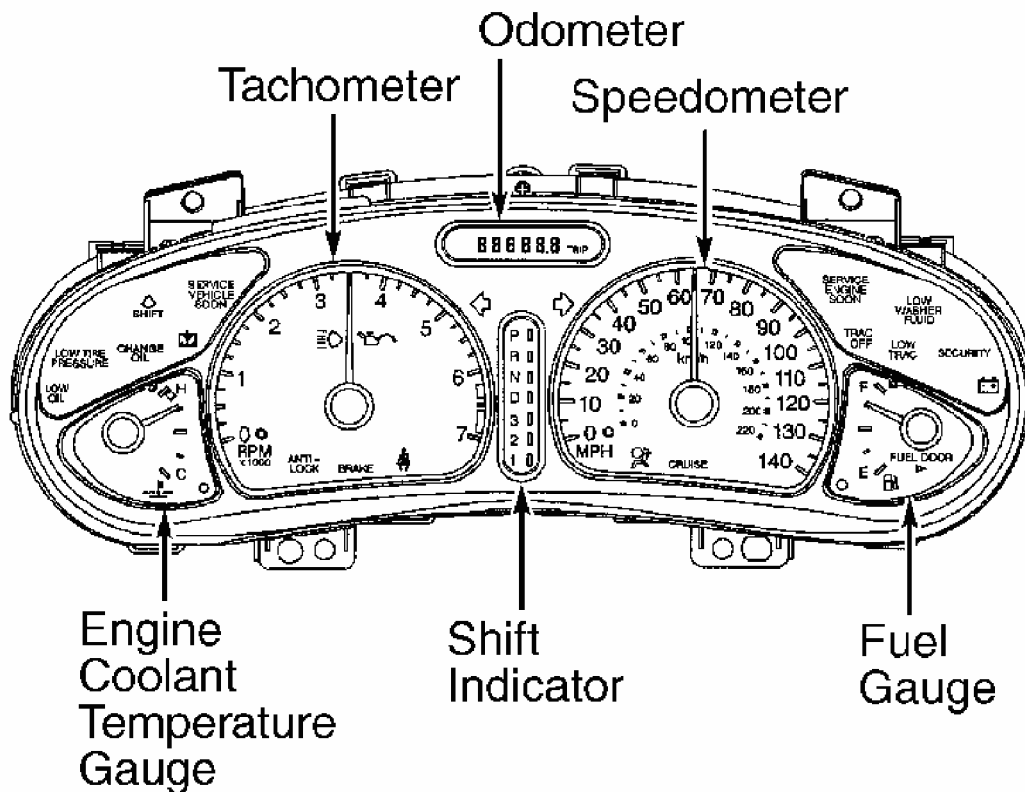
2004 OLDSMOBILE ALERO

The GM Oil Life System™ calculates when to change engine oil and filter, based on vehicle use. Whenever the oil is changed, the system must be reset so the next required oil changed can be calculated. If oil is changed before CHANGE OIL lamp is lit, reset the oil life system. See **Fig. 13**.

1. Turn ignition to ON, with engine off.
2. Slowly fully press and release accelerator pedal 3 times within 5 seconds. Reset is complete when chimes sound and CHANGE OIL lamp goes out. If lamp stays on and no chime is heard, repeat the reset procedure.
3. Turn key to OFF.
4. If CHANGE OIL lamp comes back on when vehicle is started, engine oil life system has not reset. Repeat procedure.

2002 Chevrolet Camaro

GENERAL INFORMATION Service Reminder Indicators - General Motors (Except Cadillac)

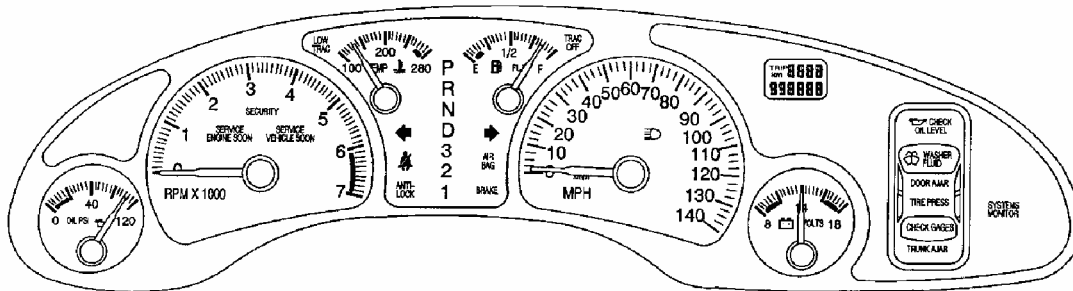


G99H03945

Fig. 13: Identifying Instrument Panel Cluster
Courtesy of GENERAL MOTORS CORP.

2004 PONTIAC BONNEVILLE

Display OIL LIFE on the DIC. See **Fig. 14-Fig. 16** . Turn ignition OFF. Press and hold RESET button for more than 5 seconds. Oil life will change to 100 percent.



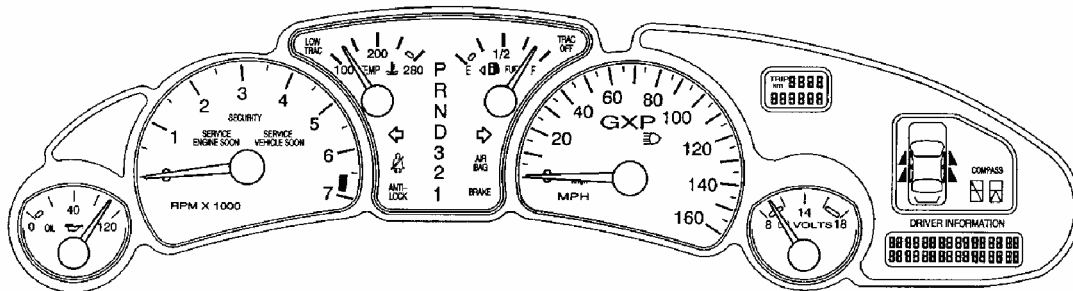
G00275772

Fig. 14: Identifying Standard Instrument Cluster (2004 Pontiac Bonneville; 3.8L V6)

2002 Chevrolet Camaro

GENERAL INFORMATION Service Reminder Indicators - General Motors (Except Cadillac)

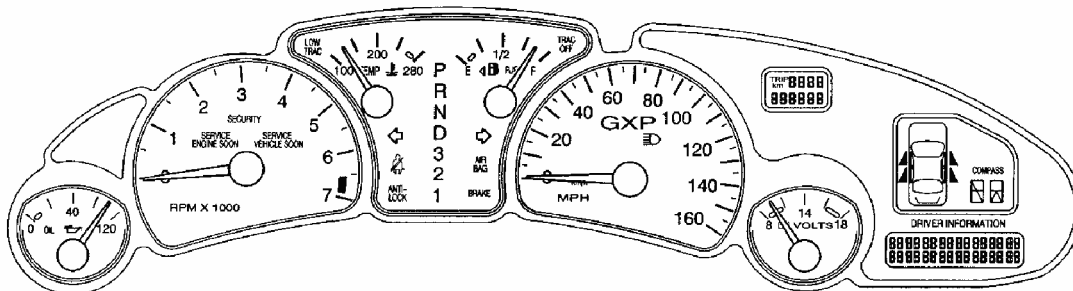
Courtesy of GENERAL MOTORS CORP.



G00275774

Fig. 15: Identifying Instrument Cluster With Driver Information Center (2004 Pontiac Bonneville; 3.8L V6)

Courtesy of GENERAL MOTORS CORP.



G00275774

Fig. 16: Identifying Instrument Cluster With Driver Information Center (2004 Pontiac Bonneville; 4.6L V6)

Courtesy of GENERAL MOTORS CORP.

2004 PONTIAC GRAND AM

The GM Oil Life System™ calculates when to change engine oil and filter, based on vehicle use. Whenever the oil is changed, the system must be reset so the next required oil changed can be calculated. If oil is changed before CHANGE OIL lamp is lit, reset the oil life system. See **Fig. 17**.

1. Turn ignition to ON, with engine off.
2. Slowly fully press and release accelerator pedal 3 times within 5 seconds. Reset is complete when chimes sound and CHANGE OIL lamp goes out. If lamp stays on and no chime is heard, repeat the reset procedure.
3. Turn key to OFF.
4. If CHANGE OIL lamp comes back on when vehicle is started, engine oil life system

2002 Chevrolet Camaro

GENERAL INFORMATION Service Reminder Indicators - General Motors (Except Cadillac)

has not reset. Repeat procedure.

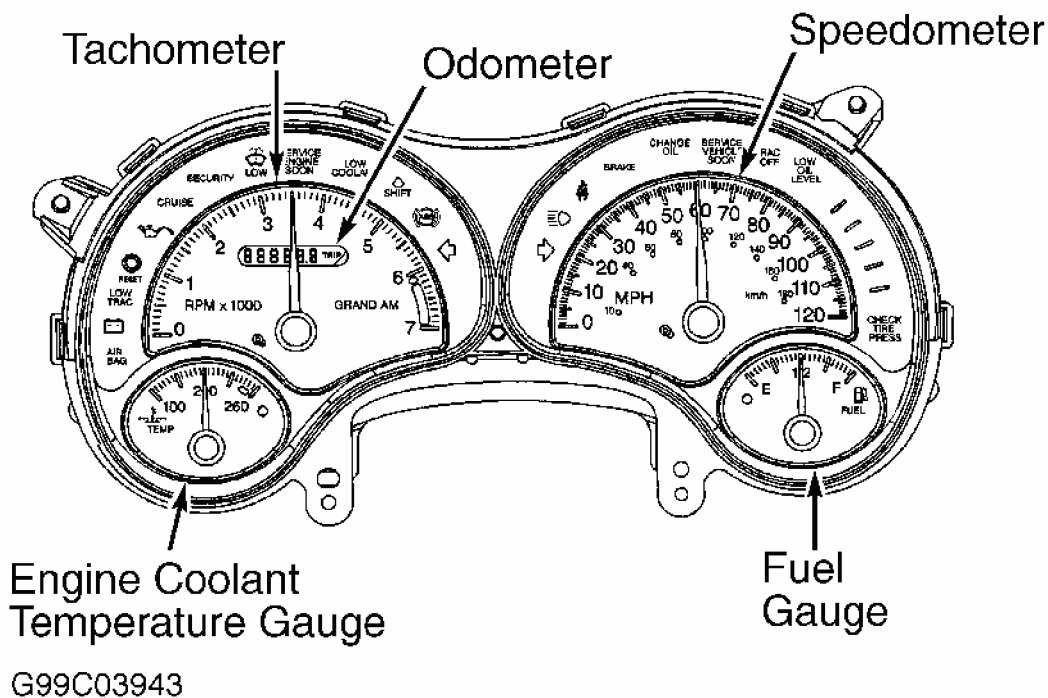


Fig. 17: Identifying Instrument Panel Cluster
Courtesy of GENERAL MOTORS CORP.

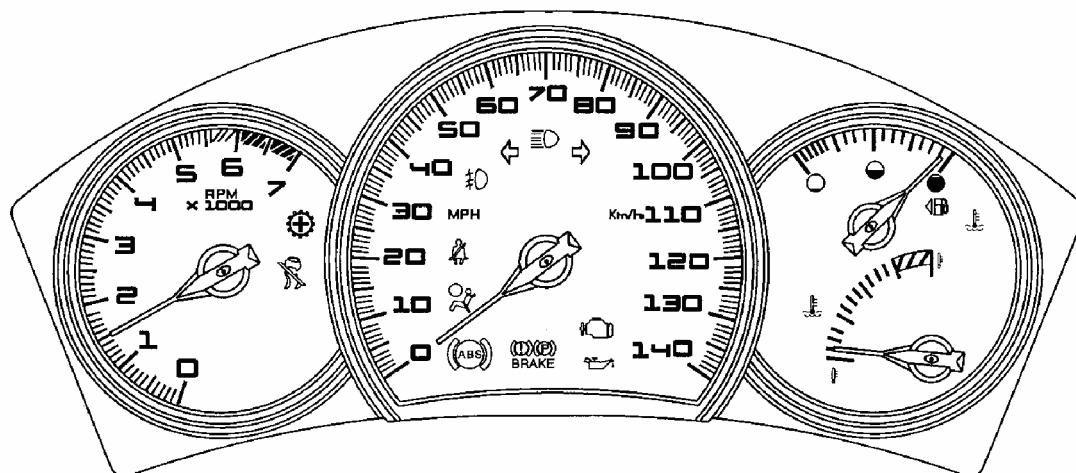
2004 PONTIAC GRAND PRIX

GM Oil Life System calculates when to change your engine oil and filter based on vehicle use. Anytime your oil is changed, reset the system so it can calculate when the next oil change is required. If a situation occurs where you change your oil prior to a CHANGE OIL SOON message appearing on the DIC, reset the system. See **Fig. 18**.

1. Press options button on the DIC until ENGINE OIL MONITOR appears on the DIC screen.
2. Press set/reset button to reset the system. Next screen indicates that the engine oil monitor system has been reset. If vehicle is equipped with the trip computer DIC, when the gage button is pressed and OIL LIFE REMAINING mode appears, it should read 100 percent OIL LIFE REMAINING.
3. Turn key to OFF.
4. If CHANGE OIL SOON message comes back on when you start your vehicle, the engine oil life system has not reset. Repeat procedure.

2002 Chevrolet Camaro

GENERAL INFORMATION Service Reminder Indicators - General Motors (Except Cadillac)



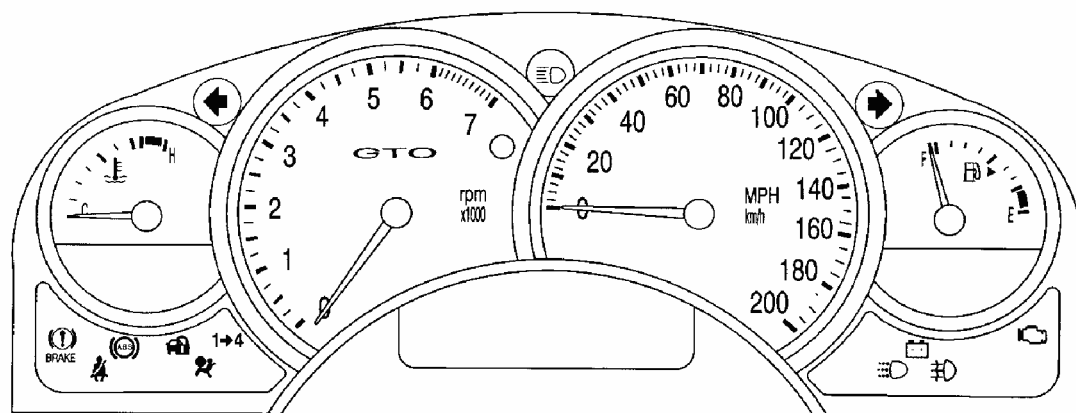
G00275775

Fig. 18: Identifying Instrument Cluster (2004 Pontiac Grand Prix)
Courtesy of GENERAL MOTORS CORP.

2004 PONTIAC GTO

The GM Oil Life System™ calculates when to change your engine oil and filter based on vehicle use. Anytime your oil is changed, reset the system so it can calculate when the next oil change is required. If a situation occurs where you change your oil prior to a Service Engine Oil message being turned on, reset the system. See **Fig. 19**.

1. With engine off, turn ignition key to ON.
2. Fully press and release accelerator pedal slowly 2 times within 5 seconds.
3. Turn key to LOCK. If Service Engine Oil message comes back on when you start your vehicle, engine oil life system has not reset. Repeat procedure.



G00275776

Fig. 19: Identifying Instrument Cluster (Pontiac GTO)

Courtesy of GENERAL MOTORS CORP.**2005 BUICK CENTURY**

After changing the engine oil, reset the system by performing the following steps:

1. Turn the ignition key to RUN with the engine off.
2. Fully press and release the accelerator pedal slowly three times within five seconds. If the CHANGE OIL SOON light flashes, the system is resetting.
3. Turn the key to OFF, then start the vehicle. The oil life will change to 100 percent. If the CHANGE OIL SOON light comes back on when you start your vehicle, the engine oil life system has not reset. Repeat the procedure.

2005-07 BUICK LACROSSE

After changing the engine oil, reset the system by performing the following steps:

- Vehicles with Driver Information Center (DIC)
 1. Press the option button on the DIC until ENGINE OIL MONITOR appears on the DIC screen.
 2. Press the set/reset button to reset the system. The next screen indicates that the CHANGE OIL SOON message has been reset. If the vehicle has the uplevel DIC, when the gages button is pressed and the OIL LIFE REMAINING mode appears, it should read 100 percent OIL LIFE REMAINING.
 3. Turn the key to OFF.
- Vehicles without Driver Information Center (DIC)
 1. With the engine off, turn the ignition key to RUN.
 2. Fully press and release the accelerator pedal slowly three times within five seconds.
 3. Turn the key to OFF, then start the vehicle.

If the light or message comes back on when you start your vehicle, the oil life system has not reset. Repeat the procedure.

2005 BUICK LESABRE & PARK AVENUE

Always reset the engine oil life to 100% after every oil change. It will not reset itself. To reset the Engine Oil Life System, do the following:

1. Display the OIL LIFE INDEX on the DIC.
2. Press and hold the RESET button on the DIC for more than five seconds. The oil life will change to 100%.

2002 Chevrolet Camaro

GENERAL INFORMATION Service Reminder Indicators - General Motors (Except Cadillac)

3. Turn the key to OFF.

If the CHANGE ENGINE OIL SOON message comes back on when you start your vehicle, the Engine Oil Life System has not reset. Repeat the procedure.

2005 CHEVROLET CLASSIC

GM Oil Life System calculates when to change your engine oil and filter based on vehicle use. Anytime your oil is changed, reset the system so it can calculate when the next oil change is required. If a situation occurs where you change your oil prior to a Change Oil Soon message being turned on, reset the system. After changing the engine oil, reset the system.

1. Display OIL LIFE RESET on the DIC.
2. Press and hold ENTER button for at least one second. An ACKNOWLEDGED display message will appear for 3 seconds or until the next button is pressed. This will tell you the system has been reset.
3. Turn key to OFF.
4. If Change Oil Soon message comes back on when you start your vehicle, engine oil life system has not reset. Repeat the procedure.

2005-07 CHEVROLET COBALT

After changing the engine oil, the system must be reset as follows:

1. Turn the ignition to RUN, with engine off.
2. Press the information and reset buttons on the DIC at the same time to enter the personalization menu.
3. Press the information button to scroll through the available personalization menu modes until the DIC display shows OIL-LIFE RESET.
4. Press and hold the reset button until the DIC display shows ACKNOWLEDGED. This will tell you the system has been reset.
5. Turn the key to LOCK.

If the CHANGE OIL SOON message comes back on when you start your vehicle, the engine oil life system has not reset. Repeat the reset procedure.

2005-07 CHEVROLET CORVETTE

To reset the CHANGE ENGINE OIL message after an oil change, do the following:

1. Press the TRIP button so the OIL LIFE percentage is displayed.
2. Press RESET and hold for two seconds. OIL LIFE REMAINING 100% will appear.

2002 Chevrolet Camaro

GENERAL INFORMATION Service Reminder Indicators - General Motors (Except Cadillac)

If the CHANGE ENGINE OIL message comes back on when you start your vehicle, the engine oil life system has not reset. Repeat the procedure.

2005-06 CHEVROLET IMPALA & MONTE CARLO

To reset the CHANGE ENGINE OIL message, use one of the following procedures:

Using The Radio

1. Turn the ignition to ACC or ON, with the radio off.
2. Press and hold the TUNE DISP knob on the radio for at least five seconds until SETTINGS is displayed.
3. Press the SEEK PSCAN up or down arrow to scroll through the main menu.
4. Scroll until OIL LIFE appears on the display.
5. Press the 1 PREV or 2 NEXT buttons to enter the sub-menu. RESET will be displayed.
6. Press the TUNE DISP knob to reset. A chime will be heard to verify the new setting and DONE will be displayed for one second.
7. Once the indicator has been reset, scroll until EXIT appears on the display.
8. Press the TUNE DISP knob to exit programming. A chime will be heard to verify the exit.
9. Turn the key to OFF.

If the CHANGE ENGINE OIL message comes back on when you start your vehicle, the engine oil life system has not reset. Repeat the procedure.

Using the Accelerator Pedal

1. Turn the ignition to ON, with the engine off.
2. Fully press and release the accelerator pedal slowly three times within five seconds. If the CHANGE ENGINE OIL message flashes, the system is reset.
3. However, if it stays on, it did not reset. Repeat the procedure.
4. Turn the key to OFF.

If the CHANGE ENGINE OIL message comes back on when you start your vehicle, the engine oil life system has not reset. Repeat the procedure.

2005-06 CHEVROLET MALIBU

After changing the engine oil, reset the system by performing the following steps:

1. Display OIL LIFE RESET on the DIC.
2. Press and hold the ENTER button for at least one second. An ACKNOWLEDGED display message will appear for three seconds or until the next button is pressed. This

2002 Chevrolet Camaro

GENERAL INFORMATION Service Reminder Indicators - General Motors (Except Cadillac)

will tell you the system has been reset.

3. Turn the key to OFF.

2005 PONTIAC BONNEVILLE

Always reset the engine oil life to 100% after every oil change. It will not reset itself. To reset the Engine Oil Life System, do the following:

1. Display OIL LIFE on the DIC.
2. Press and hold the RESET button for more than five seconds. The oil life will change to 100%.
3. Turn the key to OFF.

If the ENGINE OIL CHANGE SOON DIC message comes back on when you start your vehicle, the Engine Oil Life System has not reset. Repeat the procedure.

2005-07 PONTIAC G6

1. With the CHANGE OIL SOON message displayed, press any of the three DIC buttons to clear the CHANGE OIL SOON message.
2. Display OIL LIFE RESET on the DIC.
3. Press and hold the ENTER button for at least one second. An ACKNOWLEDGED display message will appear for three seconds or until the next button is pressed. This will tell you the system has been reset.
4. Turn the ignition to OFF. If CHANGE OIL SOON message comes back after engine is started, repeat reset procedure.

2005 PONTIAC GRAND AM

After changing the engine oil, the system must be reset. To reset the CHANGE OIL light, use the following procedure:

Using the Accelerator Pedal

1. Turn the ignition to ON, with the engine off.
2. Fully press and release the accelerator pedal slowly three times within five seconds. The reset is complete when you hear the chimes and the CHANGE OIL light goes out. However, if the light stays on and no chime is heard, you will need to repeat the reset procedure.
3. Turn the key to OFF.

If the CHANGE OIL light comes back on when you start your vehicle, the engine oil life system has not reset. Repeat the procedure.

2005-07 PONTIAC GRAND PRIX

2002 Chevrolet Camaro

GENERAL INFORMATION Service Reminder Indicators - General Motors (Except Cadillac)

1. Turn ignition on, with engine off. Press the options button on the DIC until ENGINE OIL MONITOR appears on the DIC screen.
2. Press the SET/RESET button to reset the system. The next screen indicates that the engine oil monitor system has been reset. If the vehicle is equipped with the trip computer DIC, when the gage button is pressed and the OIL LIFE REMAINING mode appears, it should read 100 percent OIL LIFE REMAINING.
3. Turn ignition off. If CHANGE OIL SOON message comes back on when engine is started, repeat reset procedure.

2005-06 PONTIAC GTO

The Engine Oil Life System calculates when to change the engine oil and filter based on vehicle use. Anytime engine oil is changed, reset the system so it can calculate when the next oil change is required. If a situation occurs where you change your oil prior to the Service Engine Oil message being turned on, reset the system. See **Fig. 19**.

1. With the engine off, turn the ignition key to ON.
2. Fully press and release the accelerator pedal slowly two times within five seconds.
3. Turn the key to LOCK. If the Service Engine Oil message comes back on when you start your vehicle, the engine oil life system has not reset. Repeat the procedure.

2006-07 BUICK LUCERNE

After changing the engine oil, reset the system by performing the following steps:

1. Press the option button on the DIC until ENGINE OIL MONITOR appears on the DIC screen.
2. Press the set/reset button to reset the system. The next screen indicates that the CHANGE OIL SOON message has been reset. If the vehicle has the uplevel DIC, when the gages button is pressed and the OIL LIFE REMAINING mode appears, it should read 100 percent OIL LIFE REMAINING.
3. Turn the key to OFF. If the light or message comes back on when you start your vehicle, the oil life system has not reset. Repeat the procedure.

2006-07 PONTIAC SOLSTICE

1. Turn ignition to RUN position, with engine off.
2. Press the information and reset buttons on the DIC at the same time to enter personalization menu.
3. Press the information button to scroll through the available personalization menu modes until the DIC display shows OIL LIFE RESET.
4. Press and hold reset button until the DIC display shows ACKNOWLEDGED. This indicates that system has been reset.

2002 Chevrolet Camaro

GENERAL INFORMATION Service Reminder Indicators - General Motors (Except Cadillac)

5. Turn ignition to LOCK position. If the CHANGE OIL SOON message comes back when engine is started, repeat reset procedure.

2007 CHEVROLET IMPALA & MONTE CARLO

After changing the engine oil, reset the system by performing the following steps:

1. Press the option button on the DIC until OIL LIFE REMAINING appears on the DIC screen.
2. Press the SET/RESET button on DIC for more than 5 seconds. The oil life will change to 100%.
3. Turn the key to OFF. If the light or message comes back on when you start your vehicle, the oil life system has not reset. Repeat the procedure.

2007 CHEVROLET MALIBU

After changing the engine oil, reset the system by performing the following steps:

1. Display OIL LIFE RESET appears on the DIC screen.
2. Press hold the ENTER button on DIC for at least 3 seconds. An ACKNOWLEDGE display message will appear for 3 seconds or until the next button is pressed. The oil life will change to 100%.
3. Turn the key to OFF. If the light or message comes back on when you start your vehicle, the oil life system has not reset. Repeat the procedure.

2007 PONTIAC G5

1. Turn ignition to RUN position, with engine off.
2. Press the information and reset buttons on the DIC at the same time to enter personalization menu.
3. Press the information button to scroll through the available personalization menu modes until the DIC display shows OIL LIFE RESET.
4. Press and hold reset button until the DIC display shows ACKNOWLEDGED. This indicates that system has been reset.
5. Turn ignition to LOCK position. If the CHANGE OIL SOON message comes back when engine is started, repeat reset procedure.

CHANGE ENGINE OIL LIGHT (LIGHT TRUCKS, VANS & SUVS)

1996-98 GM C/K SERIES

NOTE: These models may or may not be equipped with an CHANGE OIL SOON (or CHANGE ENGINE OIL) light.

2002 Chevrolet Camaro

GENERAL INFORMATION Service Reminder Indicators - General Motors (Except Cadillac)

1. To reset oil life monitor, turn ignition switch to RUN position, with engine off. Cycle accelerator pedal from closed throttle to Wide Open Throttle (WOT) 3 times within 5 seconds. CHANGE OIL SOON light will flash for 2 seconds when system is reset.
2. If CHANGE OIL SOON light comes on and stays on for 5 seconds, the system did not reset. Repeat reset procedures.

1999-2000 GM C/K SERIES

1. The CHANGE OIL SOON (or CHANGE ENGINE OIL) light is illuminated when its time to change engine oil, usually between 3000 and 10,000 miles since last oil change.
2. To reset oil life monitor, turn ignition switch to RUN position, with engine off. Cycle accelerator pedal from closed throttle to Wide Open Throttle (WOT) 3 times within 5 seconds. CHANGE OIL SOON light will flash for 2 seconds when system is reset.
3. If CHANGE OIL SOON light comes on and stays on for 5 seconds, the system did not reset. Repeat reset procedures.

2000-01 CHEVROLET VENTURE

1. The CHANGE ENGINE OIL message is displayed when its time to change engine oil, usually between 3000 and 7500 miles since last oil change. The oil change interval is not based on mileage, but on engine revolutions and engine operating temperature.
2. To reset the oil life monitor, turn the ignition on with the engine off. Fully depress and release the accelerator pedal slowly 3 times within 5 seconds. Turn ignition off. If CHANGE ENGINE OIL light flashes 2 times, oil life monitor is reset. If the CHANGE ENGINE OIL light comes back on and stays on for 5 seconds, oil life monitor has not reset. Repeat this step.

2000-01 OLDSMOBILE SILHOUETTE

1. The CHANGE ENGINE OIL message is displayed when its time to change engine oil, usually between 3000 and 7500 miles since last oil change. The oil change interval is not based on mileage, but on engine revolutions and engine operating temperature.
2. To reset the oil life monitor, turn the ignition on with the engine off. Fully depress and release the accelerator pedal slowly 3 times within 5 seconds. Turn ignition off. If CHANGE ENGINE OIL light flashes 2 times, oil life monitor is reset. If the CHANGE ENGINE OIL light comes back on and stays on for 5 seconds, oil life monitor has not reset. Repeat this step.

2000-01 PONTIAC MONTANA

1. The CHANGE ENGINE OIL message is displayed when its time to change engine oil, usually between 3000 and 7500 miles since last oil change. The oil change interval is not based on mileage, but on engine revolutions and engine operating temperature.
2. To reset the oil life monitor, turn the ignition on with the engine off. Fully depress and

2002 Chevrolet Camaro

GENERAL INFORMATION Service Reminder Indicators - General Motors (Except Cadillac)

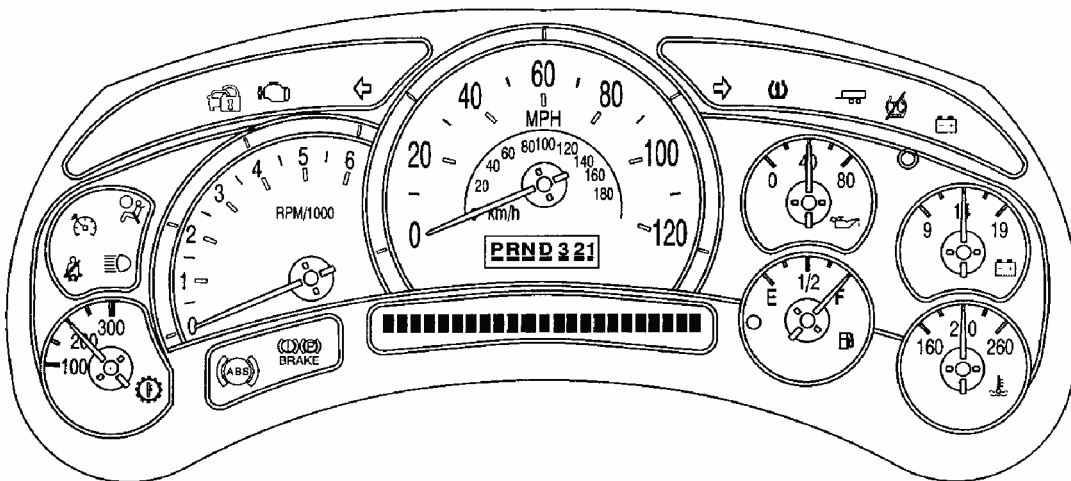
release the accelerator pedal slowly 3 times within 5 seconds. Turn ignition off. If CHANGE ENGINE OIL light flashes 2 times, oil life monitor is reset. If the CHANGE ENGINE OIL light comes back on and stays on for 5 seconds, oil life monitor has not reset. Repeat this step.

2001-04 GM C/K SERIES

The engine oil life monitor will indicate when to change the engine oil - usually between 3,000 miles (5,000 km) and 10,000 miles (16,000 km) since the last oil change. See **Fig. 20**. Under severe conditions, the CHANGE OIL SOON light may be displayed before 3,000 miles (5,000 km). The vehicle must not be driven more than 10,000 miles (16,000 km) or 12 months without an oil change.

Reset the oil life monitor when the oil has been changed, use the following procedure.

1. Turn the ignition key to the RUN position.
2. Fully push and release the accelerator pedal 3 times within 5 seconds.
3. If the Change Oil Soon light flashes, the system is resetting.
4. Start the vehicle.
5. The oil life will change to 100%.
6. If the Change Oil Soon light comes back on, the system has not reset. Repeat the procedure.



G00275758

Fig. 20: Identifying Instrument Cluster (2004 Chevrolet Avalanche, Silverado, Suburban, Tahoe, GMC Sierra, Yukon & Yukon XL)
Courtesy of GENERAL MOTORS CORP.

2001-04 PONTIAC AZTEK

2002 Chevrolet Camaro

GENERAL INFORMATION Service Reminder Indicators - General Motors (Except Cadillac)

Engine oil life monitor calculates engine oil temperature and engine revolutions. It indicates when the engine oil is nearly worn out. CHANGE ENGINE OIL light on the instrument cluster is illuminated when it is time to change the engine oil. See **Fig. 21**.

1. To reset oil life monitor on a vehicle with a Driver Information Center (DIC), go to step 3. To reset the oil life monitor on a vehicle NOT equipped with a Driver Information Center, turn ignition switch to ON or RUN position with engine off.
2. Depress accelerator pedal slowly from closed throttle to wide open throttle 3 times within 5 seconds. Turn ignition off. Start vehicle. If CHANGE ENGINE OIL light comes back on and stays on, the oil life monitor has not reset. Repeat reset procedure.
3. To reset oil life monitor on a vehicle equipped with a Driver Information Center (DIC), turn ignition switch to ON position with engine off. Press MODE button on DIC until OIL LIFE LEFT/HOLD SET TO RESET is displayed. Press and hold SET button until 100 percent is displayed. Three chimes should sound and CHANGE ENGINE OIL message will go out. If CHANGE ENGINE OIL message comes back on, system has not reset. Repeat reset procedures.

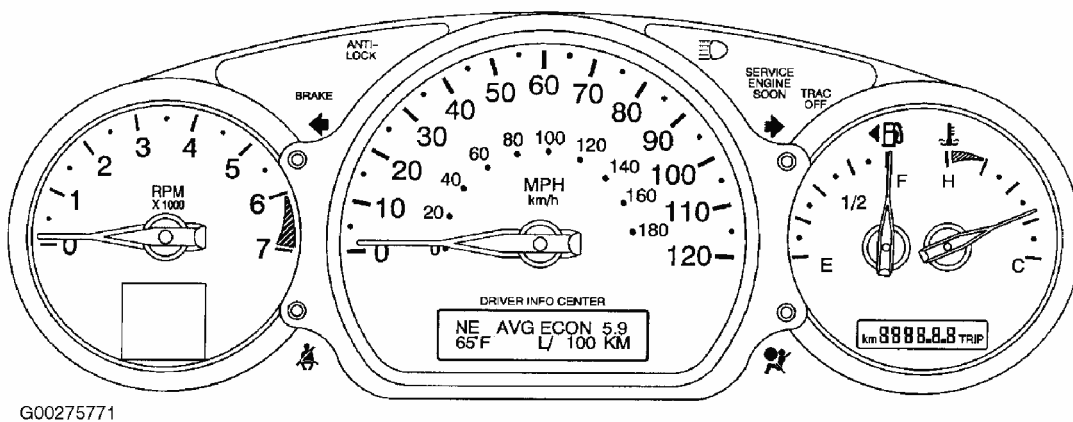


Fig. 21: Identifying Instrument Cluster (2004 Pontiac Aztek)
Courtesy of GENERAL MOTORS CORP.

2002-04 BUICK RENDEZVOUS

Engine oil life monitor calculates engine oil temperature and engine revolutions. It indicates when the engine oil is nearly worn out. CHANGE ENGINE OIL light on the instrument cluster is illuminated when it is time to change the engine oil. See **Fig. 22**.

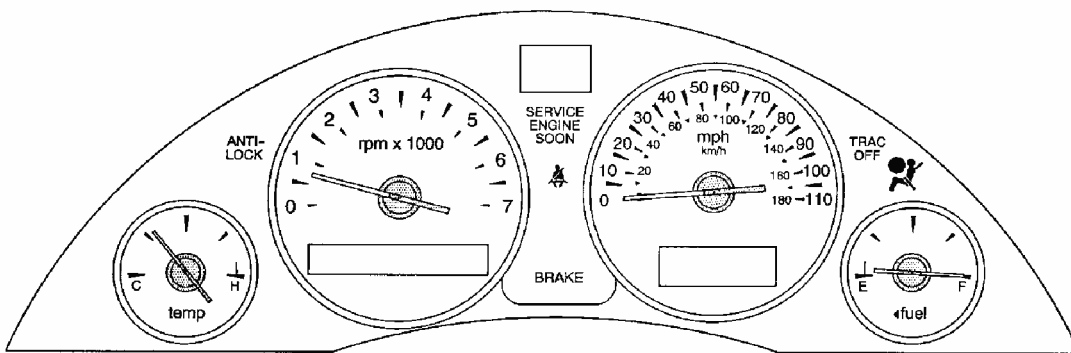
1. To reset oil life monitor on a vehicle with a Driver Information Center (DIC), go to step 3. To reset the oil life monitor on a vehicle NOT equipped with a Driver Information Center, turn ignition switch to ON or RUN position with engine off.
2. Depress accelerator pedal slowly from closed throttle to wide open throttle 3 times within 5 seconds. Turn ignition off. Start vehicle. If CHANGE ENGINE OIL light

2002 Chevrolet Camaro

GENERAL INFORMATION Service Reminder Indicators - General Motors (Except Cadillac)

comes back on and stays on, the oil life monitor has not reset. Repeat reset procedure.

3. To reset oil life monitor on a vehicle equipped with a Driver Information Center (DIC), turn ignition switch to ON position with engine off. Press MODE button on DIC until OIL LIFE LEFT/HOLD SET TO RESET is displayed. Press and hold SET button until 100 percent is displayed. Three chimes should sound and CHANGE ENGINE OIL message will go out. If CHANGE ENGINE OIL message comes back on, system has not reset. Repeat reset procedures.



G00275755

Fig. 22: Identifying Instrument Cluster (2004 Buick Rendezvous)
Courtesy of GENERAL MOTORS CORP.

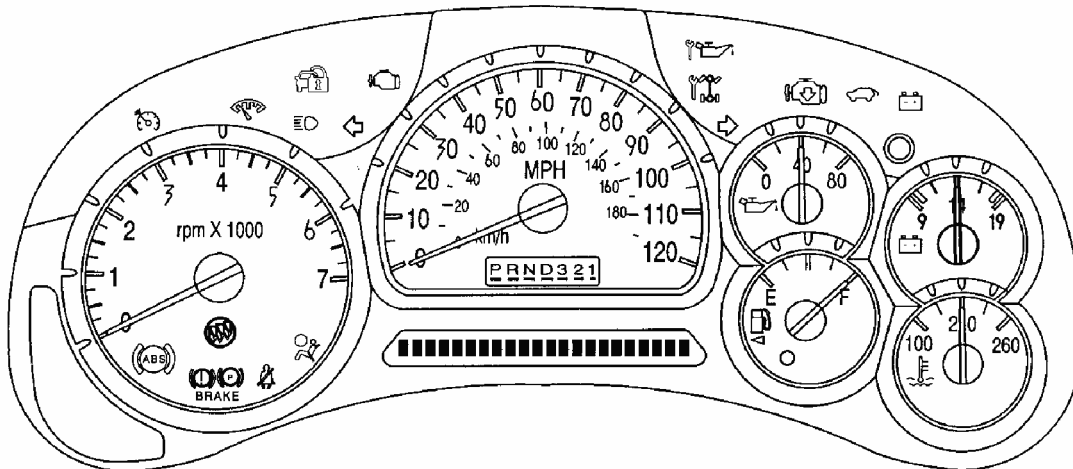
2002-04 CHEVROLET TRAILBLAZER

The CHANGE ENG OIL message is displayed when its time to change engine oil, usually between 3000 and 7500 miles since last oil change. See **Fig. 23**. Under severe conditions, the indicator may come on before 3000 miles. The oil change interval is not based on mileage, but on engine revolutions and engine operating temperature.

Vehicle should not be driven more than 7500 miles or 12 months without an oil and oil filter change. System will not detect dust in the oil. So if vehicle is driven in a dusty area, be sure to change oil and oil filter every 3000 miles or sooner if CHANGE OIL SOON indicator comes on. Reset system when oil has been changed.

2002 Chevrolet Camaro

GENERAL INFORMATION Service Reminder Indicators - General Motors (Except Cadillac)



G00275754

Fig. 23: Identifying Instrument Panel Cluster
Courtesy of GENERAL MOTORS CORP.

Manually Resetting Oil Life System

To reset the oil life monitor, turn ignition switch to ON or RUN position with engine off. Depress accelerator pedal slowly to wide open throttle 3 times within 5 seconds. If CHANGE ENG OIL light flashes for 5 seconds, oil life monitor is reset. If the CHANGE ENG OIL light does not flash, oil life monitor has not reset. Repeat this step.

Reset Oil Life System Using Driver Information Center

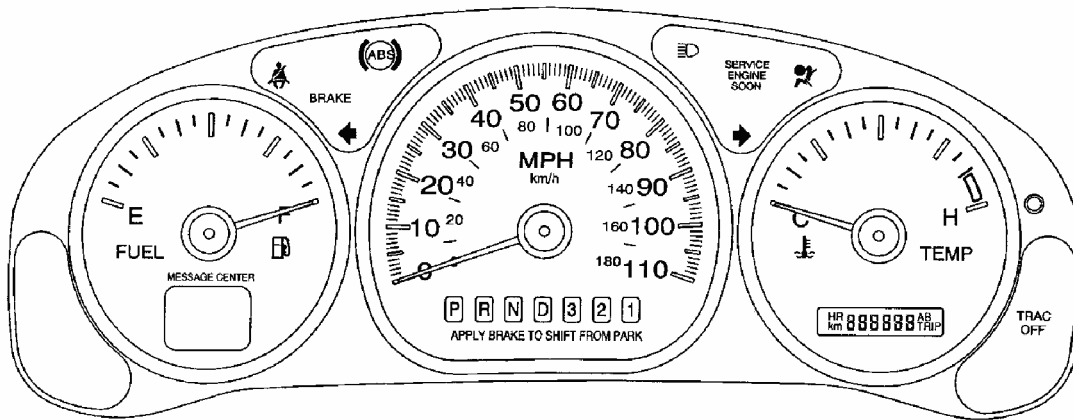
If vehicle is equipped with a Driver Information Center (DIC), reset oil life monitor by pressing the Driver Information Center SELECT button for 5 seconds while ENGINE OIL LIFE is displayed.

2002-04 CHEVROLET VENTURE

1. The CHANGE ENGINE OIL message is displayed when its time to change engine oil, usually between 3000 and 7500 miles since last oil change. See **Fig. 24** and **Fig. 25**. The oil change interval is not based on mileage, but on engine revolutions and engine operating temperature.
2. To reset the oil life monitor, turn the ignition switch to RUN position with the engine off. Press trip/reset button repeatedly until OIL is displayed on Driver Information Center (DIC). Once OIL is displayed, press and hold trip/reset button for 5 seconds. When trip/reset button is released, 100 will be displayed (indicating 100 percent oil life remaining). Turn ignition off. If CHANGE ENGINE OIL message comes back on and stays on, oil life monitor has not reset. Repeat this procedure.

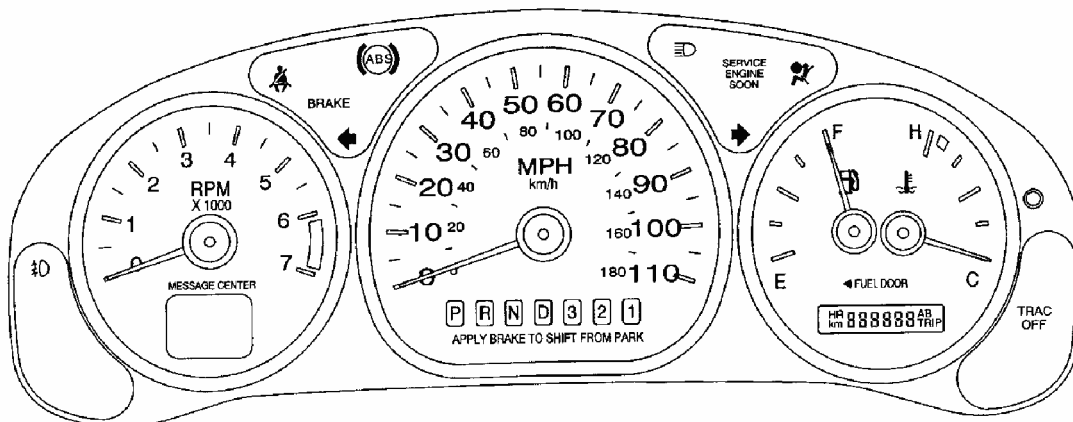
2002 Chevrolet Camaro

GENERAL INFORMATION Service Reminder Indicators - General Motors (Except Cadillac)



G00275769

Fig. 24: Identifying Instrument Cluster
Courtesy of GENERAL MOTORS CORP.



G00275770

Fig. 25: Identifying Instrument Cluster With Tachometer
Courtesy of GENERAL MOTORS CORP.

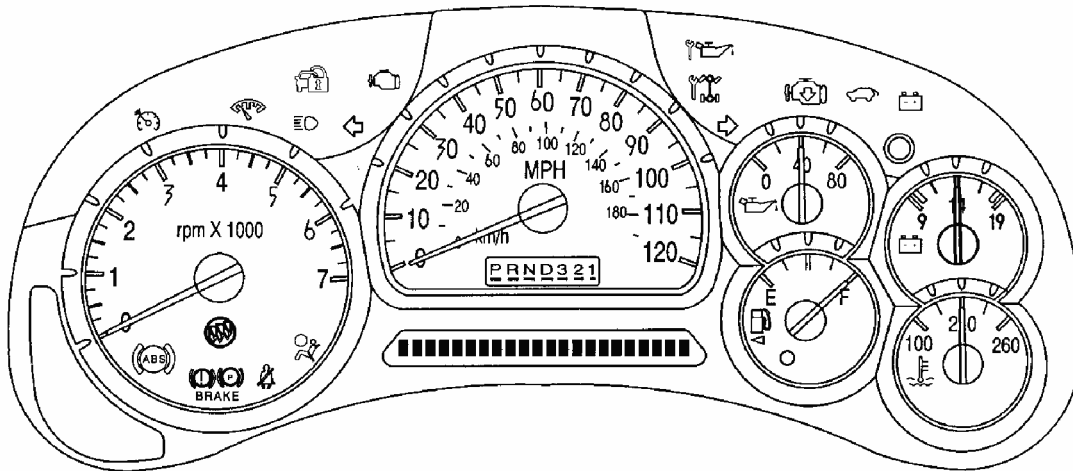
2002-04 GMC ENVOY & ENVOY XL

The CHANGE ENG OIL message is displayed when its time to change engine oil, usually between 3000 and 7500 miles since last oil change. See **Fig. 26**. Under severe conditions, the indicator may come on before 3000 miles. The oil change interval is not based on mileage, but on engine revolutions and engine operating temperature.

Vehicle should not be driven more than 7500 miles or 12 months without an oil and oil filter change. System will not detect dust in the oil. So if vehicle is driven in a dusty area, be sure to change oil and oil filter every 3000 miles or sooner if CHANGE OIL SOON indicator comes on. Reset system when oil has been changed.

2002 Chevrolet Camaro

GENERAL INFORMATION Service Reminder Indicators - General Motors (Except Cadillac)



G00275754

Fig. 26: Identifying Instrument Panel Cluster
Courtesy of GENERAL MOTORS CORP.

Manually Resetting Oil Life System

To reset the oil life monitor, turn ignition switch to ON or RUN position with engine off. Depress accelerator pedal slowly to wide open throttle 3 times within 5 seconds. If CHANGE ENG OIL light flashes for 5 seconds, oil life monitor is reset. If the CHANGE ENG OIL light does not flash, oil life monitor has not reset. Repeat this step.

Reset Oil Life System Using Driver Information Center

If vehicle is equipped with a Driver Information Center (DIC), reset oil life monitor by pressing the Driver Information Center SELECT button for 5 seconds while ENGINE OIL LIFE is displayed.

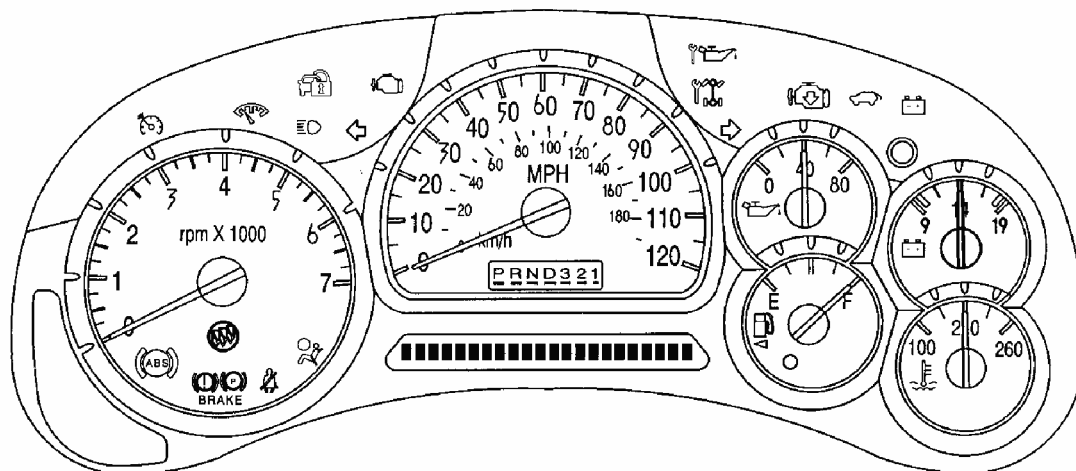
2002-04 OLDSMOBILE BRAVADA

The CHANGE ENG OIL message is displayed when its time to change engine oil, usually between 3000 and 7500 miles since last oil change. See **Fig. 27**. Under severe conditions, the indicator may come on before 3000 miles. The oil change interval is not based on mileage, but on engine revolutions and engine operating temperature.

Vehicle should not be driven more than 7500 miles or 12 months without an oil and oil filter change. System will not detect dust in the oil. So if vehicle is driven in a dusty area, be sure to change oil and oil filter every 3000 miles or sooner if CHANGE OIL SOON indicator comes on. Reset system when oil has been changed.

2002 Chevrolet Camaro

GENERAL INFORMATION Service Reminder Indicators - General Motors (Except Cadillac)



G00275754

Fig. 27: Identifying Instrument Panel Cluster
Courtesy of GENERAL MOTORS CORP.

Manually Resetting Oil Life System

To reset the oil life monitor, turn ignition switch to ON or RUN position with engine off. Depress accelerator pedal slowly to wide open throttle 3 times within 5 seconds. If CHANGE ENG OIL light flashes for 5 seconds, oil life monitor is reset. If the CHANGE ENG OIL light does not flash, oil life monitor has not reset. Repeat this step.

Reset Oil Life System Using Driver Information Center

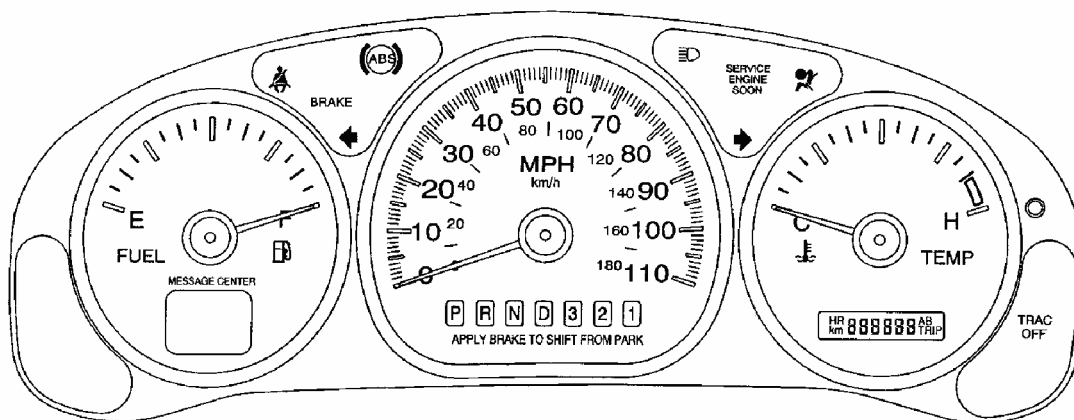
If vehicle is equipped with a Driver Information Center (DIC), reset oil life monitor by pressing the Driver Information Center SELECT button for 5 seconds while ENGINE OIL LIFE is displayed.

2002-04 OLDSMOBILE SILHOUETTE

1. The CHANGE ENGINE OIL message is displayed when its time to change engine oil, usually between 3000 and 7500 miles since last oil change. See **Fig. 28** and **Fig. 29**. The oil change interval is not based on mileage, but on engine revolutions and engine operating temperature.
2. To reset the oil life monitor, turn the ignition switch to RUN position with the engine off. Press trip/reset button repeatedly until OIL is displayed on Driver Information Center (DIC). Once OIL is displayed, press and hold trip/reset button for 5 seconds. When trip/reset button is released, 100 will be displayed (indicating 100 percent oil life remaining). Turn ignition off. If CHANGE ENGINE OIL message comes back on and stays on, oil life monitor has not reset. Repeat this procedure.

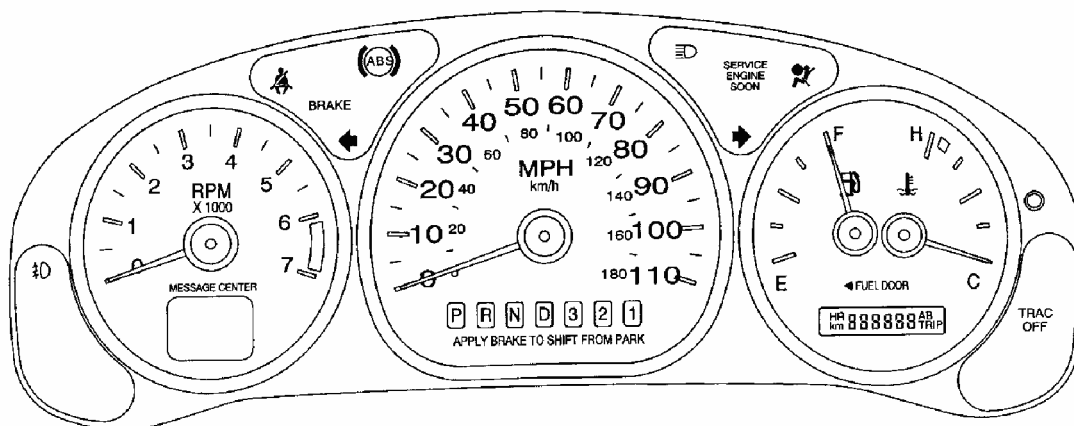
2002 Chevrolet Camaro

GENERAL INFORMATION Service Reminder Indicators - General Motors (Except Cadillac)



G00275769

Fig. 28: Identifying Instrument Cluster
Courtesy of GENERAL MOTORS CORP.



G00275770

Fig. 29: Identifying Instrument Cluster With Tachometer
Courtesy of GENERAL MOTORS CORP.

2002-04 PONTIAC MONTANA

1. The CHANGE ENGINE OIL message is displayed when its time to change engine oil, usually between 3000 and 7500 miles since last oil change. See **Fig. 28** and **Fig. 29**. The oil change interval is not based on mileage, but on engine revolutions and engine operating temperature.
2. To reset the oil life monitor, turn the ignition switch to RUN position with the engine off. Press trip/reset button repeatedly until OIL is displayed on Driver Information Center (DIC). Once OIL is displayed, press and hold trip/reset button for 5 seconds. When trip/reset button is released, 100 will be displayed (indicating 100 percent oil life remaining). Turn ignition off. If CHANGE ENGINE OIL message comes back on and

2002 Chevrolet Camaro

GENERAL INFORMATION Service Reminder Indicators - General Motors (Except Cadillac)

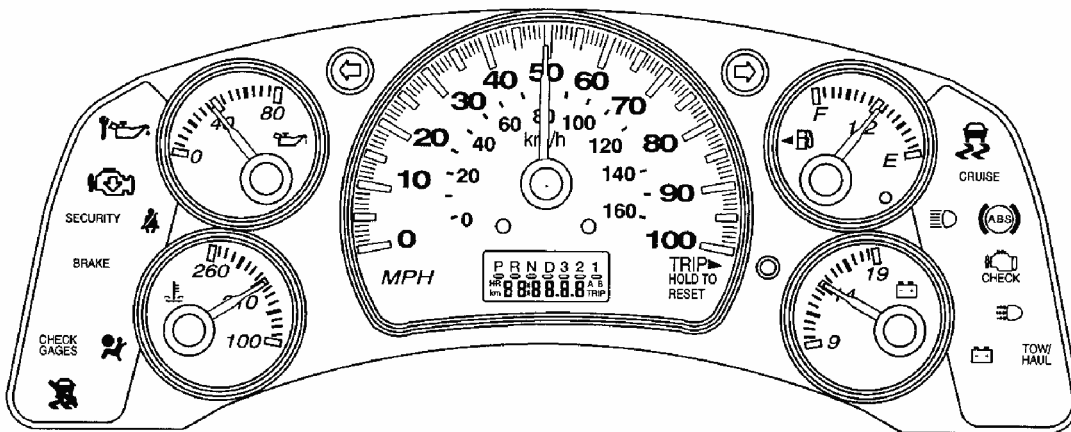
stays on, oil life monitor has not reset. Repeat this procedure.

2003-04 CHEVROLET EXPRESS, CUTAWAY & RV CUTAWAY

Engine oil life monitor will show when to change the engine oil and oil filter. This will usually occur between 3000 and 7500 miles since the last oil change. Under severe conditions, the indicator may come on before 3000 miles. See **Fig. 30**.

Vehicle should not be driven more than 7500 miles or 12 months without an oil and oil filter change. The system will not detect dust in the oil. So if the vehicle is driven in a dusty area, be sure to change the oil and oil filter every 3000 miles or sooner if the CHANGE OIL SOON indicator comes on.

1. To reset oil life monitor when the oil has been changed, turn ignition ON, with engine off.
2. Fully press and release accelerator pedal 3 times within 10 seconds.
3. If CHANGE OIL light flashes for 5 seconds, the system is reset. If light does not display for 5 seconds, you will need to reset the system again.



G00275762

Fig. 30: Identifying Instrument Cluster (2004 Chevrolet Express, Cutaway & RV Cutaway)

Courtesy of GENERAL MOTORS CORP.

2003-04 GMC SAVANA, SAVANA CAMPER SPECIAL & SAVANA SPECIAL

Engine oil life monitor will show when to change the engine oil and oil filter. This will usually occur between 3000 and 7500 miles since the last oil change. Under severe conditions, the indicator may come on before 3000 miles. See **Fig. 31**.

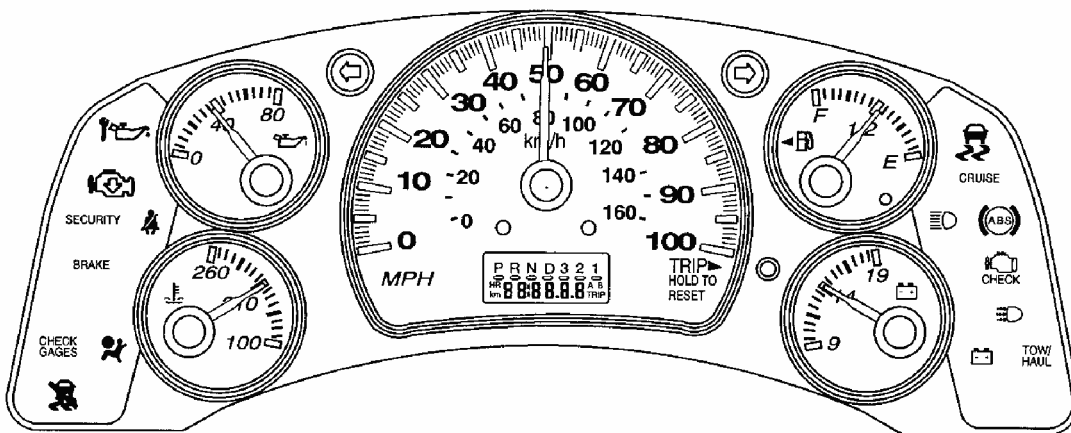
Vehicle should not be driven more than 7500 miles or 12 months without an oil and oil filter change. The system will not detect dust in the oil. So if the vehicle is driven in a dusty area,

2002 Chevrolet Camaro

GENERAL INFORMATION Service Reminder Indicators - General Motors (Except Cadillac)

be sure to change the oil and oil filter every 3000 miles or sooner if the CHANGE OIL SOON indicator comes on.

1. To reset oil life monitor when the oil has been changed, turn ignition ON, with engine off.
2. Fully press and release accelerator pedal 3 times within 10 seconds.
3. If CHANGE OIL light flashes for 5 seconds, the system is reset. If light does not display for 5 seconds, you will need to reset the system again.



G00275762

Fig. 31: Identifying Instrument Cluster (2004 GMC Savana, Savana Camper Special & Savana Special)

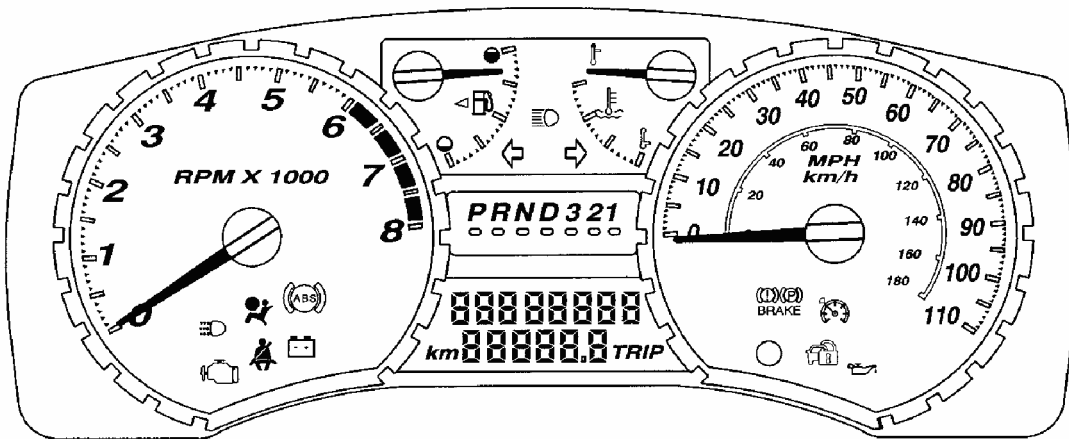
Courtesy of GENERAL MOTORS CORP.

2004-07 CHEVROLET COLORADO

1. Turn ignition ON, with engine off.
2. Press and release reset stem on instrument panel while OIL LIFE message is displayed.
3. Once the alternating OIL LIFE and RESET messages appear, press and hold stem in until several beeps will sound. This confirms that oil life system has been reset. Turn ignition off. If CHANGE OIL messages comes back after starting engine, repeat reset procedure.

2002 Chevrolet Camaro

GENERAL INFORMATION Service Reminder Indicators - General Motors (Except Cadillac)



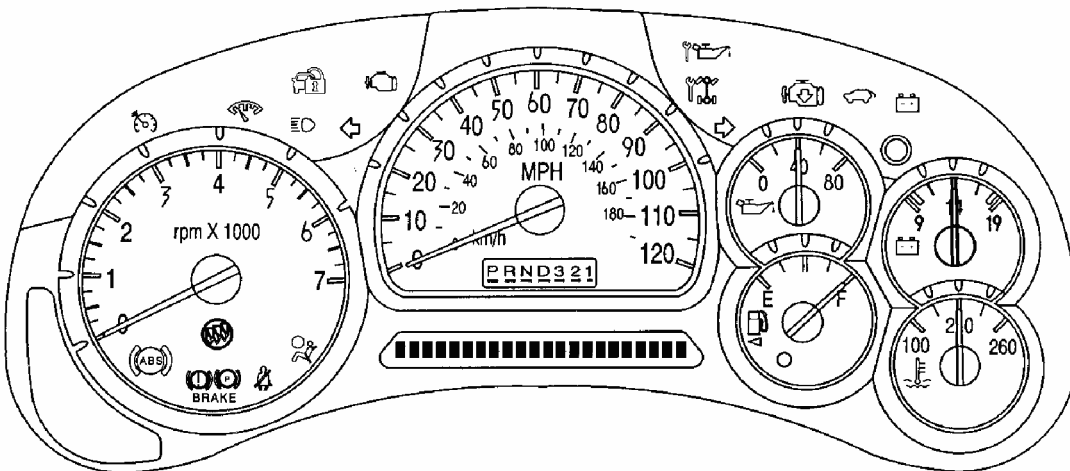
G00275761

Fig. 32: Identifying Instrument Cluster (2004 Chevrolet Colorado)
Courtesy of GENERAL MOTORS CORP.

2004 BUICK RAINIER

The CHANGE ENG OIL message is displayed when its time to change engine oil, usually between 3000 and 7500 miles since last oil change. See **Fig. 33**. Under severe conditions, the indicator may come on before 3000 miles. The oil change interval is not based on mileage, but on engine revolutions and engine operating temperature.

Vehicle should not be driven more than 7500 miles or 12 months without an oil and oil filter change. System will not detect dust in the oil. So if vehicle is driven in a dusty area, be sure to change oil and oil filter every 3000 miles or sooner if CHANGE OIL SOON indicator comes on. Reset system when oil has been changed.



G00275754

Fig. 33: Identifying Instrument Panel Cluster

Courtesy of GENERAL MOTORS CORP.

Manually Resetting Oil Life System

To reset the oil life monitor, turn ignition switch to ON or RUN position with engine off. Depress accelerator pedal slowly to wide open throttle 3 times within 5 seconds. If CHANGE ENG OIL light flashes for 5 seconds, oil life monitor is reset. If the CHANGE ENG OIL light does not flash, oil life monitor has not reset. Repeat this step.

Reset Oil Life System Using Driver Information Center

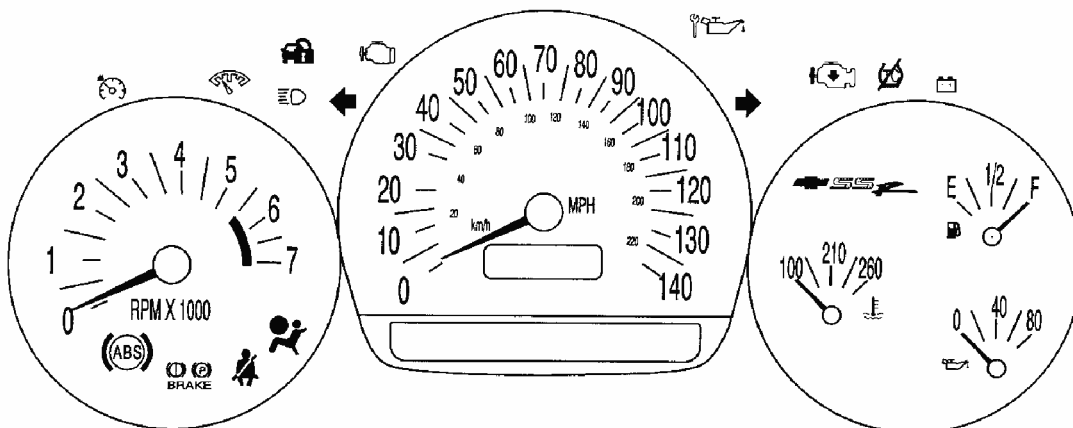
If vehicle is equipped with a Driver Information Center (DIC), reset oil life monitor by pressing the Driver Information Center SELECT button for 5 seconds while ENGINE OIL LIFE is displayed.

2004 CHEVROLET SSR

This vehicle has an engine oil life monitor. See **Fig. 34**. The GM Oil Life System™ will show when to change engine oil and oil filter. This will usually occur between 3000 miles and 7500 miles since the last oil change. Under severe conditions, the indicator may come on before 3000 miles.

Vehicle should not be driven more than 7500 miles or 12 months without an oil and oil filter change. The system will not detect dust in the oil. So if the vehicle is driven in a dusty area, be sure to change the oil and oil filter every 3000 miles or sooner if the CHANGE OIL SOON indicator comes on. Reset the system when the oil has been changed.

1. Turn ignition to ON without starting the engine.
2. Fully push and release accelerator pedal slowly 3 times within 5 seconds.
3. If CHANGE ENG OIL light flashes for 5 seconds, the system is reset. If light does not flash, repeat the procedure.



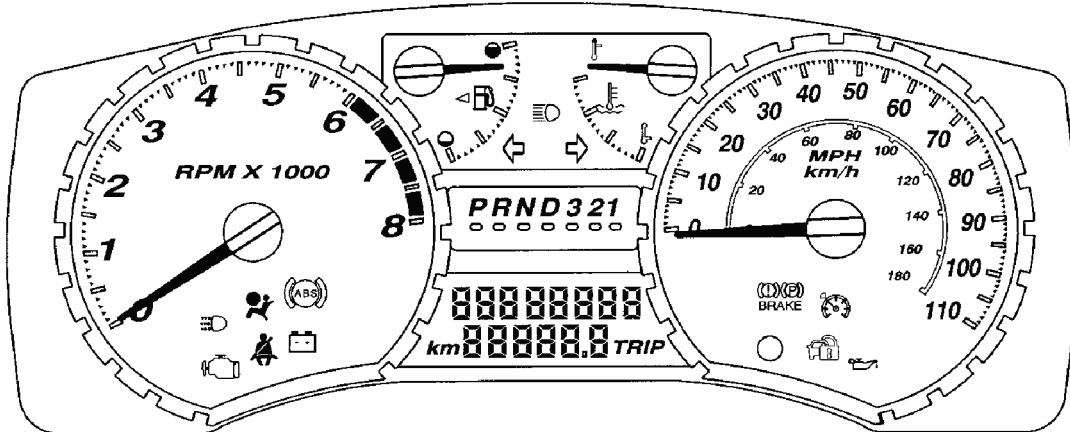
2002 Chevrolet Camaro

GENERAL INFORMATION Service Reminder Indicators - General Motors (Except Cadillac)

Fig. 34: Identifying Instrument Cluster (2004 Chevrolet SSR)
Courtesy of GENERAL MOTORS CORP.

2004-07 GMC CANYON

1. Turn ignition on, with engine off.
2. Press and hold reset stem on instrument cluster until the OIL LIFE message is displayed.
3. Once the alternating OIL LIFE and RESET messages appear, press and hold the stem until several beeps will sound. This confirms that oil life system has been reset. If CHANGE OIL message comes after starting the engine, repeat reset procedure.



G00275761

Fig. 35: Identifying Instrument Cluster (2004 GMC Canyon)
Courtesy of GENERAL MOTORS CORP.

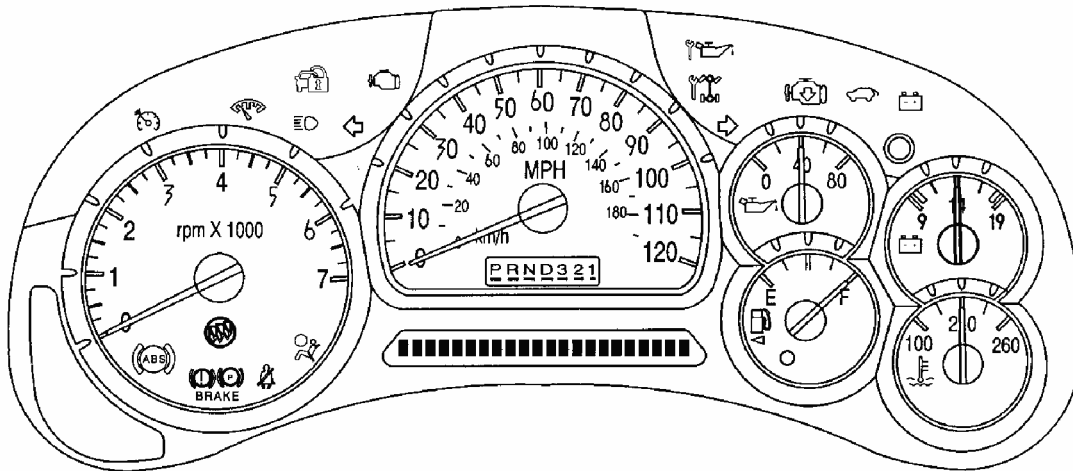
2004 GMC ENVOY XUV

The CHANGE ENG OIL message is displayed when its time to change engine oil, usually between 3000 and 7500 miles since last oil change. See **Fig. 36**. Under severe conditions, the indicator may come on before 3000 miles. The oil change interval is not based on mileage, but on engine revolutions and engine operating temperature.

Vehicle should not be driven more than 7500 miles or 12 months without an oil and oil filter change. System will not detect dust in the oil. So if vehicle is driven in a dusty area, be sure to change oil and oil filter every 3000 miles or sooner if CHANGE OIL SOON indicator comes on. Reset system when oil has been changed.

2002 Chevrolet Camaro

GENERAL INFORMATION Service Reminder Indicators - General Motors (Except Cadillac)



G00275754

Fig. 36: Identifying Instrument Panel Cluster
Courtesy of GENERAL MOTORS CORP.

Manually Resetting Oil Life System

To reset the oil life monitor, turn ignition switch to ON or RUN position with engine off. Depress accelerator pedal slowly to wide open throttle 3 times within 5 seconds. If CHANGE ENG OIL light flashes for 5 seconds, oil life monitor is reset. If the CHANGE ENG OIL light does not flash, oil life monitor has not reset. Repeat this step.

Reset Oil Life System Using Driver Information Center

If vehicle is equipped with a Driver Information Center (DIC), reset oil life monitor by pressing the Driver Information Center SELECT button for 5 seconds while ENGINE OIL LIFE is displayed.

2005-06 BUICK RAINIER

To reset the change engine oil light, do the following:

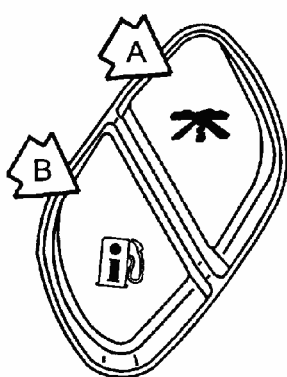
1. Turn the ignition key to RUN with the engine off.
2. Fully press and release the accelerator pedal slowly three times within five seconds.
3. Turn the key to LOCK.

If the change engine oil light comes back on when you start your vehicle, the engine oil life system has not reset. Repeat the procedure.

For vehicles with the Driver Information Center (DIC), see **Fig. 37** to identify DIC steering wheel buttons.

2002 Chevrolet Camaro

GENERAL INFORMATION Service Reminder Indicators - General Motors (Except Cadillac)



A (Trip Information)

Press this button to display the odometer, trip odometers, timer, and (if equipped) a tire pressure monitor and engine hours.

B (Fuel Information)

Press this button to display the current range, fuel used, average fuel economy, and engine oil life.

C (Customization)

Press this button to access the vehicle settings menu and customize the personal settings on your vehicle.

D (Select)

Press this button to reset certain DIC functions and set your customization settings.

Pressing any of the four DIC buttons will acknowledge DIC messages and clear them from the DIC display.

G00374418

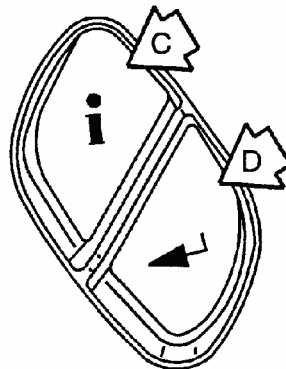


Fig. 37: Identifying Driver Information Center (DIC) Steering Wheel Buttons (Some 2005 Models)

Courtesy of GENERAL MOTORS CORP.

2005-07 BUICK RENDEZVOUS

If your vehicle does not have the optional Driver Information Center (DIC), do the following:

1. Turn the ignition to ON, with the engine off.
2. Fully press and release the accelerator pedal slowly three times within five seconds.
3. Turn the key to OFF. If the CHANGE ENGINE OIL message comes back on when you start your vehicle, the engine oil life system has not reset. Repeat the procedure.

If your vehicle has the optional DIC, do the following:

1. Turn the ignition to ON, with the engine off.
2. Press the MODE button until the DIC reads OIL LIFE LEFT/HOLD SET TO RESET.

2002 Chevrolet Camaro

GENERAL INFORMATION Service Reminder Indicators - General Motors (Except Cadillac)

3. Press and hold the SET button until 100% is displayed. You will hear three chimes and the CHANGE ENGINE OIL message will go off. Turn the key to OFF.

If the CHANGE ENGINE OIL message comes back on when you start your vehicle, the engine oil life system has not reset. Repeat the procedure.

2005-07 BUICK TERRAZA

1. With the ignition key in RUN but the engine off, repeatedly push the set/reset button until OIL is displayed on the Driver Information Center (DIC).
2. Once OIL is displayed, push and hold the set/reset button for five seconds. The number will disappear and be replaced by 100 (indicating 100% oil life remaining).
3. Turn the key to LOCK.

2005-06 CHEVROLET EQUINOX

1. Turn the ignition key to RUN with the engine off.
2. Fully press and release the accelerator pedal three times within five seconds. The change engine oil light will flash while the system is resetting.
3. Turn the key to LOCK.

2005-06 CHEVROLET EXPRESS, CUTAWAY & RV CUTAWAY

To reset the change engine oil light, do the following:

1. Turn the ignition key to RUN with the engine off.
2. Fully press and release the accelerator pedal slowly three times within five seconds.
3. If the Change Engine Oil light flashes for five seconds, the system is reset.
4. Turn the key to LOCK.

If the change engine oil light comes back on when you start your vehicle, the engine oil life system has not reset. Repeat the procedure. If it still does not reset, see your dealer for service.

2005-07 CHEVROLET SILVERADO & TRAILBLAZER

1. Turn ignition key to RUN position, with engine off.
2. Fully press and release the accelerator pedal slowly 3 times within 5 seconds. If the OIL LIFE RESET message flashes for 10 seconds, the system is resetting.
3. Turn the key to LOCK. If CHANGE ENGINE OIL message comes back after engine starts, repeat reset procedure.

2005-06 CHEVROLET SSR

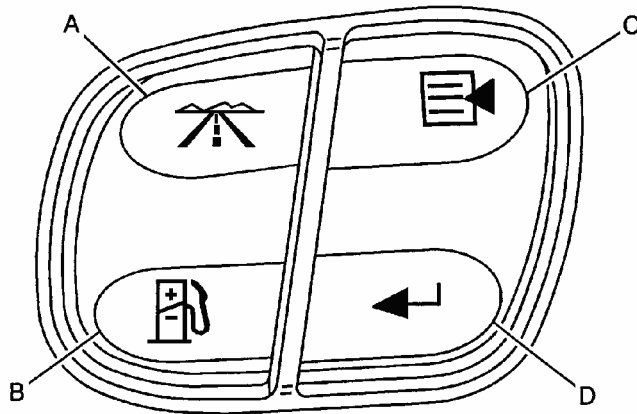
2002 Chevrolet Camaro

GENERAL INFORMATION Service Reminder Indicators - General Motors (Except Cadillac)

Always reset the engine oil life system to 100% after every oil change. It will not reset itself. To reset the change engine oil light, do the following:

1. Press the fuel information button until ENGINE OIL LIFE appears on the Driver Information Center (DIC). See .
2. Press and hold the select button. The engine oil life percentage will change to 100.
3. Turn the key to OFF.

If the change engine oil light comes back on when you start your vehicle, the engine oil life system has not reset. Repeat the procedure.



- A. *(Trip Information)* : Press this button to display the odometer, trip odometer, and the timer.
- B. *(Fuel Information)* : Press this button to display the current fuel and engine oil information.
- C. *(Personalization)* : Press this button to access the vehicle personalization menu and customize the personalization settings on your vehicle.
- D. *(Select)* : Press this button to reset certain DIC functions, acknowledge DIC warning messages and clear them from the DIC, and set your personalization settings.

G00374419

Fig. 38: Identifying DIC Steering Wheel Buttons (Chevrolet SSR)
Courtesy of GENERAL MOTORS CORP.

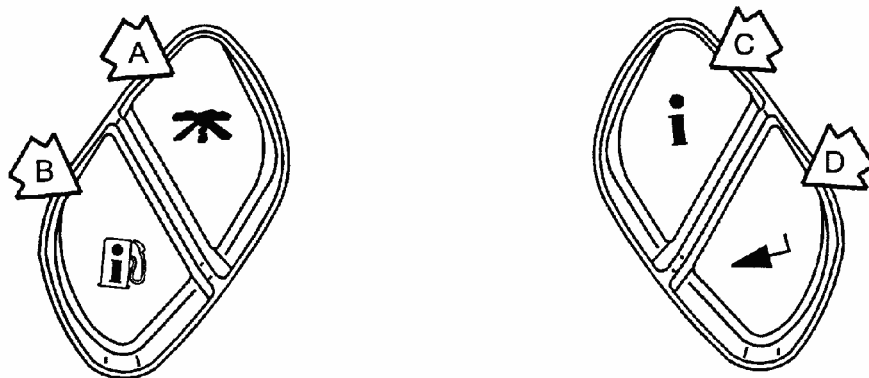
2005-06 CHEVROLET TRAILBLAZER

To reset the change engine oil light, do the following:

1. Turn the ignition key to RUN with the engine off.
2. Fully press and release the accelerator pedal slowly three times within five seconds.
3. Turn the key to LOCK.

If the change engine oil light comes back on when you start your vehicle, the engine oil life system has not reset. Repeat the procedure.

For vehicles with the Driver Information Center (DIC), see **Fig. 39** to identify DIC steering wheel buttons.



A (Trip Information)

Press this button to display the odometer, trip odometers, timer, and (if equipped) a tire pressure monitor and engine hours.

B (Fuel Information)

Press this button to display the current range, fuel used, average fuel economy, and engine oil life.

C (Customization)

Press this button to access the vehicle settings menu and customize the personal settings on your vehicle.

D (Select)

Press this button to reset certain DIC functions and set your customization settings.

Pressing any of the four DIC buttons will acknowledge DIC messages and clear them from the DIC display.

G00374418

Fig. 39: Identifying Driver Information Center (DIC) Steering Wheel Buttons (Some Models)

Courtesy of GENERAL MOTORS CORP.

2005-07 CHEVROLET UPLANDER

1. Turn ignition key to RUN position, with engine off. Repeatedly push the SET/RESET button until OIL is displayed on the Driver Information Center (DIC).
2. Once OIL is displayed, push and hold the SET/RESET button for 5 seconds. The number will disappear and be replaced by 100 (indicating 100% oil life remaining).
3. Turn key to LOCK position. If CHANGE OIL SOON message comes back after engine starts, repeat reset procedure.

2005-06 CHEVROLET VENTURE

1. With the ignition key in RUN but the engine off, repeatedly push the trip/reset button

2002 Chevrolet Camaro

GENERAL INFORMATION Service Reminder Indicators - General Motors (Except Cadillac)

until OIL is displayed on the Driver Information Center (DIC).

2. Once OIL is displayed, push and hold the trip/reset button for five seconds. The number will disappear and be replaced by 100 (indicating 100% oil life remaining).
3. Turn the key to OFF.

2005-06 GM C/K SERIES

On vehicles equipped with the DIC, use the fuel button to reach the ENGINE OIL LIFE screen and then press and hold the select button for five seconds while ENGINE OIL LIFE is displayed. See **Fig. 39**. OIL LIFE RESET will appear on the display for 10 seconds to let you know the system is reset.

On vehicles NOT equipped with the DIC, do the following:

1. Turn the ignition key to RUN with the engine off.
2. Fully press and release the accelerator pedal slowly three times within five seconds. If the OIL LIFE RESET message flashes for 10 seconds, the system is resetting.
3. Turn the key to LOCK.

If the CHANGE ENGINE OIL message comes back on when you start your vehicle, the engine oil life system has not reset. Repeat the procedure. If it still does not reset, see your dealer for service.

2005-06 GMC ENVOY, ENVOY XL & ENVOY XUV

To reset the change engine oil light, do the following:

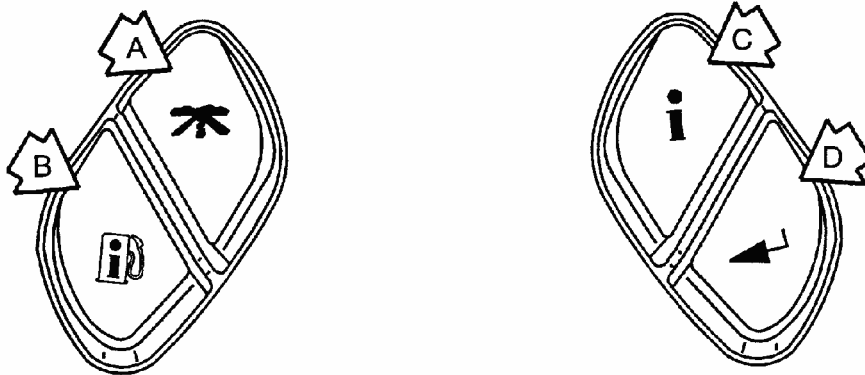
1. Turn the ignition key to RUN with the engine off.
2. Fully press and release the accelerator pedal slowly three times within five seconds.
3. Turn the key to LOCK.

If the change engine oil light comes back on when you start your vehicle, the engine oil life system has not reset. Repeat the procedure.

For vehicles with the Driver Information Center (DIC), see **Fig. 40** to identify DIC steering wheel buttons.

2002 Chevrolet Camaro

GENERAL INFORMATION Service Reminder Indicators - General Motors (Except Cadillac)



A (Trip Information)

Press this button to display the odometer, trip odometers, timer, and (if equipped) a tire pressure monitor and engine hours.

B (Fuel Information)

Press this button to display the current range, fuel used, average fuel economy, and engine oil life.

C (Customization)

Press this button to access the vehicle settings menu and customize the personal settings on your vehicle.

D (Select)

Press this button to reset certain DIC functions and set your customization settings.

Pressing any of the four DIC buttons will acknowledge DIC messages and clear them from the DIC display.

G00374418

Fig. 40: Identifying Driver Information Center (DIC) Steering Wheel Buttons (2005 Models)

Courtesy of GENERAL MOTORS CORP.

2005-07 GMC SAVANA, SAVANA CAMPER SPECIAL & SAVANA SPECIAL

To reset the change engine oil light, do the following:

1. Turn ignition to RUN position, with engine off.
2. Fully press and release accelerator pedal slowly 3 times within 5 seconds.
3. If the CHANGE ENGINE OIL light flashes for 5 seconds, the system is reset.
4. Turn the key to LOCK.

If the CHANGE ENGINE OIL light comes back on when you start your vehicle, the engine oil life system has not reset. Repeat reset procedure.

2005 PONTIAC AZTEK

If your vehicle does not have the optional Driver Information Center (DIC), do the

2002 Chevrolet Camaro

GENERAL INFORMATION Service Reminder Indicators - General Motors (Except Cadillac)

following:

1. Turn the ignition to ON, with the engine off.
2. Fully press and release the accelerator pedal slowly three times within five seconds.
3. Turn the key to OFF. If the CHANGE ENGINE OIL message comes back on when you start your vehicle, the engine oil life system has not reset. Repeat the procedure.

If your vehicle has the optional DIC, do the following:

1. Turn the ignition to ON, with the engine off.
2. Press the MODE button until the DIC reads OIL LIFE LEFT/HOLD SET TO RESET.
3. Press and hold the SET button until 100% is displayed. You will hear three chimes and the CHANGE ENGINE OIL message will go off. Turn the key to OFF.

If the CHANGE ENGINE OIL message comes back on when you start your vehicle, the engine oil life system has not reset. Repeat the procedure.

2005-06 PONTIAC MONTANA

1. With the ignition key in RUN but the engine off, repeatedly push the trip/reset button until OIL is displayed on the Driver Information Center (DIC).
2. Once OIL is displayed, push and hold the trip/reset button for five seconds. The number will disappear and be replaced by 100 (indicating 100% oil life remaining).
3. Turn the key to OFF.

2006-07 BUICK RAINIER

1. Turn the ignition to ON, with the engine off.
2. Fully press and release the accelerator pedal slowly three times within five seconds.
3. Turn the key to OFF. If the CHANGE ENGINE OIL message comes back on when you start your vehicle, the engine oil life system has not reset. Repeat the procedure.

2006-07 CHEVROLET AVALANCHE

After changing the engine oil, reset the system by performing the following steps:

1. Display OIL LIFE REMAINING on DIC.
2. Press hold the SET/RESET button on DIC or trip odometer stem (if not equipped with DIC) for at more than 5 seconds. The oil life will change to 100%.
3. Turn the key to OFF. If the light or message comes back on when you start your vehicle, the oil life system has not reset. Repeat the procedure.

2006-07 CHEVROLET HHR

2002 Chevrolet Camaro

GENERAL INFORMATION Service Reminder Indicators - General Motors (Except Cadillac)

1. Turn the ignition to RUN position, with engine off.
2. Press INFORMATION and RESET buttons on the DIC at the same time to enter personalization menu.
3. Press INFORMATION button to scroll through the available personalization menu modes until the DIC display shows OIL LIFE RESET.
4. Press and hold RESET button until the DIC display shows ACKNOWLEDGED. This indicates that system has been reset.
5. Turn ignition off. If CHANGE OIL SOON message comes back when engine is started, repeat reset procedure.

2006-07 GMC YUKON DENALI & YUKON XL DENALI

1. Turn ignition key to RUN position, with engine off. Display the OIL LIFE REMAINING on the DIC.
2. Press and hold the SET/RESET button on DIC for more than 5 seconds. The oil life will change to 100%.
3. Turn ignition off. If the CHANGE ENGINE OIL SOON message comes back on when engine is started, repeat reset procedure.

2006-07 PONTIAC TORRENT

1. Turn ignition to RUN position, with engine off.
2. Fully press and release the accelerator pedal slowly 3 times within 5 seconds. The CHANGE ENGINE OIL light will flash while system is resetting.
3. When light stops flashing, turn the key to LOCK position. If the light or message comes back on when engine is started, the engine oil life system has not reset. Repeat reset procedure.

2007 CHEVROLET EQUINOX

1. Turn ignition ON, with engine off.
2. Fully press and release the accelerator pedal slowly 3 times within 5 seconds. The CHANGE OIL LIGHT will flash while system is resetting.
3. When light stops flashing, turn key to LOCK. If the CHANGE ENGINE OIL message comes back on when you start the engine, repeat the reset procedure.

2007 CHEVROLET SUBURBAN

1. Turn ignition ON, with engine off. Display OIL LIFE REMAINING on DIC
2. Press and hold SET/RESET button on DIC or trip odometer reset stem (if not equipped with DIC) for more than 5 seconds. The oil life should change to 100%. Turn ignition off. If CHANGE ENGINE OIL SOON message comes back after starting engine, repeat reset procedure.

2002 Chevrolet Camaro

GENERAL INFORMATION Service Reminder Indicators - General Motors (Except Cadillac)

2007 GMC ACADIA

1. Turn ignition ON, with engine off.
2. Fully press and release the accelerator pedal slowly 3 times within 5 seconds. The CHANGE OIL LIGHT will flash while system is resetting.
3. When light stops flashing, turn key OFF. If the CHANGE ENGINE OIL SOON message comes back on when you start the engine, repeat the reset procedure.

2007 GMC ENVOY & ENVOY DENALI

1. Turn ignition key to RUN position, with engine off.
2. Fully press and release the accelerator pedal slowly 3 times within 5 seconds. The CHANGE OIL LIGHT will flash while the system is resetting.
3. When light stops flashing, turn key to LOCK position. If light/message comes back when engine is started, repeat reset procedure.

2007 GMC SIERRA CLASSIC & SIERRA DENALI CLASSIC

1. Turn ignition key to RUN position, with engine off.
2. Fully press and release the accelerator pedal slowly 3 times within 5 seconds. If the OIL LIFE RESET message flashes for 10 seconds, the system is resetting.
3. Turn the key to LOCK. If CHANGE ENGINE OIL message comes back after engine starts, repeat reset procedure.

CHANGE TRNS FLUID NOW DISPLAY

1995-99 OLDSMOBILE AURORA

1. The Driver Information Center (DIC) displays estimated percentage of the remaining useful life of engine oil or transaxle fluid. When remaining oil or fluid life is 0 percent, the display will show CHANGE OIL NOW or CHANGE TRNS FLUID NOW. After changing engine oil or transaxle fluid, reset oil life display.
2. To reset the display, turn ignition on with engine off. Press ENG button to select the OIL LIFE or TRNS FLUID LIFE percentage display. Then, press and hold in RESET for at least 5 seconds.
3. The word RESET will appear. Then, OIL LIFE 100 or TRNS FLUID 100 will be displayed.

CHECK ENGINE LIGHT

1989-94 GEO TRACKER

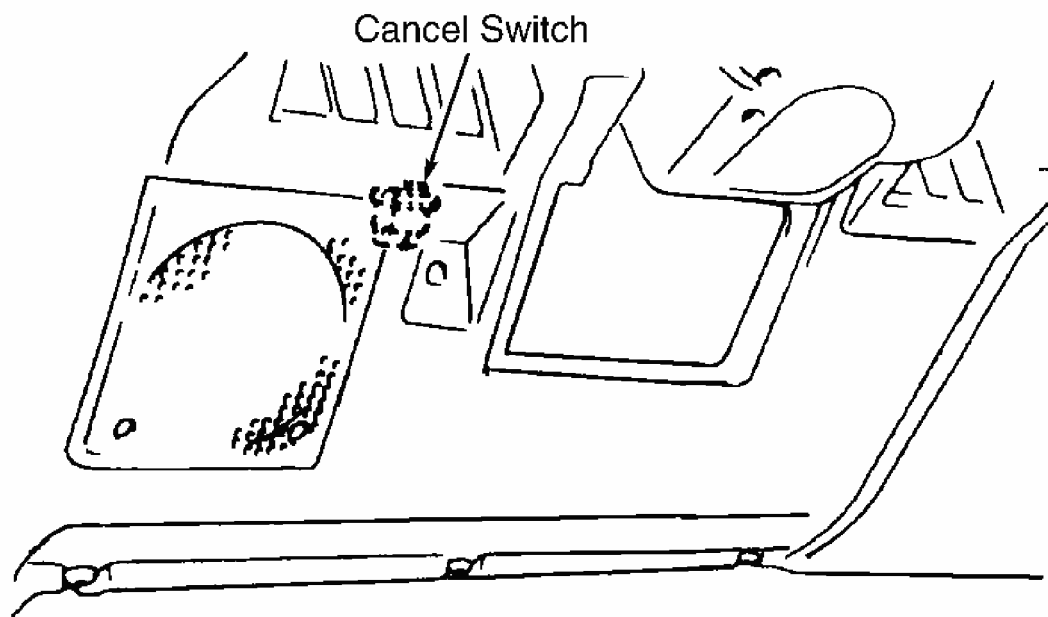
2002 Chevrolet Camaro

GENERAL INFORMATION Service Reminder Indicators - General Motors (Except Cadillac)

1. CHECK ENGINE light functions as a service reminder indicator and emission system service. CHECK ENGINE light will come on each 50,000 miles (PCV and EGR), each 80,000 miles (oxygen sensor) and each 100,000 miles (charcoal canister) to indicate needed emission system service.
2. After servicing and/or replacing components, reset CHECK ENGINE light by sliding cancel switch to its opposite position. See **LIGHT RESET SWITCH LOCATION (GEO TRACKER)** for switch location.

LIGHT RESET SWITCH LOCATION (GEO TRACKER)

Application	Location
1989-91	Behind Access Panel, Directly Below Steering Column
1992-94	(1) Behind Instrument Panel, Next To Left Speaker
(1) See Fig. 41 .	



G50F12299

Fig. 41: Light Reset Switch Location (1992-94 Geo Tracker - Federal)
Courtesy of GENERAL MOTORS CORP.

California

CHECK ENGINE light indicates when it is necessary to have emission system serviced, regardless of mileage. CHECK ENGINE light comes on briefly when starting as a bulb check. If light does not come on or stays on continually, repair as necessary.

FUEL FILTER LIFE RESET

2006 GM TRUCKS

This feature is available on vehicles with steering wheel controls. When fuel button is pressed and FUEL FILTER LIFE appears on the display, this information will give the percentage of fuel filter life remaining.

NOTE: Message will appear when a reset is performed either by using the steering wheel controls or the following manual procedure.

Reset Procedure

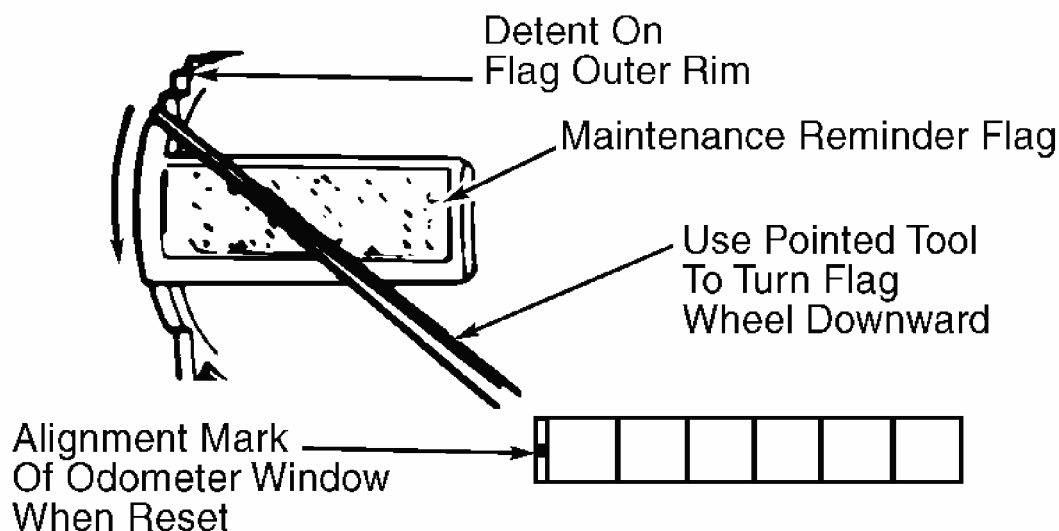
NOTE: For vehicles with steering wheel controls, press and hold the select button for 5 seconds while FUEL FILTER LIFE message is displayed. This message will appear on the DIC for 10 seconds. For vehicles without steering wheel controls, do the following:

1. Without pressing the pedals, turn ignition key to on position without starting engine. Wait 5 seconds.
2. Completely press brake and accelerator pedals simultaneously and hold for 10 seconds. The system is now reset.
3. Turn ignition key off. The next time engine is started, message will no longer be displayed. Always reset FUEL FILTER LIFE system after a fuel filter change.

OXYGEN SENSOR REMINDER FLAG

1980 MODELS

1. Every 30,000 miles, a reminder flag appears in speedometer face, indicating service of oxygen sensor is necessary. See **Fig. 42**. Inspect and service oxygen sensor as necessary and reset flag.
2. To reset flag, remove instrument panel trim plate. Remove instrument cluster lens. Using pointed tool, apply light downward pressure on notches of flag until it is reset. An alignment mark will appear in left center of odometer window when flag is fully reset.



95J14679

Fig. 42: Resetting Reminder Flag (1980 General Motors)
 Courtesy of GENERAL MOTORS CORP.

OXYGEN SENSOR WARNING LIGHT

1985-86 SPRINT

At 30,000 mile intervals, a SENSOR light in dash will start flashing, indicating oxygen sensor needs replacement. To reset mileage counter (after sensor replacement), locate SENSOR light cancel switch on right side of fuse box. Return cancel switch to OFF position. Start engine to ensure light remains off.

SERVICE REMINDER MESSAGE

1987-89 PONTIAC 6000 STE

The SERVICE REMINDER message light is used on models with a Driver Information Center (DIC). After performing necessary services, reset service reminder light.

To reset service reminder, push DIC button until desired service item is displayed. Press and hold down the DIC button. With button pressed, the distance display will decrease in increments of 500 miles. Release button when desired distance is displayed on the DIC.

1988-89 PONTIAC BONNEVILLE

The SERVICE REMINDER message light is used on models with a Driver Information Center (DIC). After performing necessary services, reset service reminder light.

2002 Chevrolet Camaro

GENERAL INFORMATION Service Reminder Indicators - General Motors (Except Cadillac)

To reset service reminder, push DIC button until desired service item is displayed. Press and hold down the DIC button. With button pressed, the distance display will decrease in increments of 500 miles. Release button when desired distance is displayed on the DIC.

1990-91 PONTIAC BONNEVILLE

1. The SERVICE REMINDER message light is used on models with a Driver Information Center (DIC). After performing necessary services, reset service reminder light.
2. To reset service reminder, push DIC button until service item preceding desired service item is displayed. Press and hold down the DIC button. This will advance display to desired service item and, with button pressed, the distance between service intervals will decrease in increments of 500 miles.
3. Release button when desired distance is displayed on the DIC. If the SERVICE REMINDER remains on after resetting, drive vehicle. Light should go out within 10 miles of driving.

TIRE PRESSURE MONITOR SYSTEM

1987-96 CHEVROLET CORVETTE

Tire Pressure Monitor Warning Indicators

NOTE: **The LOW TIRE PRESSURE warning light may come on if the vehicle is close to another vehicle that has a similar warning system and a low tire.**

When the LOW TIRE PRESSURE warning light illuminates, immediately check air pressure of all tires and adjust to the specified pressure. This warning light will remain illuminated until ignition is turned off, even if tires are inflated while vehicle is running. If SERVICE LTPWS warning light illuminates, there is a problem in the TPM system. See appropriate manufacturer service information.

1997 BUICK PARK AVENUE

CHECK TIRE PRESSURE or TIRE PRESSURE LOW message will come on the Driver Information Center (DIC) if air pressure in one tire is lower than the other 3 tires, if tires are rotated, if tire(s) are repaired or replaced, or if air pressure is adjusted. Message will stay on until system is recalibrated. Check and adjust air pressure in all 4 tires before recalibrating system.

1. To recalibrate the system, turn ignition on with engine off. On 1997-98 models, press the GAGES button on the Driver Information Center (DIC) until TIRE PRESSURE appears on the display. On 1999-2002 models, press the GAGE INFO button on the Driver Information Center (DIC) until TIRE PRESSURE appears on the display. On all models, press and hold the DIC RESET button for 5 seconds.

2002 Chevrolet Camaro

GENERAL INFORMATION Service Reminder Indicators - General Motors (Except Cadillac)

2. After 5 seconds the display will show TIRE PRESSURE RESET. After DIC RESET button is released, TIRE PRESSURE NORMAL will appear on display. If TIRE PRESSURE RESET does not appear on the display after 5 seconds, retry recalibration process. If after retrying recalibration process system still does not reset, repair system as necessary.

1997-2004 CHEVROLET CORVETTE

NOTE: If the wheels have been rotated, or tire pressure sensor or RCDLR is replaced, the TPM system needs to relearn tire pressure sensor IDs. See TIRE PRESSURE SENSOR RELEARN in appropriate manufacturer service information.

1997 PONTIAC GRAND PRIX

The vehicle must be driven 10-20 miles before the check tire pressure system will work properly. The CHECK TIRE PRESS light will come on if the pressure in one tire becomes at least 8 psi higher or lower than the other 3 tires. The check tire pressure won't turn on the light if more than one tire is low or high, or if the system is not calibrated properly.

The CHECK TIRE PRESS light will stay on until the ignition is turned off or the CALIBRATE TIRE PRESS button is pushed (located under the dash). Don't press the CALIBRATE TIRE PRESS button without first correcting the cause of the problem by adjusting tire pressure in all 4 tires. If the CALIBRATE TIRE PRESS button is pressed while tire pressures are incorrect, the system will not work properly and may not alert the driver when a tire is low.

1. If the Electronic Brake Control Module (EBCM) detects a tire with low pressure, it signals the Driver Information Center (DIC) to turn on the CHECK TIRE PRESSURE light. To reset the display, turn ignition on with engine off.
2. Press and hold calibrate tire pressure button for about 3 seconds. Button is under lower left part of instrument panel, to right of steering column. CHECK TIRE PRESSURE light will flash 3 times and go out.

1998-05 LESABRE & PARK AVENUE

NOTE: When a spare tire is mounted, a wheel is replaced or rotated, or tire pressure has been adjusted, TPM system will need to be recalibrated. See TIRE PRESSURE SENSOR RELEARN in appropriate manufacturer service information.

1999-2002 BUICK CENTURY & REGAL

The LOW TIRE light will come on if air pressure in one tire drops to 12 psi less than the

2002 Chevrolet Camaro

GENERAL INFORMATION Service Reminder Indicators - General Motors (Except Cadillac)

other 3 tires, if tires are rotated, if tire(s) are repaired or replaced, if air pressure is adjusted or if battery is disconnected. Light will stay on until ignition is turned off or RESET button is pressed. Check and adjust air pressure in all 4 tires before resetting system.

1. To reset system, turn ignition switch to ON (or RUN) position, with engine off. Press and hold Red RESET button for about 5 seconds. RESET button is located in instrument panel fuse block. Fuse block is located under cover at end of passenger's side of dash. Reset button is first button in top row of fuse block.
2. When system is reset, LOW TIRE light will come on, flash 3 times, and go off. If light does not turn off, repeat step 1. If light will not turn off, repair system as necessary.

1999-2001 OLDSMOBILE ALERO

CHECK TIRE PRESSURE light comes on if air pressure in one tire drops to 12 psi (kPa) less than the other 3 tires, if tires are rotated, if tire(s) are repaired or replaced, or if air pressure is adjusted. Light will stay on until ignition is turned off or RESET button is pressed. Check and adjust air pressure in all 4 tires before resetting system.

1. To reset tire inflation monitor, turn ignition switch on, with engine off. Press and release the RESET button. RESET button is located inside of driver's side instrument panel fuse panel. The CHANGE OIL indicator light will begin to flash.
2. Press and release the RESET button again. The CHANGE OIL indicator light will turn off, and the CHECK TIRE PRESSURE indicator light will begin to flash. While the CHECK TIRE PRESSURE indicator light is flashing, press and hold the RESET button until the chime sounds indicating system is reset. If CHECK TIRE PRESSURE light does not go out, repeat reset procedure. If system still will not reset, repair system as necessary.

1999-2002 PONTIAC GRAND AM

CHECK TIRE PRESSURE light comes on if air pressure in one tire drops to 12 psi (kPa) less than the other 3 tires, if tires are rotated, if tire(s) are repaired or replaced, or if air pressure is adjusted. Light will stay on until ignition is turned off or RESET button is pressed. Check and adjust air pressure in all 4 tires before resetting system.

1. To reset tire inflation monitor, turn ignition switch on, with engine off. Press and release the RESET button. RESET button is located inside of driver's side instrument panel fuse panel. The CHANGE OIL indicator light will begin to flash.
2. Press and release the RESET button again. The CHANGE OIL indicator light will turn off, and the CHECK TIRE PRESSURE indicator light will begin to flash. While the CHECK TIRE PRESSURE indicator light is flashing, press and hold the RESET button until the chime sounds indicating system is reset. If CHECK TIRE PRESSURE light does not go out, repeat reset procedure. If system still will not reset, repair system as necessary.

2000-05 CHEVROLET IMPALA & MONTE CARLO

NOTE: When a wheel is replaced or rotated, tire pressure has been adjusted, or vehicle's battery has been disconnected, TPM system will need to be recalibrated. See **TIRE PRESSURE SENSOR RELEARN** in appropriate manufacturer service information.

2000-05 PONTIAC BONNEVILLE

CHECK TIRE PRESSURE or TIRE PRESS message will come on if air pressure in one tire is lower than the other 3 tires, if tires are rotated, if tire(s) are repaired or replaced, or if air pressure is adjusted. Message will stay on until system is recalibrated. Check and adjust air pressure in all 4 tires before recalibrating system.

1. If vehicle is equipped with Systems Monitor, go to step 2. To recalibrate vehicle equipped with Driver Information Center (DIC), turn ignition on with engine off. Using the MODE and SELECT button on DIC, change display until TIRE PRESSURE appears. Press and hold RESET button for 5 seconds. TIRE PRESSURE RESET should now appear on display. If TIRE PRESSURE RESET does not appear on display after 5 seconds, repair system as necessary. Using a scan tool, clear TPM DTC.
2. To recalibrate vehicle equipped with Systems Monitor, turn ignition on with engine off. Press and hold TIRE PRESS RESET button for 5 seconds. TIRE PRESS light on the Systems Monitor should begin to flash. Release the TIRE PRESS RESET button. TIRE PRESS light should go out and system is now reset. If TIRE PRESS light does not begin to flash after 5 seconds, repair system as necessary. Using a scan tool, clear TPM DTC.

2001-03 CHEVROLET CORVETTE

NOTE: When the wheels have been rotated or a tire pressure sensor has been replaced, retrain tire pressure sensor. See **TIRE PRESSURE SENSOR RELEARN** in appropriate manufacturer service information.

2001-03 OLDSMOBILE AURORA

The Tire Pressure Monitor (TPM) system alerts the driver when a large change in the pressure of one tire exists, while the vehicle is being driven. The TPM system uses the Electronic Brake Control Module (EBCM), ABS wheel speed sensor inputs, class 2 serial data circuit, and the Driver Information Center (DIC) to perform the system functions. The EBCM contains software to calculate relative tire pressure differences. The software requires approximately 30 minutes of straight line driving in 3 different speed ranges to complete the calibration process to have full capability for detecting a tire pressure condition. The speed

2002 Chevrolet Camaro

GENERAL INFORMATION Service Reminder Indicators - General Motors (Except Cadillac)

ranges are 15-40 MPH, 40-70 MPH and 70-90 MPH.

1. LOW TIRE PRESSURE light comes on if air pressure in one tire is lower than the other 3 tires, if tires are rotated, if tire(s) are repaired or replaced, or if tire pressure is adjusted. Light will stay on until ignition is turned off, or system is reset. Check and adjust air pressure in all 4 tires before resetting system.
2. To reset system, turn ignition on with the engine off. Press SELECT right arrow button on Driver Information Center (DIC) until GAGE mode is entered. Press the SELECT down arrow until TIRE PRESSURE is displayed.
3. Press and hold the DIC RESET button for 5 seconds. After 5 seconds, TIRE PRESSURE RESET should appear on display. After releasing the DIC RESET button, TIRE PRESSURE NORMAL should appear on display. System is now reset. Using a scan tool, clear the TPM DTC.
4. If TIRE PRESSURE RESET does not appear on display, repeat reset procedures. If system does not reset after trying reset procedures again, repair system as necessary.

2002-03 BUICK LESABRE

CHECK TIRE PRESSURE message will come on if air pressure in one tire is lower than the other 3 tires, if tires are rotated, if tire(s) are repaired or replaced, or if air pressure is adjusted. Message will stay on until system is recalibrated. Check and adjust air pressure in all 4 tires before recalibrating system.

1. To recalibrate the system, turn ignition on with engine off. On 2000 models, press the GAGES button on the Driver Information Center (DIC) until TIRE PRESSURE appears on the display. On 2001-2003 models, press the GAGE INFO button on the Driver Information Center (DIC) until TIRE PRESSURE appears on the display. On all models, press and hold the DIC RESET button for 5 seconds.
2. After 5 seconds, the display will show TIRE PRESSURE RESET. After DIC RESET button is released, TIRE PRESSURE NORMAL will appear on display. If TIRE PRESSURE RESET does not appear on the display after 5 seconds, retry recalibration process. If system does not reset after trying recalibration procedures again, repair system as necessary.

2002 CHEVROLET IMPALA & MONTE CARLO

LOW TIRE PRESSURE light comes on if air pressure in one tire drops to 12 psi (kPa) less than the other 3 tires, if tires are rotated, if tire(s) are repaired or replaced, if air pressure is adjusted or when vehicle battery is disconnected. Light will stay on until ignition is turned off or RESET button is pressed. Check and adjust air pressure in all 4 tires before resetting system.

1. There are 2 ways to reset the tire inflation monitor. To reset the tire inflation monitor using the exterior or interior lamp controls, go to step 4. To reset tire inflation monitor

2002 Chevrolet Camaro

GENERAL INFORMATION Service Reminder Indicators - General Motors (Except Cadillac)

using the radio, turn the radio off. Turn ignition to ACC or ON, with the engine off. Press and hold the TUNE DISP button on the radio for at least 5 seconds until settings is displayed.

2. On Impala, press the SEEK PTYPE up or down arrow to scroll through the main menu. On Monte Carlo, press the SEEK PSCAN up or down arrow to scroll through the main menu. On all models, scroll until TIRE MON appears on the display. Press the 1 PREV or 2 NEXT button to enter the sub-menu. RESET will be displayed.
3. Press the TUNE DISP button to reset. A chime will sound to verify the new setting and DONE will be displayed for one second. Once the message has been reset, scroll through the menu until EXIT appears on the display. Press the TUNE DISP button to exit the program. A chime will sound to verify the exit.
4. On Impala, to reset the tire inflation monitor using the interior lamp controls, turn the interior lamp controls from OFF to ON position 3 times with ignition switch in ON position. On Monte Carlo, to reset the tire inflation monitor using the exterior lamp controls, turn exterior lamp controls from OFF to parking lamps 3 times with ignition switch in ON position.

2002 OLDSMOBILE ALERO

The Tire Pressure Monitor (TPM) system alerts the driver when a large change in the pressure of one tire exists, while the vehicle is being driven. The TPM system uses the Electronic Brake Control Module (EBCM), ABS wheel speed sensor inputs, class 2 serial data circuit, and the Driver Information Center (DIC) to perform the system functions. The EBCM contains software to calculate relative tire pressure differences. The software requires approximately 30 minutes of straight line driving in 3 different speed ranges to complete the calibration process to have full capability for detecting a tire pressure condition. The speed ranges are 15-40 MPH, 40-70 MPH and 70-90 MPH.

1. LOW TIRE PRESSURE light comes on if air pressure in one tire drops to 12 psi less than the other 3 tires, if tires are rotated, if tire(s) are repaired or replaced, if air pressure is adjusted or if vehicle battery is disconnected. Light will stay on until ignition is turned off or RESET button is pressed. Check and adjust air pressure in all 4 tires before resetting system.
2. To reset tire inflation monitor, turn ignition switch on, with engine off. Press and release the RESET button. RESET button is located inside of driver's side instrument panel fuse block (left end of instrument panel). The CHANGE OIL indicator light will begin to flash.
3. Press and release the RESET button again. The CHANGE OIL indicator light will turn off, and the LOW TIRE PRESSURE indicator light will begin to flash. While the LOW TIRE PRESSURE indicator light is flashing, press and hold the RESET button until the chime sounds indicating system is reset. If the LOW TIRE PRESSURE indicator light does not go out, repeat reset procedure. If system still will not reset, repair system as necessary.

2002 PONTIAC GRAND AM

The Tire Pressure Monitor (TPM) system alerts the driver when a large change in the pressure of one tire exists, while the vehicle is being driven. The TPM system uses the Electronic Brake Control Module (EBCM), ABS wheel speed sensor inputs, class 2 serial data circuit, and the Driver Information Center (DIC) to perform the system functions. The EBCM contains software to calculate relative tire pressure differences. The software requires approximately 30 minutes of straight line driving in 3 different speed ranges to complete the calibration process to have full capability for detecting a tire pressure condition. The speed ranges are 15-40 MPH, 40-70 MPH and 70-90 MPH.

1. LOW TIRE PRESSURE light comes on if air pressure in one tire drops to 12 psi less than the other 3 tires, if tires are rotated, if tire(s) are repaired or replaced, if air pressure is adjusted or if vehicle battery is disconnected. Light will stay on until ignition is turned off or RESET button is pressed. Check and adjust air pressure in all 4 tires before resetting system.
2. To reset tire inflation monitor, turn ignition switch on, with engine off. Press and release the RESET button. RESET button is located inside of driver's side instrument panel fuse block (left end of instrument panel). The CHANGE OIL indicator light will begin to flash.
3. Press and release the RESET button again. The CHANGE OIL indicator light will turn off, and the LOW TIRE PRESSURE indicator light will begin to flash. While the LOW TIRE PRESSURE indicator light is flashing, press and hold the RESET button until the chime sounds indicating system is reset. If the LOW TIRE PRESSURE indicator light does not go out, repeat reset procedure. If system still will not reset, repair system as necessary.

2003-04 BUICK CENTURY & REGAL**Using Reset Button**

1. Adjust all tire pressures to the recommended Psi (kPa). See vehicles Loading Information Label for recommended tire pressure. The label is attached to the center pillar, near the driver's door latch. Turn ON ignition, with engine OFF.
2. Press and hold the red RESET button located in the passenger side instrument panel fuse block.
3. The LOW TIRE indicator will flash 3 times, then turn off.
4. Use the scan tool in order to clear the TPM DTC.

Using Scan Tool

1. Adjust all tire pressures to the recommended Psi (kPa). See vehicles Loading Information Label for recommended tire pressure. The label is attached to the center pillar, near the driver's door latch. Turn ON ignition, with engine OFF.

2002 Chevrolet Camaro

GENERAL INFORMATION Service Reminder Indicators - General Motors (Except Cadillac)

2. Install scan tool. Turn ON ignition, with engine OFF.
3. With scan tool, select Special Functions.
4. Select TIM Reset.
5. Press Reset soft key.
6. LOW TIRE indicator will flash 3 times, then turn OFF.
7. Use scan tool in order to clear the TPM DTC.

2003-04 BUICK PARK AVENUE

There are 2 ways to reset the Tire Pressure Monitor (TPM) system. After resetting, TPM system requires up to 30 minutes of straight line driving in each of the 3 speed ranges to complete the calibration process. The speed ranges are 15-40 MPH, 40-70 MPH, and 70-90 MPH.

Using Driver Information Center

1. Adjust all tire pressures to the recommended Psi (kPa). See vehicles Tire Placard for tire pressures. Tire Placard is permanently located on the edge of the driver's door.
2. Turn ON ignition, with engine off.
3. Press GAGE INFO button until TIRE PRESSURE is displayed.
4. Press and hold RESET button until TIRE PRESSURE RESET is displayed.
5. Release RESET button, TIRE PRESSURE NORMAL is displayed.
6. Use scan tool in order to clear the TPM DTC.

Using Scan Tool

1. Adjust all tire pressures to the recommended Psi (kPa). See vehicles Tire Placard for tire pressures. Tire Placard is permanently located on the edge of the driver's door.
2. Install a scan tool. Turn ON ignition, with engine off.
3. With scan tool, select Special Functions.
4. Select Tire Pressure Reset.
5. Press Reset soft key and TIRE PRESSURE NORMAL is displayed on the DIC.
6. Use scan tool in order to clear the TPM DTC.

2003-07 BUICK RENDEZVOUS

NOTE: When a spare tire is mounted, a wheel is replaced or rotated, or tire pressure has been adjusted, TPM system will need to be recalibrated.

CAUTION: DO NOT recalibrate TPM system until all problems are fixed

and tire pressure in all 4 tires has been adjusted. If recalibration is done when tire pressures are incorrect, TPM system will not work properly and may not set an alert when a tire pressure is low or high.

1. Turn ignition switch to OFF position.
2. Ensure all tire pressures are adjusted to the pressure recommended on tire pressure label.
3. Turn ignition switch to ON position, with engine off.
4. Press and hold the MODE button until DIC display reads "LOW TIRE PRESSURE HOLD SET TO RESET".
5. Press and hold SET button until a chime sounds and "TIRE PRESSURE RESET" is displayed.
6. System will now sound a chime 3 times, and DIC will display "TIRE PRESSURE NORMAL".

NOTE: If low tire pressure warning message is still set, TPM system has not reset. Repeat procedure.

7. After resetting, the TPM system requires up to 5 miles (8 km) of flat, smooth road, straight line driving in each of the 4 speed ranges (about 10-20 minutes in each range) to complete the calibration process:
 - 19-40 MPH (31-65 KM/H).
 - 40-59 MPH (65-95 KM/H).
 - 59-74.5 MPH (95-120 KM/H).
 - 74.5-90 MPH (120-145 KM/H).

NOTE: The EBCM learns tire pressure calibration for each speed range independently. In Calibration Mode, EBCM has only partially learned tire pressure calibration for speed range and has limited detection capability for a tire pressure condition. In Detection Mode, EBCM has fully learned tire pressure calibration for speed range and has full detection capability for a tire pressure condition.

NOTE: Learning process does not need to be completed during a single trip.

2002 Chevrolet Camaro

GENERAL INFORMATION Service Reminder Indicators - General Motors (Except Cadillac)

1. There are 3 different ways to reset the TPM system. If using the exterior lamp switch, go to next step. If using the RDS radio, go to step 3. If using a scan tool, go to step 6.
2. Adjust all tire pressures to the recommended Psi (kPa). Refer to tire placard located on the inside of the rear trunk lid. Turn ignition ON, with engine OFF. Cycle exterior lamp switch from OFF to parking lamps 3 times within 5 seconds. Using scan tool, clear the TPM DTC.
3. Adjust all tire pressures to the recommended Psi (kPa). Refer to tire placard located on the inside of the rear trunk lid. Turn ignition to ACC or ON, with engine OFF. Turn radio OFF.
4. Press and hold the DISP button until SETTINGS is displayed. Press SEEK up or down arrows until TIRE MON is displayed. Press the PREV or NEXT button to enter the sub-menu. RESET will be displayed.
5. Press the DISP button, a chime will sound and DONE will be displayed. Scroll until EXIT is displayed. Press the DISP button to exit the TPM reset mode. A chime will sound to verify exit. Using scan tool, clear TPM DTC.
6. Adjust all tire pressures to the recommended Psi (kPa). Refer to tire placard located on the inside of the rear trunk lid. Install the scan tool.
7. Turn ignition ON, with engine OFF. With the scan tool select SPECIAL FUNCTIONS. Select TIM Reset. Press the RESET soft key. Using scan tool, clear TPM DTC.

2003-05 PONTIAC AZTEK

1. Check and adjust air pressure in all 4 tires before resetting system. Refer to tire placard located on the inside edge of the driver's door. Turn ignition ON, with engine off.
2. Press the MODE button on the Driver Information System until LOW TIRE PRESSURE HOLD SET TO RESET is displayed.
3. Press and hold the SET button until a chime sounds and TIRE PRESSURE RESET is displayed and a chime sounds 3 times.
4. Release the SET button and TIRE PRESSURE NORMAL will be displayed.

2004 BUICK LESABRE

There are 2 ways to reset the Tire Pressure Monitor (TPM) system. After resetting, TPM system requires up to 30 minutes of straight line driving in each of the 3 speed ranges to complete the calibration process. The speed ranges are 15-40 MPH, 40-70 MPH, and 70-90 MPH.

Using Driver Information Center

1. Adjust all tire pressures to the recommended Psi (kPa). See vehicles Tire Placard for tire pressures. Tire Placard is permanently located on the edge of the driver's door.
2. Turn ON ignition, with engine off.

2002 Chevrolet Camaro

GENERAL INFORMATION Service Reminder Indicators - General Motors (Except Cadillac)

3. Press GAGE INFO button until TIRE PRESSURE is displayed.
4. Press and hold RESET button until TIRE PRESSURE RESET is displayed.
5. Release RESET button, TIRE PRESSURE NORMAL is displayed.
6. Use scan tool in order to clear the TPM DTC.

Using Scan Tool

1. Adjust all tire pressures to the recommended Psi (kPa). See vehicles Tire Placard for tire pressures. Tire Placard is permanently located on the edge of the driver's door.
2. Install a scan tool. Turn ON ignition, with engine off.
3. With scan tool, select Special Functions.
4. Select Tire Pressure Reset.
5. Press Reset soft key and TIRE PRESSURE NORMAL is displayed on the DIC.
6. Use scan tool in order to clear the TPM DTC.

2004-06 CHEVROLET AVALANCHE, SILVERADO, SUBURBAN & TAHOE

NOTE: When the wheels have been rotated, or a tire pressure sensor or PDM/RCDLR has been replaced, retrain tire pressure sensor. See TIRE PRESSURE SENSOR RELEARN in appropriate manufacturer service information.

2004 CHEVROLET CORVETTE

1. Turn ON ignition, with engine OFF. Press DIC RESET button in order to clear any warning messages.
2. Press and release OPTIONS button until display is blank.
3. Press and hold RESET button for 3 seconds.

NOTE: If the DIC does not display TIRE TRAINING message, ensure TPM option is enabled in the RCDLR. Check TPM option and Set Options/TPM. The scan tool can be used to enable, or disable TPM option in the RCDLR. Check TPM DTC display and Set Options/TPM DTC. The scan tool can be used to enable or disable TPM DTC displaying option on the DIC.

4. Press and release OPTIONS button until TIRE TRAINING is displayed.
5. Press and release RESET button and LEARN L FRONT TIRE is displayed, verifying learn mode has been enabled.

NOTE: If a horn chirp does not sound after 15 seconds, remove then reinstall sensor activating tool.

2002 Chevrolet Camaro

GENERAL INFORMATION Service Reminder Indicators - General Motors (Except Cadillac)

6. Starting at left front sensor, hold Tire Pressure Sensor Activating Tool (J-41760) over valve stem until a horn chirp sounds.
7. After horn chirp sounds, proceed as in step 6 for the next 3 sensors in the following order of right front, right rear and left rear.
8. Turn ignition OFF to exit learn mode.

2004 CHEVROLET AVALANCHE, SUBURBAN & TAHOE

NOTE: If the wheels have been rotated, or tire pressure sensor or RCDLR is replaced, the TPM system needs to relearn tire pressure sensor IDs. See TIRE PRESSURE SENSOR RELEARN in appropriate manufacturer service information.

2004-07 GMC SIERRA & YUKON

NOTE: When the wheels have been rotated, or a tire pressure sensor or PDM/RCDLR has been replaced, retrain tire pressure sensor.

The TPM system will cancel the learn mode if more than 2 minutes have passed and no sensors have been learned, or if the system has been in learn mode for more than 5 minutes. If the learn mode is canceled before any sensor has been learned, the PDM/RCDLR will remember all current sensor IDs and their locations. As soon as the first sensor ID code is learned, all other IDs are erased from the PDM/RCDLR's memory. On models that display the individual tire pressure on DIC, updated tire pressures will not be displayed until PDM/RCDLR receives 2 more valid transmissions from each sensor. After performing the procedure below, always test drive the vehicle above 25 mph for at least 2 minutes before viewing tire pressures on DIC.

NOTE: Before proceeding with the steps below, ensure that no other sensor learn procedure is being performed simultaneously, or that tire pressures are not being adjusted on a TPM equipped vehicle within close proximity.

NOTE: In the following procedure, a TPM Sensor Activation Tool (J-46079) may be used in place of increasing/decreasing pressures to enable sensor. To use, place activator antenna against the tire sidewall close to the wheel rim at the valve stem location, then press and release the **ACTIVATE** button.

NOTE: If TPM Sensor Activation Tool (J-46079) is used, and vehicle is having trouble entering relearn mode, check batteries in activation tool. Low batteries may allow some functions to work, but not allow vehicle to perform learn function. When the internal

battery is fresh (fully charged), the indicator is "full" or all dark. When the battery is depleted, the indicator shows "empty" or all light.

1. Turn ignition switch to ON position, with engine off. Apply parking brake.

NOTE: If learn mode cannot be enabled, TPM system is not enabled in PDM/RCDLR. See appropriate manufacturer service information.

2. Turn headlight switch from OFF to parking lamps 4 times within 4 seconds. A double horn chirp will sound and the low tire pressure indicator will begin to flash indicating the learn mode has been enabled (the low tire pressure indicator should continue flashing throughout the matching procedure, and "SERVICE TIRE MONITOR" message will be displayed on the DIC).

WARNING: Overinflating tires may cause personal injury or damage to the tires and wheels. When increasing tire pressure, do not exceed the maximum inflation pressure as noted on the tire sidewall.

NOTE: If a horn chirp does not sound after 35 seconds for any of the 4 sensors, turn ignition switch to OFF position to exit the learn mode. Repeat procedure from step 1.

3. Starting with left front tire, increase or decrease the pressure for 8-10 seconds, or until a horn chirp sounds. Horn chirp may occur before the 8-10 second pressure increase/decrease time period has been reached, or up to 30 seconds after the 8-10 second pressure increase/decrease time period has been reached.
4. After horn chirp has sounded, proceed as in step 3 for the next 3 sensors in the following order: right front, right rear and left rear.
5. After left rear sensor has been learned, check to see if the low tire pressure indicator is still flashing. If it is, turn ignition switch to OFF position to exit relearn procedure. Adjust all tire pressures to specification. If the low tire pressure indicator is not flashing, repeat procedure from step 1.
6. The DIC may list all 4 of the tire pressures at 0 psi after tire pressure sensor relearn procedure has been performed (although PDM/RCDLR reads correct learn value of the tires). To complete the relearn procedure, drive the vehicle at highway speeds for 5 minutes.

2004 GMC YUKON & YUKON XL

NOTE: When the wheels have been rotated or a tire pressure sensor has

been replaced, retrain tire pressure sensor. See TIRE PRESSURE SENSOR RELEARN in appropriate manufacturer service information.

2004 PONTIAC BONNEVILLE

There are 3 ways to reset the Tire Pressure Monitor (TPM) system. After resetting, TPM system requires up to 30 minutes of straight line driving in each of the 3 speed ranges to complete the calibration process. The speed ranges are 15-40 MPH, 40-70 MPH, and 70-90 MPH.

Using Systems Monitor

1. Set all tire pressures to the recommended Psi (kPa). See vehicles Tire Placard for tire pressures. Tire placard is located on the inside of the rear compartment lid.
2. Turn ON ignition, with engine OFF.
3. Press and hold TIRE PRESS RESET button until the TIRE PRESS indicator begins to flash.
4. Release TIRE PRESS RESET button and the TIRE PRESS indicator will turn off.
5. Use scan tool in order to clear the TPM DTC.

Using Driver Information Center (If Equipped)

1. Set all tire pressures to the recommended Psi (kPa). See vehicles Tire Placard for tire pressures. Tire placard is located on the inside of the rear compartment lid.
2. Turn ON ignition, with engine OFF.
3. Press MODE button until TIRE PRESSURE is displayed.
4. Press and hold RESET button until TIRE PRESSURE RESET is displayed.
5. Release RESET button, TIRE PRESSURE NORMAL is displayed.
6. Use scan tool in order to clear the TPM DTC.

Using Scan Tool

1. Set all tire pressures to the recommended Psi (kPa). See vehicles Tire Placard for tire pressures. Tire placard is located on the inside of the rear compartment lid.
2. Install a scan tool. Turn ON ignition, with engine OFF.
3. With scan tool select Special Functions.
4. Select Tire Pressure Reset.
5. Press Reset soft key.
6. TIRE PRESS indicator will turn off on the Systems Monitor, or TIRE PRESSURE NORMAL is displayed on the DIC, if equipped.
7. Use scan tool in order to clear the TPM DTC.

2004-07 PONTIAC GRAND PRIX

NOTE: After resetting, the TPM system requires up to 5 miles of flat, smooth road straight line driving in each of the 4 speed ranges to complete the calibration process. The speed ranges are 19-40 MPH, 40-59 MPH, 59-74.5 MPH and 74.5-90 MPH.

1. Set all tire pressures to recommended Psi (kPa), see vehicles Tire Placard located on edge of driver's door.
2. Turn ON ignition, with engine OFF.
3. Press vehicle information button until TIRE INFLATION MONITOR SYSTEM PRESS (down/left arrow) SWITCH TO RESET is displayed.
4. If the system is being reset due to a low tire pressure condition, press and hold down/left arrow button until TIRE INFLATION MONITOR SYSTEM HAS BEEN RESET is displayed. If the system is being reset due to a tire rotation, press and hold down/left arrow button for 5 seconds.
5. Release down/left arrow button and TIRE PRESSURE NORMAL is displayed.

2005 BUICK CENTURY

NOTE: There are 2 ways to reset the Tire Pressure Monitor (TPM) system. After resetting, the TPM system requires up to 30 minutes of straight line driving in each of the 3 speed ranges to complete the calibration process. The speed ranges are as follows:

- 24-64 km/h (15-40 mph)
- 64-113 km/h (40-70 mph)
- 113-145 km/h (70-90 mph)

Using RESET button

1. Adjust all tire pressures to the recommended kPa/psi.
2. Turn ON the ignition, with the engine OFF.
3. Press and hold the red RESET button located in the passenger side instrument panel fuse block.
4. The LOW TIRE indicator will flash 3 times, then turn off.
5. Use the scan tool in order to clear the TPM DTC.

Using Scan Tool

1. Adjust all tire pressures to the recommended kPa/psi.
2. Install the scan tool.

2002 Chevrolet Camaro

GENERAL INFORMATION Service Reminder Indicators - General Motors (Except Cadillac)

3. Turn ON the ignition, with the engine OFF.
4. With the scan tool select Special Functions.
5. Select TIM Reset.
6. Press the Reset soft key.
7. The LOW TIRE indicator will flash 3 times, then turn OFF.
8. Use the scan tool in order to clear the TPM DTC.

2005 BUICK LESABRE & PARK AVENUE

NOTE: There are 2 ways to reset the tire pressure monitor (TPM) system. After resetting, the TPM system requires up to 30 minutes of straight line driving in each of the 3 speed ranges to complete the calibration process.

- 24-64 km/h (15-40 mph)
- 64-113 km/h (40-70 mph)
- 113-145 km/h (70-90 mph)

Using the DIC

1. Adjust all tire pressures to the recommended kPa/psi.
2. Turn ON the ignition, with the engine OFF.
3. Press the GAGE INFO button until TIRE PRESSURE is displayed.
4. Press and hold the RESET button until TIRE PRESSURE RESET is displayed.
5. Release the RESET button. The TIRE PRESSURE NORMAL message should be displayed on the DIC.
6. Clear the TPM DTC with a scan tool.

Using Scan Tool

1. Adjust all tire pressures to the recommended kPa/psi.
2. Turn ON the ignition, with the engine OFF.
3. Select Special Functions with the scan tool.
4. Select Tire Pressure Reset.
5. Press the Reset soft key. The TIRE PRESSURE NORMAL message should be displayed on the DIC.
6. Clear the TPM DTC with the scan tool.

2005-07 CHEVROLET AVALANCHE, SILVERADO, SUBURBAN & TAHOE

NOTE: When the wheels have been rotated or a tire pressure sensor has

been replaced, retrain tire pressure sensor.

1. Turn ignition switch to ON position, with engine off. Apply parking brake.

NOTE: If learn mode cannot be enabled, TPM system is not enabled in PDM/RCDLR. See appropriate manufacturer service information.

2. Turn headlight switch from OFF to parking lamps 4 times within 4 seconds. A double horn chirp will sound and the low tire pressure indicator will begin to flash to indicate the learn mode has been enabled (the low tire pressure indicator should continue flashing throughout the matching procedure, and "SERVICE TIRE MONITOR" message will be displayed on the DIC).

WARNING: Overinflating tires may cause personal injury or damage to the tires and wheels. When increasing tire pressure, do not exceed the maximum inflation pressure as noted on the tire sidewall.

NOTE: If a horn chirp does not sound after 35 seconds for any of the 4 sensors, turn ignition switch to OFF position to exit the learn mode. Repeat procedure from step 1.

3. Starting with left front tire, increase or decrease the pressure for 8-10 seconds, or until a horn chirp sounds. Horn chirp may occur before the 8-10 second pressure increase/decrease time period has been reached, or up to 30 seconds after the 8-10 second pressure increase/decrease time period has been reached.
4. After horn chirp has sounded, proceed as in step 3 for the next 3 sensors in the following order: right front, right rear and left rear.
5. After left rear sensor has been learned, check to see if the low tire pressure indicator is still flashing. If it is, turn ignition switch to OFF position to exit relearn procedure. Adjust all tire pressures to specification. If the low tire pressure indicator is not flashing, repeat procedure from step 1.
6. On some models, the DIC may list all 4 of the tire pressures at 0 psi after tire pressure sensor relearn procedure has been performed (although PDM/RCDLR reads correct learn value of the tires). To complete the relearn procedure on these models, drive the vehicle at highway speeds for 5 minutes.

2005-07 CHEVROLET CORVETTE

NOTE: In the following procedure, a TPM Sensor Activation Tool (J-46079) must be used.

NOTE: If the tire pressure sensor or RCDLR is replaced, the TPM system needs to relearn tire pressure sensor IDs.

The TPM system will cancel the learn mode if more than 2 minutes have passed and no sensors have been learned, or if the RCDLR has been in learn mode for more than 5 minutes. If the learn mode is canceled before any IDs are learned, the RCDLR will remember all previously stored IDs and their locations. As soon as the first sensor ID is learned, all other IDs are erased from the RCDLR's memory.

1. Turn ignition switch to ACC position. Apply parking brake.
2. Simultaneously press the keyless entry transmitter's lock and unlock buttons until a horn chirp sounds, indicating the learn mode has been enabled.
3. Starting with left front tire, hold antenna of TPM Sensor Activation Tool (J-46079) against the tire sidewall close to the wheel rim at the valve stem location, then press and release the ACTIVATE button and wait for a horn chirp.
4. After horn chirp has sounded, proceed as in step 3 for the next 3 sensors in the following order: right front, right rear and left rear.
5. After left rear sensor has been learned, a double horn chirp will sound, indicating all 4 sensor IDs have been learned. Turn ignition switch to OFF position.

2005 CHEVROLET IMPALA & MONTE CARLO

NOTE: There are 3 different ways to reset the Tire Pressure Monitor (TPM) system. After resetting, the TPM system requires up to 30 minutes of straight line driving in each of the 3 speed ranges to complete the calibration process.

Using Exterior Lamp Switch

1. Adjust all tire pressures to the recommended kPa/psi.
2. Turn ON the ignition, with the engine OFF.
3. Cycle the exterior lamp switch from OFF to parking lamps 3 times within 5 seconds.
4. Use the scan tool in order to clear the TPM DTC.

Using RDS Radio, If Equipped

1. Adjust all tire pressures to the recommended kPa/psi.
2. Turn the ignition to ACC or ON, with the engine OFF.
3. Turn the radio OFF.
4. Press and hold the DISP button until SETTINGS is displayed.
5. Press the SEEK up or down arrows until TIRE MON is displayed.
6. Press the PREV or NEXT button to enter the sub-menu. RESET will be displayed.

2002 Chevrolet Camaro

GENERAL INFORMATION Service Reminder Indicators - General Motors (Except Cadillac)

7. Press the DISP button, A chime will sound and DONE will be displayed.
8. Scroll until EXIT is displayed.
9. Press the DISP button to exit the TPM reset mode. A chime will sound to verify exit.
10. Use the scan tool in order to clear the TPM DTC.

Using Scan Tool

1. Adjust all tire pressures to the recommended kPa/psi.
2. Install the scan tool.
3. Turn ON the ignition, with the engine OFF.
4. With the scan tool select Special Functions.
5. Select TIM Reset.
6. Press the Reset soft key.
7. Use the scan tool in order to clear the TPM DTC.

2005-06 GMC YUKON & YUKON XL

NOTE: When the wheels have been rotated or a tire pressure sensor has been replaced, retrain tire pressure sensor. See TIRE PRESSURE SENSOR RELEARN in appropriate manufacturer service information.

2005 PONTIAC AZTEK

NOTE: After resetting, the tire pressure monitor (TPM) system requires up to 8 km/h (5 miles) of flat, smooth road, straight line driving in each of the 4 speed ranges to complete the calibration process. The speed ranges are as follows:

- 24-64 km/h (15-40 mph)
- 64-113 km/h (40-70 mph)
- 113-145 km/h (70-90 mph)

Using the DIC

1. Set all tire pressures to the recommended kPa/psi.
2. Turn ON the ignition, with the engine OFF.
3. Press the MODE button until LOW TIRE PRESSURE HOLD SET TO RESET is displayed.
4. Press and hold the SET button until a chime sounds and TIRE PRESSURE RESET is displayed and a chime sounds 3 times.

2002 Chevrolet Camaro

GENERAL INFORMATION Service Reminder Indicators - General Motors (Except Cadillac)

5. Release the SET button and TIRE PRESSURE NORMAL is displayed.

2005-06 PONTIAC GRAND PRIX

Using Driver Information Center (DIC)

NOTE: After resetting, the tire pressure monitoring (TPM) system requires up to 8 km/h (5 miles) of flat, smooth road straight line driving in each of the 4 speed ranges to complete the calibration process.

1. Set all tire pressures to the recommended kPa/psi.
2. Turn ON the ignition, with the engine OFF.
3. Press the vehicle information button until TIRE INFLATION MONITOR SYSTEM PRESS (down/left arrow) SWITCH TO RESET is displayed.
4. If the system is being reset due to a low tire pressure condition, press and hold the down/left arrow button until TIRE INFLATION MONITOR SYSTEM HAS BEEN RESET is displayed. If the system is being reset due to a tire rotation, press and hold the down/left arrow button for 5 seconds.
5. Release the down/left arrow button and TIRE PRESSURE NORMAL is displayed.

2005-06 PONTIAC VIBE

NOTE: After resetting, the tire pressure monitoring (TPM) system requires 60 minutes or more of driving at a speed of 30 km/h (19 mph) or above to complete the calibration process to have full capability for detecting a tire pressure condition.

1. Adjust all tire pressures to the recommended kPa/psi.
2. Turn ON the ignition, with the engine OFF.
3. Press and hold the tire pressure warning reset switch until the tire pressure warning indicator blinks 3 times at one second intervals.
4. If the tire pressure warning indicator does not blink, repeat the procedure starting at step 2.
5. Drive the vehicle for 60 minutes or more at a speed of 30 km/h (19 mph).
6. Verify the system has initialized. Turn ON the ignition, with the engine OFF and observe the tire pressure warning indicator.
 - System Initialized: light on for 3 seconds.
 - System not initialized: light on for 4 seconds.

2006-07 BUICK LACROSSE

NOTE: When the wheels have been rotated, or a tire pressure sensor has been replaced, retrain tire pressure sensor.

WARNING: Stray signals from other TPM equipped vehicles just driving by can be inadvertently learned. If any random horn chirps are heard from the vehicle while performing the learn procedure, most likely a stray sensor has been learned and the procedure will need to be cancelled and repeated. Under these circumstances, performing the TPM Learn Procedure away from other vehicles would be highly recommended. In the event a particular sensor activation does not cause the horn to chirp, it may be necessary to rotate the wheel valve stem to a different position due to the sensor signal is being blocked by another component. Before proceeding with the steps below, verify the following: No other sensor learn procedure is being performed simultaneously within close proximity. Tire pressures are not being adjusted on another TPM equipped vehicle within close proximity. Park Brake and Headlamp Switch input parameters are functioning correctly.

1. Turn ON the ignition, with the engine OFF.
2. Apply the parking brake.
3. Initiate the TPM Learn Mode using one of the following procedures:
 - Using a scan tool, initiate the TPM Learn Mode. A double horn chirp will sound indicating the Learn Mode has been enabled. The left front turn signal will also be illuminated
 - On vehicles equipped with keyless entry, simultaneously press the keyless entry transmitters lock and unlock buttons until a double horn chirp sounds indicating the Learn Mode has been enabled. The left front turn signal will also be illuminated.
 - On vehicles not equipped with keyless entry, press and release the driver information center (DIC) INFO button until the RELEARN TIRE POSITIONS message appears on the DIC display. Press and hold the SET/RESET button until a double horn chirp sounds and the DIC displays a TIRE LEARNING ACTIVE message indicating the Learn Mode has been enabled. The left front turn signal will also be illuminated.
4. Starting with the left front tire, learn the tire pressure using one of the following methods:
 - **Method 1:** Hold the antenna of the tool against the tire sidewall close to the wheel rim at the valve stem location then press and release the activate button and wait

2002 Chevrolet Camaro

GENERAL INFORMATION Service Reminder Indicators - General Motors (Except Cadillac)

for a horn chirp.

- **Method 2:** Increase/decrease the tire pressure for 8-10 seconds then wait for a horn chirp. The horn chirp may occur before or up to 30 seconds after the 8-10 second pressure increase/decrease time period has been reached.

WARNING: Over inflating tires may cause personal injury or damage to the tires and wheels. When increasing tire pressure do not exceed the maximum inflation pressure as noted on the tire sidewall.

5. After the horn chirp has sounded, repeat step 4 for the remaining 3 sensors in the following order: Right front, Right rear, Left rear.
6. After the LR sensor has been learned, a horn chirp will sound indicating all sensors have been learned.
7. Turn OFF the ignition to exit the learn mode.
8. After the learn mode has been exited, adjust all tires to the recommended pressures.

2006-07 BUICK LUCERNE

NOTE: When a spare tire is mounted, a wheel is replaced or rotated, or tire pressure has been adjusted, TPM system will need to be recalibrated.

CAUTION: DO NOT recalibrate TPM system until all problems are fixed and tire pressure in all 4 tires has been adjusted. If recalibration is done when tire pressures are incorrect, TPM system will not work properly and may not set an alert when a tire pressure is low or high.

1. Turn ignition switch to OFF position.
2. Ensure all tire pressures are adjusted to the pressure recommended on tire pressure label.
3. Turn ignition switch to ON position, with engine off.
4. Press and hold the vehicle information button until DIC display reads "PRESS TO RESET TIRE SYSTEM".
5. Press and hold SET/RESET button for about 5 seconds. After 5 seconds, system will display "TIRE PRESSURE RESET".
6. System will now sound a chime 3 times, and DIC will display "TIRE PRESSURE NORMAL".

NOTE: If low tire pressure warning message is still set, TPM system

2002 Chevrolet Camaro

GENERAL INFORMATION Service Reminder Indicators - General Motors (Except Cadillac)

has not reset. Repeat procedure. If it does not work after two tries, refer to appropriate service information.

7. After resetting, the TPM system requires about 20-45 minutes of driving in each of the following speed ranges to complete the calibration process:
- 25-40 MPH (40-64 KM/H).
 - 40-60 MPH (65-96 KM/H).
 - 60-85 MPH (96-136 KM/H).

NOTE: Learning process does not need to be completed during a single trip.

2006-07 BUICK RAINIER

NOTE: When the wheels have been rotated, or a tire pressure sensor or EGM/LGM has been replaced, retrain tire pressure sensor.

NOTE: If this procedure is performed following replacement and reprogramming of the Liftgate Module (LGM), DIC may display a low tire pressure fault and all tire pressures read 0 psi. If this problem occurs, contact vehicle manufacturer for repair procedure.

The TPM system will cancel the learn mode if more than 2 minutes have passed and no sensors have been learned, or if the system has been in learn mode for more than 5 minutes. If the learn mode is canceled before any sensor has been learned, the EGM/LGM will remember all current sensor IDs and their locations. As soon as the first sensor ID code is learned, all other IDs are erased from the EGM/LGM's memory. On models that display the individual tire pressure on DIC, updated tire pressures will not be displayed until EGM/LGM receives 2 more valid transmissions from each sensor. After performing the procedure below, always test drive the vehicle above 25 mph for at least 2 minutes before viewing tire pressures on DIC.

NOTE: Before proceeding with the steps below, ensure that no other sensor learn procedure is being performed simultaneously, or that tire pressures are not being adjusted on a TPM equipped vehicle within close proximity.

NOTE: In the following procedure, a TPM Sensor Activation Tool (J-46079) may be used in place of increasing/decreasing pressures to enable sensor. To use, place activator antenna against the tire sidewall close to the wheel rim at the valve stem location, then

press and release the ACTIVATE button.

NOTE: If TPM Sensor Activation Tool (J-46079) is used, and vehicle is having trouble entering relearn mode, check batteries in activation tool. Low batteries may allow some functions to work, but not allow vehicle to perform learn function. When the internal battery is fresh (fully charged), the indicator is "full" or all dark. When the battery is depleted, the indicator shows "empty" or all light.

1. Turn ignition switch to ON position, with engine off. Apply parking brake.

NOTE: If learn mode cannot be enabled, TPM system is not enabled in EGM/LGM. See appropriate manufacturer service information.

2. Turn headlight switch from OFF to parking lamps 4 times within 4 seconds. A double horn chirp will sound and the low tire pressure indicator will begin to flash to indicate the learn mode has been enabled.

WARNING: Overinflating tires may cause personal injury or damage to the tires and wheels. When increasing tire pressure, do not exceed the maximum inflation pressure as noted on the tire sidewall.

3. Starting with left front tire, increase or decrease the pressure for 8-10 seconds, or until a horn chirp sounds. Horn chirp may occur before the 8-10 second pressure increase/decrease time period has been reached, or up to 30 seconds after the 8-10 second pressure increase/decrease time period has been reached.
4. After horn chirp has sounded, proceed as in step 3 for the next 3 sensors in the following order: right front, right rear and left rear.
5. After left rear sensor has been learned, turn ignition switch to OFF position. Adjust all tire pressures to specification.

2006-07 CHEVROLET COLORADO

NOTE: When the wheels have been rotated, or a tire pressure sensor has been replaced, retrain tire pressure sensor.

NOTE: Learn Mode Cancellation The learn mode will cancel if the ignition is cycled to OFF or if more than 2 minutes has elapsed for any sensor that has not been learned. If the learn mode is cancelled before the first sensor is learned, the original sensor IDs will be

maintained. If the learn mode is canceled for any reason after the first sensor is learned, all IDs are erased from the BCM memory and if equipped, the DIC will display dashes for tire pressures.

WARNING: Stray signals from other TPM equipped vehicles just driving by can be inadvertently learned. If any random horn chirps are heard from the vehicle while performing the learn procedure, most likely a stray sensor has been learned and the procedure will need to be cancelled and repeated. Under these circumstances, performing the TPM Learn Procedure away from other vehicles would be highly recommended. In the event a particular sensor activation does not cause the horn to chirp, it may be necessary to rotate the wheel valve stem to a different position due to the sensor signal is being blocked by another component. Before proceeding with the steps below, verify the following: No other sensor learn procedure is being performed simultaneously within close proximity. Tire pressures are not being adjusted on another TPM equipped vehicle within close proximity. Park Brake and Headlamp Switch input parameters are functioning correctly.

1. Turn ON the ignition, with the engine OFF.
2. Apply the parking brake.
3. Turn the exterior lamp switch from OFF to parking lamps 4 times within 4 seconds. A horn chirp will sound and the low tire pressure indicator will begin to flash indicating the learn mode has been enabled.
4. Starting with the left front tire, learn the tire pressure using one of the following methods: Method 1: Hold the antenna of the tool against the tire sidewall close to the wheel rim at the valve stem location then press and release the activate button and wait for a horn chirp. Method 2: Increase/decrease the tire pressure for 8-10 seconds then wait for a horn chirp. The horn chirp may occur before or up to 30 seconds after the 8-10 second pressure increase/decrease time period has been reached.

WARNING: Over inflating tires may cause personal injury or damage to the tires and wheels. When increasing tire pressure do not exceed the maximum inflation pressure as noted on the tire sidewall.

5. After the horn chirp has sounded, repeat step 4 for the remaining 3 sensors in the following order: Right front, Right rear, Left rear.

2002 Chevrolet Camaro

GENERAL INFORMATION Service Reminder Indicators - General Motors (Except Cadillac)

6. After the LR sensor has been learned, a horn chirp will sound indicating all sensors have been learned.
7. Turn OFF the ignition to exit the learn mode.
8. After the learn mode has been exited, adjust all tires to the recommended pressures.

2006-07 CHEVROLET EQUINOX

NOTE: When the wheels have been rotated, or a tire pressure sensor has been replaced, retrain tire pressure sensor.

NOTE: Learn Mode Cancellation: The learn mode will cancel if the ignition is cycled to OFF or if more than 2 minutes has elapsed for any sensor that has not been learned. If the learn mode is cancelled before the first sensor is learned, the original sensor IDs will be maintained. If the learn mode is canceled for any reason after the first sensor is learned, all IDs are erased from the BCM memory and if equipped, the DIC will display dashes for tire pressures.

WARNING: Stray signals from other TPM equipped vehicles just driving by can be inadvertently learned. If any random horn chirps are heard from the vehicle while performing the learn procedure, most likely a stray sensor has been learned and the procedure will need to be cancelled and repeated. Under these circumstances, performing the TPM Learn Procedure away from other vehicles would be highly recommended. In the event a particular sensor activation does not cause the horn to chirp, it may be necessary to rotate the wheel valve stem to a different position due to the sensor signal is being blocked by another component. Before proceeding with the steps below, verify the following: No other sensor learn procedure is being performed simultaneously within close proximity. Tire pressures are not being adjusted on another TPM equipped vehicle within close proximity. Park Brake and Headlamp Switch input parameters are functioning correctly.

1. Turn ON the ignition, with the engine OFF.
2. Apply the parking brake.
3. Turn the exterior lamp switch from OFF to parking lamps 4 times within 4 seconds. A horn chirp will sound and the low tire pressure indicator will begin to flash indicating

2002 Chevrolet Camaro

GENERAL INFORMATION Service Reminder Indicators - General Motors (Except Cadillac)

the learn mode has been enabled.

4. Starting with the left front tire, learn the tire pressure using one of the following methods:
 - **Method 1:** Hold the antenna of the tool against the tire sidewall close to the wheel rim at the valve stem location then press and release the activate button and wait for a horn chirp.
 - **Method 2:** Increase/decrease the tire pressure for 8-10 seconds then wait for a horn chirp. The horn chirp may occur before or up to 30 seconds after the 8-10 second pressure increase/decrease time period has been reached.

WARNING: Over inflating tires may cause personal injury or damage to the tires and wheels. When increasing tire pressure do not exceed the maximum inflation pressure as noted on the tire sidewall.

5. After the horn chirp has sounded, repeat step 4 for the remaining 3 sensors in the following order: Right front, Right rear, Left rear.
6. After the LR sensor has been learned, a horn chirp will sound indicating all sensors have been learned.
7. Turn OFF the ignition to exit the learn mode.
8. After the learn mode has been exited, adjust all tires to the recommended pressures.

2006-07 CHEVROLET IMPALA & MONTE CARLO

NOTE: If a tire pressure sensor or the RCDLR is replaced, or if wheels have been rotated, tire pressure sensor must be retrained.

The TPM system will cancel the learn mode if more then 2 minutes have passed and no sensors have been learned, or if the RCDLR has been in learn mode for more than 5 minutes. If the learn mode is canceled before any IDs are learned, the RCDLR will remember all previously stored IDs and their locations. As soon as the first sensor ID is learned, all other IDs are erased from the RCDLR's memory.

NOTE: Before proceeding with the steps below, ensure that no other sensor learn procedure is being performed simultaneously, or that no tire pressures are being adjusted on another TPM equipped vehicle within close proximity.

NOTE: In the following procedures, a TPM Sensor Activation Tool (J-46079) may be used in place of increasing/decreasing pressures to enable sensor. To use, place activator antenna against the tire sidewall close to the wheel rim at the valve stem location, then

press and release the ACTIVATE button.

NOTE: If TPM Sensor Activation Tool (J-46079) is used, and vehicle is having trouble entering relearn mode, check batteries in activation tool. Low batteries may allow some functions to work, but not allow vehicle to perform learn function. When the internal battery is fresh (fully charged), the indicator is "full" or is all dark. When the battery is depleted, the indicator shows "empty" or is all light.

Relearn Procedure Using Keyless Entry System

1. Turn ignition switch to ACC position. Apply parking brake.
2. Simultaneously press the keyless entry transmitter's lock and unlock buttons until a horn chirp sounds, indicating the learn mode has been enabled.

WARNING: Overinflating tires may cause personal injury or damage to the tires and wheels. When increasing tire pressure, DO NOT exceed the maximum inflation pressure as noted on the tire sidewall.

3. Starting with left front tire, increase or decrease the pressure for 5-8 seconds, or until a horn chirp sounds. The horn chirp may occur before the 5-8 second pressure increase/decrease time period has been reached, or up to 30 seconds after the 5-8 second pressure increase/decrease time period has been reached.
4. After horn chirp has sounded, proceed as in step 3 for the next 3 sensors in the following order: right front, right rear and left rear.
5. After left rear sensor has been learned, a double horn chirp will sound, indicating all 4 sensor IDs have been learned. Turn ignition switch to OFF position. Adjust all tire pressures to specification.

Relearn Procedure Using Scan Tool

NOTE: Before proceeding with the steps below, ensure that no other sensor learn procedure is being performed simultaneously, or that no tire pressures are being adjusted on another TPM equipped vehicle within close proximity.

1. Connect scan tool. Turn ignition switch to ACC position. Apply parking brake.
2. Using scan tool, select "SPECIAL FUNCTIONS".
3. Select "SENSOR LEARN MODE ENABLE", and press ENTER key.
4. Press ON soft key. A horn chirp will sound, indicating the learn mode has been enabled.

WARNING: Overinflating tires may cause personal injury or damage to the tires and wheels. When increasing tire pressure, DO NOT exceed the maximum inflation pressure as noted on the tire sidewall.

5. Starting with left front tire, increase or decrease pressure for 5-8 seconds, or until a horn chirp sounds. The horn chirp may occur before the 5-8 second pressure increase/decrease time period has been reached, or up to 30 seconds after the 5-8 second pressure increase/decrease time period has been reached.
6. After horn chirp has sounded, proceed as in step 5 for the next 3 sensors in the following order: right front, right rear and left rear.
7. After left rear sensor has been learned, a double horn chirp will sound, indicating all 4 sensor IDs have been learned. Turn ignition switch to OFF position. Adjust all tire pressures to specification.

2006-07 CHEVROLET TRAILBLAZER

NOTE: When the wheels have been rotated, or a tire pressure sensor or EGM/LGM has been replaced, retrain tire pressure sensor.

NOTE: If this procedure is performed following replacement and reprogramming of the Liftgate Module (LGM), DIC may display a low tire pressure fault and all tire pressures read 0 psi. If this problem occurs, contact vehicle manufacturer for repair procedure.

The TPM system will cancel the learn mode if more than 2 minutes have passed and no sensors have been learned, or if the system has been in learn mode for more than 5 minutes. If the learn mode is canceled before any sensor has been learned, the EGM/LGM will remember all current sensor IDs and their locations. As soon as the first sensor ID code is learned, all other IDs are erased from the EGM/LGM's memory. On models that display the individual tire pressure on DIC, updated tire pressures will not be displayed until EGM/LGM receives 2 more valid transmissions from each sensor. After performing the procedure below, always test drive the vehicle above 25 mph for at least 2 minutes before viewing tire pressures on DIC.

NOTE: Before proceeding with the steps below, ensure that no other sensor learn procedure is being performed simultaneously, or that tire pressures are not being adjusted on a TPM equipped vehicle within close proximity.

NOTE: In the following procedure, a TPM Sensor Activation Tool (J-46079) may be used in place of increasing/decreasing pressures

to enable sensor. To use, place activator antenna against the tire sidewall close to the wheel rim at the valve stem location, then press and release the ACTIVATE button.

NOTE: If TPM Sensor Activation Tool (J-46079) is used, and vehicle is having trouble entering relearn mode, check batteries in activation tool. Low batteries may allow some functions to work, but not allow vehicle to perform learn function. When the internal battery is fresh (fully charged), the indicator is "full" or all dark. When the battery is depleted, the indicator shows "empty" or all light.

1. Turn ignition switch to ON position, with engine off. Apply parking brake.

NOTE: If learn mode cannot be enabled, TPM system is not enabled in EGM/LGM. See appropriate manufacturer service information.

2. Turn headlight switch from OFF to parking lamps 4 times within 4 seconds. A double horn chirp will sound and the low tire pressure indicator will begin to flash to indicate the learn mode has been enabled.

WARNING: Overinflating tires may cause personal injury or damage to the tires and wheels. When increasing tire pressure, do not exceed the maximum inflation pressure as noted on the tire sidewall.

3. Starting with left front tire, increase or decrease the pressure for 8-10 seconds, or until a horn chirp sounds. Horn chirp may occur before the 8-10 second pressure increase/decrease time period has been reached, or up to 30 seconds after the 8-10 second pressure increase/decrease time period has been reached.
4. After horn chirp has sounded, proceed as in step 3 for the next 3 sensors in the following order: right front, right rear and left rear.
5. After left rear sensor has been learned, turn ignition switch to OFF position to exit the learn mode. Adjust all tire pressures to specification.

2006-07 GMC CANYON

NOTE: When the wheels have been rotated, or a tire pressure sensor has been replaced, retrain tire pressure sensor.

NOTE: Learn Mode Cancellation The learn mode will cancel if the ignition is cycled to OFF or if more than 2 minutes has elapsed for any

sensor that has not been learned. If the learn mode is cancelled before the first sensor is learned, the original sensor IDs will be maintained. If the learn mode is canceled for any reason after the first sensor is learned, all IDs are erased from the BCM memory and if equipped, the DIC will display dashes for tire pressures.

WARNING: Stray signals from other TPM equipped vehicles just driving by can be inadvertently learned. If any random horn chirps are heard from the vehicle while performing the learn procedure, most likely a stray sensor has been learned and the procedure will need to be cancelled and repeated. Under these circumstances, performing the TPM Learn Procedure away from other vehicles would be highly recommended. In the event a particular sensor activation does not cause the horn to chirp, it may be necessary to rotate the wheel valve stem to a different position due to the sensor signal is being blocked by another component. Before proceeding with the steps below, verify the following: No other sensor learn procedure is being performed simultaneously within close proximity. Tire pressures are not being adjusted on another TPM equipped vehicle within close proximity. Park Brake and Headlamp Switch input parameters are functioning correctly.

1. Turn ON the ignition, with the engine OFF.
2. Apply the parking brake.
3. Turn the exterior lamp switch from OFF to parking lamps 4 times within 4 seconds. A horn chirp will sound and the low tire pressure indicator will begin to flash indicating the learn mode has been enabled.
4. Starting with the left front tire, learn the tire pressure using one of the following methods: Method 1: Hold the antenna of the tool against the tire sidewall close to the wheel rim at the valve stem location then press and release the activate button and wait for a horn chirp. Method 2: Increase/decrease the tire pressure for 8-10 seconds then wait for a horn chirp. The horn chirp may occur before or up to 30 seconds after the 8-10 second pressure increase/decrease time period has been reached.

WARNING: Over inflating tires may cause personal injury or damage to the tires and wheels. When increasing tire pressure do not exceed the maximum inflation pressure as noted on the tire sidewall.

5. After the horn chirp has sounded, repeat step 4 for the remaining 3 sensors in the

2002 Chevrolet Camaro

GENERAL INFORMATION Service Reminder Indicators - General Motors (Except Cadillac)

following order: Right front, Right rear, Left rear.

6. After the LR sensor has been learned, a horn chirp will sound indicating all sensors have been learned.
7. Turn OFF the ignition to exit the learn mode.
8. After the learn mode has been exited, adjust all tires to the recommended pressures.

2006-07 GMC ENVOY

NOTE: When the wheels have been rotated, or a tire pressure sensor or EGM/LGM has been replaced, retrain tire pressure sensor.

NOTE: If this procedure is performed following replacement and reprogramming of the Liftgate Module (LGM), DIC may display a low tire pressure fault and all tire pressures read 0 psi. If this problem occurs, contact vehicle manufacturer for repair procedure.

The TPM system will cancel the learn mode if more than 2 minutes have passed and no sensors have been learned, or if the system has been in learn mode for more than 5 minutes. If the learn mode is canceled before any sensor has been learned, the EGM/LGM will remember all current sensor IDs and their locations. As soon as the first sensor ID code is learned, all other IDs are erased from the EGM/LGM's memory. On models that display the individual tire pressure on DIC, updated tire pressures will not be displayed until EGM/LGM receives 2 more valid transmissions from each sensor. After performing the procedure below, always test drive the vehicle above 25 mph for at least 2 minutes before viewing tire pressures on DIC.

NOTE: Before proceeding with the steps below, ensure that no other sensor learn procedure is being performed simultaneously, or that tire pressures are not being adjusted on a TPM equipped vehicle within close proximity.

NOTE: In the following procedure, a TPM Sensor Activation Tool (J-46079) may be used in place of increasing/decreasing pressures to enable sensor. To use, place activator antenna against the tire sidewall close to the wheel rim at the valve stem location, then press and release the **ACTIVATE** button.

NOTE: If TPM Sensor Activation Tool (J-46079) is used, and vehicle is having trouble entering relearn mode, check batteries in activation tool. Low batteries may allow some functions to work, but not allow vehicle to perform learn function. When the internal

2002 Chevrolet Camaro

GENERAL INFORMATION Service Reminder Indicators - General Motors (Except Cadillac)

battery is fresh (fully charged), the indicator is "full" or all dark. When the battery is depleted, the indicator shows "empty" or all light.

1. Turn ignition switch to ON position, with engine off. Apply parking brake.

NOTE: If learn mode cannot be enabled, TPM system is not enabled in EGM/LGM. See appropriate manufacturer service information.

2. Turn headlight switch from OFF to parking lamps 4 times within 4 seconds. A double horn chirp will sound and the low tire pressure indicator will begin to flash to indicate the learn mode has been enabled.

WARNING: Overinflating tires may cause personal injury or damage to the tires and wheels. When increasing tire pressure, do not exceed the maximum inflation pressure as noted on the tire sidewall.

3. Starting with left front tire, increase or decrease the pressure for 8-10 seconds, or until a horn chirp sounds. Horn chirp may occur before the 8-10 second pressure increase/decrease time period has been reached, or up to 30 seconds after the 8-10 second pressure increase/decrease time period has been reached.
4. After horn chirp has sounded, proceed as in step 3 for the next 3 sensors in the following order: right front, right rear and left rear.
5. After left rear sensor has been learned, turn ignition switch to OFF position. Adjust all tire pressures to specification.

2006-07 PONTIAC TORRENT

NOTE: When the wheels have been rotated, or a tire pressure sensor has been replaced, retrain tire pressure sensor.

NOTE: Learn Mode Cancellation The learn mode will cancel if the ignition is cycled to OFF or if more than 2 minutes has elapsed for any sensor that has not been learned. If the learn mode is cancelled before the first sensor is learned, the original sensor IDs will be maintained. If the learn mode is canceled for any reason after the first sensor is learned, all IDs are erased from the BCM memory and if equipped, the DIC will display dashes for tire pressures.

WARNING: Stray signals from other TPM equipped vehicles just driving by can be inadvertently learned. If any random horn

chirps are heard from the vehicle while performing the learn procedure, most likely a stray sensor has been learned and the procedure will need to be cancelled and repeated. Under these circumstances, performing the TPM Learn Procedure away from other vehicles would be highly recommended. In the event a particular sensor activation does not cause the horn to chirp, it may be necessary to rotate the wheel valve stem to a different position due to the sensor signal is being blocked by another component. Before proceeding with the steps below, verify the following: No other sensor learn procedure is being performed simultaneously within close proximity. Tire pressures are not being adjusted on another TPM equipped vehicle within close proximity. Park Brake and Headlamp Switch input parameters are functioning correctly.

1. Turn ON the ignition, with the engine OFF.
2. Apply the parking brake.
3. Turn the exterior lamp switch from OFF to parking lamps 4 times within 4 seconds. A horn chirp will sound and the low tire pressure indicator will begin to flash indicating the learn mode has been enabled.
4. Starting with the left front tire, learn the tire pressure using one of the following methods:
 - **Method 1:** Hold the antenna of the tool against the tire sidewall close to the wheel rim at the valve stem location then press and release the activate button and wait for a horn chirp.
 - **Method 2:** Increase/decrease the tire pressure for 8-10 seconds then wait for a horn chirp. The horn chirp may occur before or up to 30 seconds after the 8-10 second pressure increase/decrease time period has been reached.

WARNING: Over inflating tires may cause personal injury or damage to the tires and wheels. When increasing tire pressure do not exceed the maximum inflation pressure as noted on the tire sidewall.

5. After the horn chirp has sounded, repeat step 4 for the remaining 3 sensors in the following order: Right front, Right rear, Left rear.
6. After the LR sensor has been learned, a horn chirp will sound indicating all sensors have been learned.
7. Turn OFF the ignition to exit the learn mode.
8. After the learn mode has been exited, adjust all tires to the recommended pressures.